

**Price list** 01/2022**Hensel Electric India Pvt. Ltd.**

Industrial Electrical Power Distribution Systems

35, Kunnam Village
Sunguvarchathram - Walajabad Road
Sriperumbudur 631 604
Kanchipuram Dist., Tamil Nadu
INDIA

Tel: +91 44 6712 7700
Fax: +91 44 6712 7724
Email: info@hensel-electric.in
Web: www.hensel.in

w.e.f. April 15, 2022

Sl.No.	Cable Size	Box Dimensions (LxBxH) (mm)	Packing Quantity (Nos.)	Catalog No. without terminals	Price ₹/- Each	Catalog No. with terminals	Price ₹/- Each
--------	------------	-----------------------------	-------------------------	-------------------------------	----------------	----------------------------	----------------

Cable Junction Boxes IP 55 with integrated membranes for cable entry

1.	2.5 sq.mm	88 x 88 x 47	5	DE 9320	310.00	DE 9325	475.00
2.	4 sq.mm	98 x 98 x 52	5	DE 9340	360.00	DE 9345	505.00

Cable Junction Boxes IP 66 with integrated membranes / metric knockouts for cable entry

1.	1.5-2.5 sq.mm	93 x 93 x 62	5	DK 0200 G	335.00	DK 0202 G	480.00
2.	1.5-2.5 sq.mm	104 x 104 x 70	5			DK 0402 G	515.00
3.	1.5-4 sq.mm	104 x 104 x 70	5	DK 0400 G	445.00	DK 0404 G	575.00
4.	1.5-4 sq.mm	130 x 130 x 77	5			DK 0604 G	915.00
5.	2.5-6 sq.mm	130 x 130 x 77	5	DK 0600 G	815.00	DK 0606 G	1105.00
6.	2.5-6 sq.mm	130 x 180 x 77	5			DK 1006 G	1280.00
7.	4-10 sq.mm	130 x 180 x 77	5	DK 1000 G	855.00	DK 1010 G	1445.00
8.	4-10 sq.mm	155 x 210 x 92	2			DK 1610 G	2225.00
9.	10-16 sq.mm	155 x 210 x 92	2	DK 1600 G	1565.00	DK 1616 G	2585.00
10.	10-25 sq.mm	205 x 255 x 112	2	DK 2500 G	2380.00	DK 2525 G	3840.00
11.	16-35 sq.mm	225 x 295 x 122	1	DK 3500 G	3305.00	DK 3535 G	13495.00
12.	16-50 sq.mm	255 x 355 x 122	1	DK 5000 G	4070.00	DK 5054 G	12015.00
13.	16-50 sq.mm	255 x 355 x 122	1			DK 5055 G	14050.00

Cable Junction Boxes IP66 with integrated membranes for cable entry Black

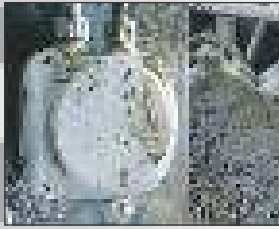
1.	1.5-2.5 sq.mm	93 x 93 x 62	5	DK 0200 B	335.00	DK 0202 B	480.00
2.	1.5-4 sq.mm	104 x 104 x 70	5	DK 0400 B	445.00	DK 0404 B	575.00
3.	2.5-6 sq.mm	130 x 130 X 77	5	DK 0600 B	815.00	DK 0606 B	1105.00
4.	4-10 sq.mm	130 x 180 x 77	5	DK 1000 B	855.00	DK 1010 B	1445.00

Cable Junction Boxes IP 65 with metric knockouts for cable entry

1.	50/70 sq.mm	300 x 450 x 170	1			K 7004 (4 terminals)	13285.00
2.	50/70 sq.mm	300 x 450 x 170	1			K 7005 (5 terminals)	15060.00
3.	150 sq.mm	300 x 450 x 170	1			K 1204 (4 terminals)	35415.00
4.	150 sq.mm	300 x 450 x 170	1			K 1205 (5 terminals)	39370.00
5.	240 sq.mm	300 x 600 x 170	1			K 2404 (4 terminals)	45260.00
6.	240 sq.mm	300 x 600 x 170	1			K 2405 (5 terminals)	53320.00

Cable Junction Boxes IP 66/67 with PE Inlay

Sl.No.	Cable Size	Box Dimensions (LxBxH) (mm)	Packing Quantity (Nos.)	with elastic membranes IP 66	Price ₹/- Each	with metric knockouts IP66/67	Price ₹/- Each
1.	0.7-2.5 sq.mm	93 x 93 x 62	5	DK 0202 U	990.00	KF 0202 U	990.00
2.	0.7-2.5 sq.mm	93 x 93 x 62	5	DK 0200 U	705.00	KF 0200 U	950.00
3.	1.5-4 sq.mm	130 x 130 X 77	5	DK 0604 U	1290.00	KF 0604 U	1290.00
4.	1.5-4 sq.mm	130 x 130 x 77	5	DK 0600 U	1035.00	KF 0600 U	1400.00
5.	0.75 - 2.5 sq.mm	93 x 93 x 62	5	DK 0202 V	990.00	KF 0202 V	990.00
6.	0.75 - 2.5 sq.mm	93 x 93 x 62	5	DK 0200 V	705.00	KF 0200 V	950.00
7.	1.5-4 sq.mm	130 x 130 X 77	5	DK 0604 V	1290.00	KF 0604 V	1290.00
8.	1.5-4 sq.mm	130 x 130 X 77	5	DK 0600 V	1035.00	KF 0600 V	1400.00



Sl.No.	Cable Size	Box Dimensions (LxBxH) (mm)	Packing Quantity (Nos.)	Catalog No. without terminals	Price ₹/- Each	Catalog No. with terminals	Price ₹/- Each
--------	------------	-----------------------------	-------------------------	-------------------------------	----------------	----------------------------	----------------

Cable Junction Boxes IP 66/69 “weather proof”, for outdoor installation (with knockouts for cable entry)



1.	1.5-2.5 sq.mm	93 x 93 x 62	5	KF 0200 G	470.00	KF 0202 G	685.00
2.	1.5-2.5 sq.mm	104 x 104 x 70	5			KF 0402 G	815.00
3.	1.5-4 sq.mm	104 x 104 x 70	5	KF 0400 G	555.00	KF 0404 G	850.00
4.	1.5-4 sq.mm	130 x 130 x 77	5			KF 0604 G	1110.00
5.	2.5-6 sq.mm	130 x 130 x 77	5	KF 0600 G	1060.00	KF 0606 G	1540.00
6.	2.5-6 sq.mm	130 x 180 x 77	5			KF 1006 G	1800.00
7.	4-10 sq.mm	130 x 180 x 77	5	KF 1000 G	1230.00	KF 1010 G	1975.00
8.	4-10 sq.mm	155 x 210 x 92	2			KF 1610 G	2300.00
9.	10-16 sq.mm	155 x 210 x 92	2	KF 1600 G	1665.00	KF 1616 G	2570.00
10.	10-25 sq.mm	205 x 255 x 112	2	KF 2500 G	2630.00	KF 2525 G	4045.00
11.	16-35 sq.mm	225 x 295 x 122	1	KF 3500 G	3145.00	KF 3535 G	13815.00
12.	16-50 sq.mm	255 x 355 x 122	1	KF 5000 G	4970.00	KF 5050 G	14515.00

Cable Junction Boxes IP 66/69 “weather proof”, for outdoor installation (with knockouts for cable entry - Black colour)



1.	1.5-2.5 sq.mm	93 x 93 x 62	5	KF 0200 B	470.00	KF 0202 B	685.00
2.	1.5-2.5 sq.mm	104 x 104 x 70	5			KF 0402 B	815.00
3.	1.5-4 sq.mm	104 x 104 x 70	5	KF 0400 B	555.00	KF 0404 B	850.00
4.	1.5-4 sq.mm	130 x 130 x 77	5			KF 0604 B	1110.00
5.	2.5-6 sq.mm	130 x 130 x 77	5	KF 0600 B	1060.00	KF 0606 B	1540.00
6.	2.5-6 sq.mm	130 x 180 x 77	5			KF 1006 B	1800.00
7.	4-10 sq.mm	130 x 180 x 77	5	KF 1000 B	1230.00	KF 1010 B	1975.00
8.	4-10 sq.mm	155 x 210 x 92	2			KF 1610 B	2300.00
9.	10-16 sq.mm	155 x 210 x 92	2	KF 1600 B	1665.00	KF 1616 B	2570.00
10.	10-25 sq.mm	205 x 255 x 112	2	KF 2500 B	2630.00	KF 2525 B	4045.00
11.	16-35 sq.mm	225 x 295 x 122	1	KF 3500 B	3145.00	KF 3535 B	13815.00
12.	16-50 sq.mm	255 x 355 x 122	1	KF 5000 B	4970.00	KF 5050 B	14515.00

Cable Junction Boxes IP 66/69 “weather proof”, for outdoor installation (with plain walls - Grey colour)

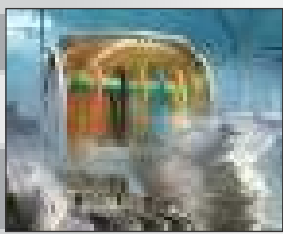


1.	1.5-2.5 sq.mm	93 x 93 x 62	5	KF 0200 H	415.00		
2.	1.5-4 sq.mm	104 x 104 x 70	5	KF 0400 H	505.00		
3.	2.5-6 sq.mm	130 x 130 x 77	5	KF 0600 H	865.00		
4.	4-10 sq.mm	130 x 180 x 77	5	KF 1000 H	1110.00		
5.	10-16 sq.mm	155 x 210 x 92	2	KF 1600 H	1505.00		
6.	10-25 sq.mm	205 x 255 x 112	2	KF 2500 H	2630.00		
7.	16-35 sq.mm	225 x 295 x 122	1	KF 3500 H	3175.00		
8.	16-50 sq.mm	255 x 355 x 122	1	KF 5000 H	4970.00		

Cable Junction Boxes IP 66/69 “weather proof”, for outdoor installation (with plain walls - Black colour)



1.	1.5-2.5 sq.mm	93 x 93 x 62	5	KF 0200 C	415.00		
2.	1.5-4 sq.mm	104 x 104 x 70	5	KF 0400 C	505.00		
3.	2.5-6 sq.mm	130 x 130 x 77	5	KF 0600 C	865.00		
4.	4-10 sq.mm	130 x 180 x 77	5	KF 1000 C	1110.00		
5.	10-16 sq.mm	155 x 210 x 92	2	KF 1600 C	1505.00		
6.	10-25 sq.mm	205 x 255 x 112	2	KF 2500 C	2630.00		
7.	16-35 sq.mm	225 x 295 x 122	1	KF 3500 C	3175.00		
8.	16-50 sq.mm	255 x 355 x 122	1	KF 5000 C	4970.00		



Sl.No.	Cable Size	Box Dimensions (LxBxH) (mm)	Packing Quantity (Nos.)	Catalog No. (Grey)	Price ₹/- Each	Catalog No. (Black)	Price ₹/- Each
--------	------------	-----------------------------	-------------------------	--------------------	----------------	---------------------	----------------

Cable Junction Boxes (Grey & Black) IP 68 “Water proof”, for Encapsulating



1.	1.5-2.5 sq.mm	93 x 93 x 62	5	WP 0202 G	4855.00	WP 0202 B	4855.00
2.	1.5-2.5 sq.mm	104 x 104 x 70	5	WP 0402 G	5835.00	WP 0402 B	5835.00
3.	1.5-4 sq.mm	104 x 104 x 70	5	WP 0404 G	5885.00	WP 0404 B	5885.00
4.	1.5-4 sq.mm	130 x 130 x 77	5	WP 0604 G	7555.00	WP 0604 B	7555.00
5.	2.5-6 sq.mm	130 x 130 x 77	5	WP 0606 G	7785.00	WP 0606 B	7785.00
6.	2.5-6 sq.mm	130 x 180 x 77	5	WP 1006 G	9265.00	WP 1006 B	9265.00
7.	4-10 sq.mm	130 x 180 x 77	5	WP 1010 G	9880.00	WP 1010 B	9880.00

ISO-FILL BRW Two component gel



1.	Set sealing compound 350 ml		1	GH 0350	4395.00		
2.	Set sealing compound 500 ml		1	GH 0500	5290.00		
3.	Set sealing compound 850 ml		1	GH 0850	7020.00		
4.	Set sealing compound 1200 ml		1	GH 1200	8105.00		
5.	Set sealing compound 2000 ml		1	GHL 2000	6930.00		
6.	Set sealing compound 5000 ml		1	GHL 5000	15660.00		
6.	Set sealing compound 10000 ml		1	GHL 10000	30615.00		

Cable Junction Boxes IP 55 for “Functional integrity” - (Communication Box E30)



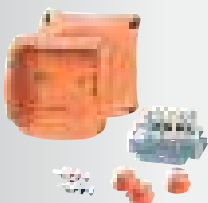
1.		255 x 255 x 155	1			FK 5000	Price on request
----	--	-----------------	---	--	--	---------	------------------

Cable Junction Boxes IP 65 for “Functional integrity” - (Orange colour - Stainless steel)



1.	16 - 50 sq.mm	262 x 513 x 130	1			FK 6505	Price on request
----	---------------	-----------------	---	--	--	---------	------------------

Cable Junction Boxes IP 66 for “Functional integrity” - (Orange colour - polycarbonate)

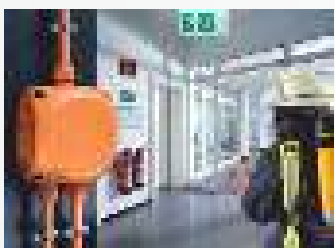
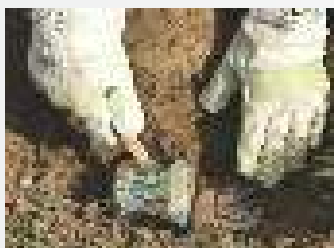
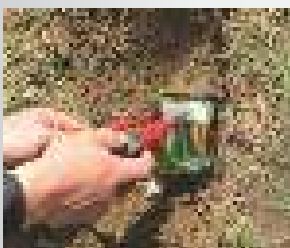


1.	1.5 - 2.5 sq.mm	104 x 104 x 70	1			FK 0402	Price on request
2.	1.5 - 4 sq.mm	104 x 104 x 70	1			FK 0404	Price on request
3.	1.5 - 6 sq.mm	130 x 130 x 77	1			FK 0604	Price on request
4.	1.5 - 6 sq.mm	130 x 130 x 77	1			FK 0606	Price on request
5.	1.5 - 6 sq.mm	210 x 155 x 92	1			FK 1606	Price on request
6.	1.5 - 10 sq.mm	210 x 155 x 92	1			FK 1610	Price on request
7.	1.5 - 16 sq.mm	210 x 155 x 92	1			FK 1616	Price on request

Cable Junction Boxes IP 66 for “Functional integrity” - (Orange colour - Sheet steel)



1.	0.5 - 4 sq.mm	150 x 150 x 89	1			FK 9025	Price on request
2.	1.5 - 10 sq.mm	200 x 150 x 89	1			FK 9105	Price on request
3.	1.5 - 16 sq.mm	200 x 200 x 89	1			FK 9255	Price on request
4.	1.5 - 10 sq.mm	200 x 200 x 89	1			FK 9259	Price on request



NEW

Isolator boxes IP 65 / 66





Catalog No.	Cable Entry	Sealing Range (mm dia)	Packing Quantity (Nos.)	Price ₹/- Each
-------------	-------------	------------------------	-------------------------	----------------

Stepped Glands IP 54



STM 16	M 16	3.5 - 12	50	24.00
STM 20	M 20	5 - 16	20	33.00
STM 25	M 25	5 - 21	20	42.00
STM 32	M 32	13 - 26.5	10	45.00
STM 40	M 40	13 - 34	5	72.00

Grommets IP 55



ESM 16	M 16	4.5 - 11	50	30.00
ESM 20	M 20	6 - 13	20	30.00
ESM 25	M 25	9 - 17	20	30.00
ESM 32	M 32	9 - 23	10	39.00
ESM 40	M 40	17 - 30	5	82.00

Grommets IP 65



EDK 16	M 16	5 - 10	50	36.00
EDK 20	M 20	6 - 13	20	33.00
EDK 25	M 25	9 - 17	20	51.00
EDK 32	M 32	12 - 23	10	72.00
EDK 40	M 40	17 - 30	5	125.00

Grommets IP 65 for conduits



EDR 16	M 16	M 16	50	39.00
EDR 20	M 20	M 20	20	45.00
EDR 25	M 25	M 25	20	57.00
EDR 32	M 32	M 32	10	116.00
EDR 40	M 40	M 40	5	229.00

Insulated Cable Glands for Armoured Cables IP 66 / 67 / 68 for corrosive and wet locations



GSC 20	M 20	11.5-16 mm	10	735.00
GSC 21	M 20	14.5-20.5 mm	10	750.00
GSC 25	M 25	20.5-26.5 mm	5	1150.00
GSC 32	M 32	26.5-33.5 mm	5	1650.00

Earth Tag



ET 20	M 20		10	46.00
ET 25	M 25		10	63.00
ET 32	M 32		10	107.00

Ventilation Devices



28405.0-00	Pressure compensation element DA 284 - IP 66 - M40	2	1315.00
28406.0-00	Pressure compensation element DA 284 - IP 67 - M12	2	615.00
28410.0-00	Ventilation gland DAK 284 - M12	1	510.00
28411.0-00	Ventilation gland DAK 284 - M 16	1	530.00
28412.0-00	Ventilation gland DAK 284 - M 20	1	605.00
08410.0-00	Drainage Device DD 084	1	1205.00

Dew Guard



HDG 050	Size 1	50 X 75 mm	10	285.00
HDG 075	Size 2	75 X 100 mm	10	530.00
HDG 100	Size 3	100 X 150 mm	5	1015.00
HDG 150	Size 4	150 X 150 mm	2	1505.00



Sl.No.	Description	Box Dimensions (LxBxH) (mm)	Packing Quantity (Nos.)	TRANSPARENT LID Catalog No.	Price ₹/- Each	OPAQUE LID Catalog No.	Price ₹ /- Each
--------	-------------	-----------------------------	-------------------------	-----------------------------	----------------	------------------------	-----------------



Enystar Empty Enclosures

1.	Size 1 box	276 x 186 x 186	1	FP 0101	5740.00	FP 0121	5755.00
2.	Size 2 box	276 x 366 x 186	1	FP 0211	7465.00	FP 0231	7405.00
3.	Size 3 box	276 x 546 x 186	1	FP 0311	9885.00	FP 0331	9885.00
4.	Size 4 box	366 x 546 x 186	1	FP 0411	10945.00	FP 0431	11090.00



Enystar Circuit Breaker Boxes

1.	Size 1 box	276 x 186 x 186	1	FP 1108	13160.00		
2.	Size 2 box	276 x 366 x 186	1	FP 1218	18875.00		
3.	Size 3 box	276 x 546 x 186	1	FP 1318	30075.00		
4.	Size 4 box	366 x 546 x 186	1	FP 1418	35785.00		

ENYSTAR Modular VTPN Distribution Board System up to 250 A IP 66

Combinable enclosure system for self-assembly of distribution boards, intended to be operated by ordinary persons according to IEC 61439-3

Protection Class 1, Earthed.

Available in 4 way, 8 way, 12 way, 16 way versions





ENYBOARD SMALL TYPE DISTRIBUTION BOARDS



Sl.No.	Description	Box Dimensions (LxBxH) (mm)	Packing Quantity (Nos.)	Catalog No. with PE + N terminals	Price ₹/- Each	Catalog No. without PE + N terminals	Price ₹/- Each
--------	-------------	-----------------------------	-------------------------	-----------------------------------	----------------	--------------------------------------	----------------

KV Thermoplastic Circuit Breaker Boxes IP 65 (with metric knockouts for cable entry)

1.	1 row 3 modules	102 x 197 x 92	1	KV 7103	1875.00	KV 6103	1675.00
2.	1 row 4 modules	126 x 228 x 111	1	KV 7104	2330.00	KV 6104	2085.00
3.	1 row 6 modules	146 x 238 x 111	1	KV 7106	2770.00	KV 6106	2485.00
4.	1 row 9 modules	202 x 238 x 111	1	KV 7109	3455.00	KV 6109	3120.00
5.	1 row 12 modules	295 x 333 x 129	1	KV 9112 M	5600.00	KV 8112 M	4515.00
6.	1 row 18 modules	400 x 333 x 129	1	KV 9118 M	6980.00	KV 8118 M	5425.00
7.	2 rows 24 modules	295 x 458 x 129	1	KV 9224 M	7845.00	KV 8224 M	6145.00
8.	2 rows 36 modules	403 x 483 x 129	1	KV 9236 M	10135.00	KV 8236 M	7920.00
9.	3 rows 36 modules	295 x 583 x 129	1	KV 9336 M	9845.00	KV 8336 M	8240.00
10.	4 rows 48 modules	295 x 708 x 129	1	KV 9448 M	12810.00	KV 8448 M	11755.00
11.	3 rows 54 modules	403 x 630 x 129	1	KV 9354 M	14200.00	KV 8354 M	13310.00



KV PC Small - type Distribution Boards IP 65 "Weather proof"

1.	4.5 modules	126 x 228 x 111	1			KV PC 8104	2855.00
2.	9 modules	200 x 238 x 111	1			KV PC 8109	3580.00
3.	12 modules	295 x 333 x 129	1	KV PC 9112			7820.00
4.	24 modules	295 x 458 x 129	1	KV PC 9224			10550.00
5.	36 modules	295 x 583 x 129	1	KV PC 9336			13370.00
6.	48 modules	295 x 708 x 129	1	KV PC 9448			17555.00



ENYFLEX Empty enclosures in accordance with IEC62208 for customized solutions and individual application

Empty Boxes IP 66

Sl.No.	Description	Box Dimensions (LxBxH) (mm)	Packing Quantity (Nos.)	Catalog No.	Price ₹/- Each
1.	Box without mounting plate (with transparent lid)	136 x 253 x 115	1	KG 9001	2030.00
2.	Box without mounting plate (with transparent lid)	168 x 253 x 115	1	KG 9002	2130.00
3.	Box without mounting plate (with transparent lid)	217 x 253 x 115	1	KG 9003	2290.00
4.	Box without mounting plate (with opaque lid)	136 x 253 x 115	1	KG 9001 IN	2030.00
5.	Box without mounting plate (with opaque lid)	168 x 253 x 115	1	KG 9002 IN	2130.00
6.	Box without mounting plate (with opaque lid)	217 x 253 x 115	1	KG 9003 IN	2290.00
7.	Box with mounting plate (with transparent lid)	295 x 583 x 182	1	KV 9331	14125.00



Empty Boxes IP 66 (with plain walls)

Sl.No.	Description	Box Dimensions (LxBxH) (mm)	TRANSPARENT LID Catalog No.	Price ₹/- Each	Packing Quantity (Nos.)	OPAQUE LID Catalog No.	Price ₹/- Each
1.	Size 1 box	300 x 150 x 170	K 0100	3390.00	1	K 0101	3390.00
2.	Size 2 box	300 x 300 x 170	K 0200	4725.00	1	K 0201	4725.00
3.	Size 3 box	300 x 450 x 170	K 0300	6110.00	1	K 0301	6110.00
4.	Size 4 box	300 x 600 x 170	K 0400	7345.00	1	K 0401	7345.00



Sl.No.	Description	Packing Quantity (NOs.)	Box Dimensions (LxBxH) (mm)	Catalog No. Grey	Catalog No. Black	Price ₹/-Each
--------	-------------	-------------------------	-----------------------------	------------------	-------------------	---------------

LOCAL CONTROL STATIONS IP 66

For industrial environments



1.	2 Position selector switch (1 NO + 1 NC)	1	93 x 93 x 87	SA 0101-G6		1100.00
2.	Emergency stop (1 NC)	1	93 x 93 x 101	PBS 0101-G6		855.00
3.	Emergency stop (key and 1NC)	1	93 x 93 x 123	PBS 0101K-G6		1405.00
4.	Start stop (1 NO + 1 NC)	1	104 x 104 x 79	PBS 0201-G6		975.00
5.	Forward, reverse, stop (2 NO+1NC)	1	130 x 130 x 86	PBS 0301-G6		1710.00
6.	Start, stop Emergency stop (1 NO + 2NC)	1	130 x 130 x 116	PBS 0401-G6		1905.00
7.	Start stop with selector switch (3 NO +1 NC)	1	130 x 130 x 102	PSS 0201-G6		2135.00

For weatherproof and outdoor installations



1.	2 Position selector switch (1 NO + 1 NC)	1	93 x 93 x 87	SA 0101-H6	SA 0101-C6	1160.00
2.	Emergency stop (1 NC)	1	93 x 93 x 101	PBS 0101-H6	PBS 0101-C6	915.00
3.	Emergency stop (key and 1NC)	1	93 x 93 x 123	PBS 0101K-H6	PBS 0101K-C6	1465.00
4.	Start stop (1 NO + 1 NC)	1	104 x 104 x 79	PBS 0201-H6	PBS 0201-C6	1040.00
5.	Forward, reverse, stop (2 NO+1NC)	1	130 x 130 x 86	PBS 0301-H6	PBS 0301-C6	1780.00
6.	Start, stop Emergency stop (1 NO + 2NC)	1	130 x 130 x 116	PBS 0401-H6	PBS 0401-C6	1980.00
7.	Start stop with selector switch (3 NO +1 NC)	1	130 x 130 x 102	PSS 0201-H6	PSS 0201-C6	2210.00

Terminal Boxes IP 66/67

For industrial environments



Sl.No.	Cable size	No of terminals	Packing Quantity (NOs.)	Box Dimensions (LxBxH) (mm)	Catalog No. Grey	Catalog No. Black	Price ₹/-Each
1.	1.5 sq.mm	9	1	93 x 93 x 62	TS DK 0109 G		620.00
2.	2.5 sq.mm	16	1	180 x 130 x 77	TS DK 0216 G		1215.00
3.	2.5 sq.mm	20	1	180 x 130 x 77	TS DK 0220 G		1260.00
4.	2.5 sq.mm	25	1	210 x 155 x 92	TS DK 0225 G		1910.00
5.	4 sq.mm	9	1	104 x 104 x 70	TS DK 0409 G		715.00
6.	4 sq.mm	16	1	180 x 130 x 77	TS DK 0416 G		1250.00
7.	4 sq.mm	20	1	210 x 155 x 92	TS DK 0420 G		1900.00
8.	4 sq.mm	25	1	255 x 205 x 112	TS DK 0425 G		2840.00

For weatherproof and outdoor installations (with screwless terminals)

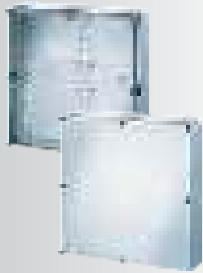


1.	2.5 sq.mm	9	1	93 x 93 x 62	TC KF 0209 H	TC KF 0209 C	715.00
2.	2.5 sq.mm	16	1	180 x 130 x 77	TC KF 0216 H	TC KF 0216 C	1465.00
3.	2.5 sq.mm	20	1	180 x 130 x 77	TC KF 0220 H	TC KF 0220 C	1515.00
4.	2.5 sq.mm	25	1	210 x 155 x 92	TC KF 0225 H	TC KF 0225 C	1955.00
5.	4 sq.mm	9	1	104 x 104 x 70	TC KF 0409 H	TC KF 0409 C	865.00
6.	4 sq.mm	16	1	180 x 130 x 77	TC KF 0416 H	TC KF 0416 C	1590.00
7.	4 sq.mm	20	1	210 x 155 x 92	TC KF 0420 H	TC KF 0420 C	2045.00
8.	4 sq.mm	25	1	255 x 205 x 112	TC KF 0425 H	TC KF 0425 C	3145.00



Sl.No.	Description	Box Dimensions	Packing Quantity (Nos.)	TRANSPARENT LID		OPAQUE LID	
				Catalog No.	Price ₹/- Each	Catalog No.	Price ₹/- Each

Mi - Empty Boxes



1.	Size 1 box	300 x 150 x 170	1	Mi 0100	3390.00	Mi 0101	3390.00
2.	Size 2 box	300 x 300 x 170	1	Mi 0200	4750.00	Mi 0201	4750.00
3.	Size 3 box	300 x 450 x 170	1	Mi 0300	6265.00	Mi 0301	6265.00
4.	Size 4 box	300 x 600 x 170	1	Mi 0400	7715.00	Mi 0401	7715.00
5.	Size 6 box	450 x 600 x 170	1	Mi 0600	14015.00	Mi 0601	14015.00
6.	Size 8 box	600 x 600 x 170	1	Mi 0800	18730.00	Mi 0801	17255.00
7.	Size 2 box with high lid	300 x 300 x 214	1	Mi 0210	5100.00	Mi 0211	5100.00
8.	Size 3 box with high lid	300 x 450 x 214	1	Mi 0310	6830.00	Mi 0311	6830.00
9.	Size 4 box with high lid	300 x 600 x 214	1	Mi 0410	8735.00	Mi 0411	8735.00

Mi Boxes with hinged doors



1.	Size 2 box	300 x 300 x 182	1	Mi 0220	5565.00	Mi 0221	5565.00
----	------------	-----------------	---	---------	---------	---------	---------

Mi Boxes with hinged lids

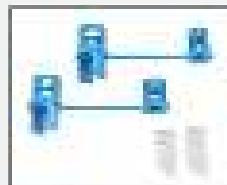


1.	Size 1 box	300 x 165 x 170	1	Mi 9100	5685.00	Mi 9101	5685.00
2.	Size 2 box	300 x 315 x 170	1	Mi 9200	7025.00	Mi 9201	7025.00
3.	Size 2 box with high lid	300 x 315 x 214	1	Mi 9210	7365.00	Mi 9211	7365.00
4.	Size 3 box	315 x 450 x 170	1	Mi 9300	8395.00	Mi 9301	8395.00
5.	Size 3 box with high lid	315 x 450 x 214	1	Mi 9310	8940.00	Mi 9311	8940.00
6.	Size 4 box	315 x 600 x 170	1	Mi 9400	9850.00	Mi 9401	9850.00
7.	Size 4 box with high lid	315 x 600 x 214	1	Mi 9410	10840.00	Mi 9411	10840.00

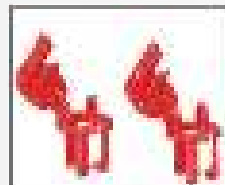
Available with different locking provisions



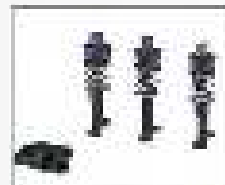
Manual Operation



Padlocking



Sealing



Triangular key



Tool Operation

- For the assembly of power switchgear and controlgear assemblies (PSC) up to 630 A

MI Busbar box

MI Circuit breaker box

MI KWH meter box

MI isolator boxes,
MI MCCB circuit - breaker boxes with thermal and magnetic release up to 630 A

Pole Mounting Brackets

HENSEL

Sl.No.	Description	Packing Quantity (Nos.)	Catalog No.	Price ₹/- Each
DK Pole Mounting Kit				
1.	For Cable Junction boxes DK 02..04..06. , KF 02..04..06 , WP 02..04..06..	1	DK MB 1	1140.00
2.	For Cable Junction boxes DK 10... DK 16... , KF 10... KF 16... , WP 10...	1	DK MB 2	2280.00
3.	For Cable Junction boxes DK 25.. DK 35.. DK 50.., KF 25.. KF 35..KF 50..	1	DK MB 3	2765.00
KV Pole Mounting Kit				
1.	For small type distribution boards with 3 modules	1	KV MB 3	1755.00
2.	For small type distribution boards with 4.5 modules	1	KV MB 4	1990.00
3.	For small type distribution boards with 6 modules	1	KV MB 6	2115.00
4.	For small type distribution boards with 9 modules	1	KV MB 9	2290.00
5.	For small type distribution boards with 12 modules per row	1	KV MB 12	2425.00
6.	For small type distribution boards with 18 modules per row	1	KV MB 18	3015.00
MI Pole Mounting Kit				
1.	For Mi enclosures - for box width 150mm	1	Mi MB 1	2480.00
2.	For Mi enclosures - for box width 300mm	1	Mi MB 2	3215.00

Isolator Boxes IP65 / IP66

Sl.No.	IP65 / IP66	Price ₹/- Each	Packing Quantity (Nos.)	IP65 / IP66	Price ₹/- Each
1.	IB MI 3100 G	10930.00	1	IB MI 4100 G	11990.00
2.	IB MI 3125 G	12605.00	1	IB MI 4125 G	13920.00
3.	IB MI 3160 G	22330.00	1	IB MI 4160 G	24085.00
4.	IB MI 3200 G	22895.00	1	IB MI 4200 G	24600.00
5.	IB MI 3250 G	29220.00	1	IB MI 4250 G	31765.00

Isolator Boxes IP66

Sl.No.	IP66	Price ₹/- Each	Packing Quantity (Nos.)	IP66	Price ₹/- Each
1.	IL DK 3016 G	2350.00	1	IL DK 4016 G	2540.00
2.	IL DK 3020 G	2280.00	1	IL DK 4020 G	2565.00
3.	IL DK 3025 G	2380.00	1	IL DK 4025 G	2695.00
4.	IB KF 3016 G	3560.00	1	IB KF 4016 G	3840.00
5.	IB KF 3020 G	3615.00	1	IB KF 4020 G	3900.00
6.	IB KF 3025 G	3760.00	1	IB KF 4025 G	4075.00
7.	IB KF 3032 G	3870.00	1	IB KF 4032 G	4180.00
8.	IB KF 3040 G	4380.00	1	IB KF 4040 G	4780.00
9.	IB KF 3063 G	4545.00	1	IB KF 4063 G	4950.00
10.	IB KF 3080 G	8840.00	1	IB KF 4080 G	9690.00

SI.No.	Cable Entry	Sealing range (mm dia)	Catalog No.		Packing Qty (Nos.)	Price ₹/- Each
			RAL 7035 (Grey)	RAL 9005 (Black)		

Synthetic short entry thread metric (with one piece sealing ring)

1.	M 12 x 1.5	2.5 - 6.5	1555.12.06	1545.12.06	100	35.00
2.	M 16 x 1.5	4.5 - 10	1555.17.10	1545.17.10	50	37.00
3.	M 20 x 1.5	7.0 - 13.0	1555.20.13	1545.20.13	50	45.00
4.	M 25 x 1.5	10.0 - 17.0	1555.25.17	1545.25.17	25	62.00
5.	M 32 x 1.5	17.0 - 25.0	1555.32.25	1545.32.25	20	110.00

Synthetic short entry thread metric (with reducing sealing ring)

1.	M 16 x 1.5	2.0 - 6.0	1555.17.06	1545.17.06	50	45.00
2.	M 20 x 1.5	3.5 - 8.0	1555.20.08	1545.20.08	50	52.00
3.	M 25 x 1.5	5.0 - 11.0	1555.25.11	1545.25.11	25	70.00

Synthetic long entry thread metric (with one piece sealing ring)

1.	M 12 x 1.5	2.5 - 6.5	1555.12.1.06	1545.12.1.06	100	40.00
2.	M 16 x 1.5	4.5 - 10	1555.17.1.10	1545.17.1.10	50	41.00
3.	M 20 x 1.5	7.0 - 13.0	1555.20.1.13	1545.20.1.13	50	56.00
4.	M 25 x 1.5	10.0 - 17.0	1555.25.1.17	1545.25.1.17	25	96.00
5.	M 32 x 1.5	17.0 - 25.0	1555.32.1.25	1545.32.1.25	20	131.00
6.	M 40 x 1.5	22.0 - 33.0	1555.40.1.33	1545.40.1.33	10	274.00
7.	M 50 x 1.5	28.0 - 38.0	1555.50.1.38	1545.50.1.38	5	425.00
8.	M 63 x 1.5	32.0 - 44.0	1555.63.1.44	1545.63.1.44	5	665.00

Synthetic long entry thread metric (with reducing sealing ring)

1.	M 16 x 1.5	2.0 - 6.0	1555.17.1.06	1545.17.1.06	50	49.00
2.	M 20 x 1.5	3.5 - 8.0	1555.20.1.08	1545.20.1.08	50	60.00
3.	M 25 x 1.5	5.0 - 11.0	1555.25.1.11	1545.25.1.11	25	103.00

Locknuts

1.	M 12 x 1.5		8212	8212.40	100	9.00
2.	M 16 x 1.5		8217	8217.40	50	10.00
3.	M 20 x 1.5		8220	8220.40	50	11.00
4.	M 25 x 1.5		8225	8225.40	25	17.00
5.	M 32 x 1.5		8232	8232.40	20	23.00
6.	M 40 x 1.5		8240	8240.40	10	38.00
7.	M 50 x 1.5		8250	8250.40	5	87.00
8.	M 63 x 1.5		8255.63	8245.63	5	132.00

Synthetic entry thread Pg (with one piece sealing ring)

1.	Pg 7	2.5 - 6.5	1555.07.06	1545.07.06	100	32.00
2.	Pg 9	3.0 - 8.0	1555.09.08	1545.09.08	50	37.00
3.	Pg 11	2.0 - 7.0	1555.11.07	1545.11.07	50	54.00
4.	Pg 11	4.0 - 10.0	1555.11.10	1545.11.10	50	40.00
5.	Pg 13	3.0 - 7.0	1555.13.07	1545.13.07	50	62.00
6.	Pg 13	5.5 - 12.0	1555.13.12	1545.13.12	50	44.00
7.	Pg 16	5.0 - 11.0	1555.16.11	1545.16.11	50	71.00
8.	Pg 16	8.5 - 14.0	1555.16.14	1545.16.14	50	50.00
9.	Pg 21	6.5 - 14.0	1555.21.14	1545.21.14	25	116.00
10.	Pg 21	11.5 - 18.0	1555.21.18	1545.21.18	25	95.00
11.	Pg 29	17.0 - 25.0	1555.29.25	1545.29.25	20	184.00
12.	Pg 36	22.0 - 33.0	1555.36.33	1545.36.33	10	573.00
13.	Pg 42	28.0 - 38.0	1555.42.38	1545.42.38	5	771.00
14.	Pg 48	32.0 - 44.0	1555.48.44	1545.48.44	5	873.00



Sl.No.	Cable Entry	Sealing range (mm dia)	Catalog No. RAL 7035 (Grey)	Catalog No. RAL 9005 (Black)	Packing Qty (Nos.)	Price ₹/- Each
--------	-------------	---------------------------	-----------------------------------	------------------------------------	-----------------------	-------------------

Locknuts for Thread Pg

1.	Pg 7		8207	8207.40	100	12.00
2.	Pg 9		8209	8209.40	50	10.00
3.	Pg 11		8211	8211.40	50	10.00
4.	Pg 13		8213	8213.40	50	12.00
5.	Pg 16		8216	8216.40	50	18.00
6.	Pg 21		8221	8221.40	25	25.00
7.	Pg 29		8229	8229.40	20	39.00
8.	Pg 36		8236	8236.40	10	110.00
9.	Pg 42		8242	8242.40	5	133.00
10.	Pg 48		8248.48	8248.48.40	5	150.00



Syntec entry thread NPT (with one piece sealing ring)

1.	NPT 3/8"	3.0 - 8.0	1555.N0375.08	1545.N0375.08	50	43.00
2.	NPT 1/2"	3.0 - 7.0	1555.N0500.07	1545.N0500.07	50	69.00
3.	NPT 1/2"	5.5 - 12.0	1555.N0500.12	1545.N0500.12	50	61.00
4.	NPT 3/4"	6.5 - 14.0	1555.N0750.14	1545.N0750.14	25	118.00
5.	NPT 3/4"	11.0 - 18.0	1555.N0750.18	1545.N0750.18	25	106.00
6.	NPT 1"	17.0 - 22.0	1555.N1000.22	1545.N1000.22	20	138.00



Synthetic pressure balance element with membrane

1.	M 12x1.5			2445.12	1	445.00
2.	M 12x1.5			8245.12 (Checknut)	1	10.00

Synthetic Locking Plug

1.	M 12 x 1.5		8855.12	8845.12	100	9.00
2.	M 16 x 1.5		8855.17	8845.17	100	9.00
3.	M 20 x 1.5		8855.20	8845.20	100	9.00
4.	M 25 x 1.5		8855.25	8845.25	100	12.00
5.	M 32 x 1.5		8855.32	8845.32	50	17.00
6.	M 40 x 1.5		8855.40	8845.40	50	29.00
7.	M 50 x 1.5		8855.50	8845.50	10	40.00
8.	M 63 x 1.5		8855.63	8845.63	10	56.00



* Available in PG range also.

* Use with Corresponding Locknut.

Synthetic Enlarging Fittings

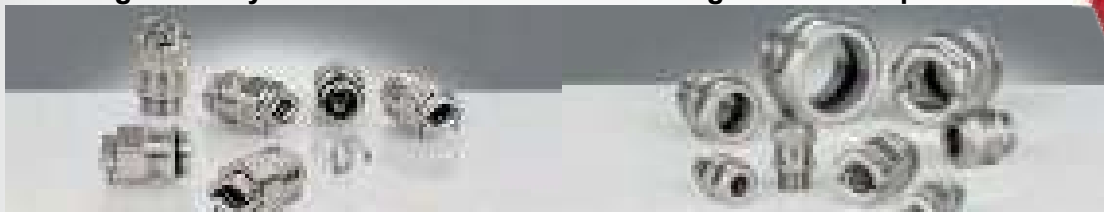
1.	M 12 x 1.5 to M 16 x 1.5		3755.12.17		100	66.00
2.	M 16 x 1.5 to M 20 x 1.5		3755.17.20		100	74.00
3.	M 20 x 1.5 to M 25x 1.5		3755.20.25		100	90.00
4.	M 25 x 1.5 to M 32 x 1.5		3755.25.32		50	247.00
5.	M 32 x 1.5 to M 40 x 1.5		3755.32.40		25	389.00
6.	M 40 x 1.5 to M 50 x 1.5		3755.40.50		10	750.00
7.	M 50 x 1.5 to M 63 x 1.5		3755.50.63		10	912.00



* Available in PG range also.

Progress easyCONNECT Ex e II

Progress Ex Compact Ex d IIC



Price on Request



Sl.No.	Cable Entry	Sealing range (mm dia)	Catalog No. RAL 7035 (Grey)	Packing Qty (Nos.)	Price ₹/- Each
--------	-------------	---------------------------	-----------------------------------	-----------------------	-------------------

Synthetic Reduction Fittings

1.	M 16 x 1.5	to M 12 x 1.5	3455.17.12	100	58.00
2.	M 20 x 1.5	to M 12 x 1.5	3455.20.12	100	60.00
3.	M 20 x 1.5	to M 16 x 1.5	3455.20.17	100	60.00
4.	M 25 x 1.5	to M 12 x 1.5	3455.25.12	100	92.00
5.	M 25 x 1.5	to M 16 x 1.5	3455.25.17	100	92.00
6.	M 25 x 1.5	to M 20 x 1.5	3455.25.20	100	92.00
7.	M 32 x 1.5	to M 12 x 1.5	3455.32.12	50	175.00
8.	M 32 x 1.5	to M 16 x 1.5	3455.32.17	50	176.00
9.	M 32 x 1.5	to M 20 x 1.5	3455.32.20	50	176.00
10.	M 32 x 1.5	to M 25 x 1.5	3455.32.25	50	176.00
11.	M 40 x 1.5	to M 16 x 1.5	3455.40.17	50	345.00
12.	M 40 x 1.5	to M 20 x 1.5	3455.40.20	50	345.00
13.	M 40 x 1.5	to M 25 x 1.5	3455.40.25	25	345.00
14.	M 40 x 1.5	to M 32 x 1.5	3455.40.32	25	350.00
15.	M 50 x 1.5	to M 20 x 1.5	3455.50.20	5	402.00
16.	M 50 x 1.5	to M 25 x 1.5	3455.50.25	5	402.00
17.	M 50 x 1.5	to M 32 x 1.5	3455.50.32	5	408.00
18.	M 50 x 1.5	to M 40 x 1.5	3455.50.40	5	408.00
19.	M 63 x 1.5	to M 25 x 1.5	3455.63.25	5	487.00
20.	M 63 x 1.5	to M 32 x 1.5	3455.63.32	5	494.00
21.	M 63 x 1.5	to M 40 x 1.5	3455.63.40	5	494.00
22.	M 63 x 1.5	to M 50 x 1.5	3455.63.50	5	494.00



NEW



Multi cable glands



Nickel plated brass gland



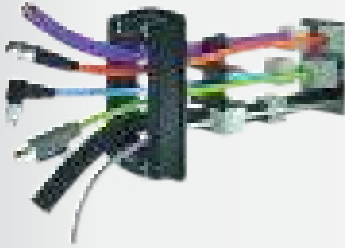
Price on Request

*** Products available in PG range also**

AGRO cable glands – the all-rounders.



Price on Request



KDS-SR



KDS-R round frames



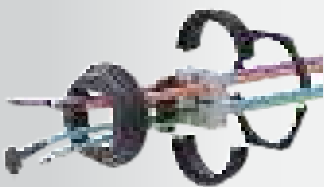
Sealings



KDS-SI



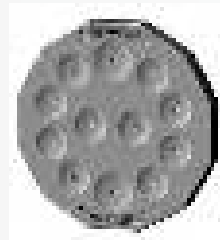
KES-overall



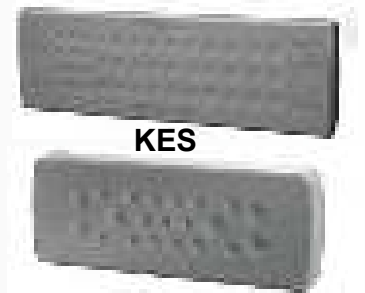
KDS-R



KDS-KV

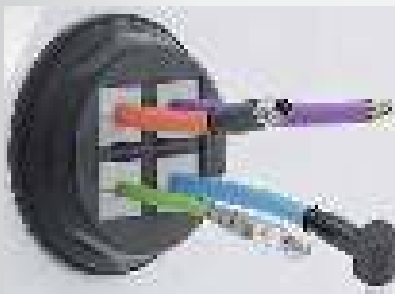


KES-E-R



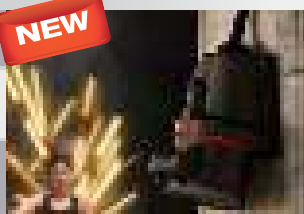
KES

KES-E



Price on Request

NEW



walther NEO PLUG AND SOCKETS IP 54



Description	Rating Amp	No. of Poles	Packing Quantity (Nos.)	Screw Version	Cage Clamp Version	Price ₹ /- Each
-------------	------------	--------------	-------------------------	---------------	--------------------	-----------------



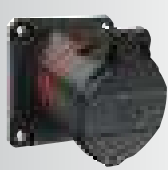
Plug	16/20 A	2P + E	10	FW211306SK		345.00
		3P + N + E	10	FW211506SK		490.00
		2P + E	10		FW211306CC	480.00
		3P + N + E	10		FW211506CC	690.00



Coupler	16/20 A	2P + E	10	FW311306SK		505.00
		3P + N + E	10	FW311506SK		660.00
		2P + E	10		FW311306CC	645.00
		3P + N + E	10		FW311506CC	860.00



Panel sockets straight	16/20 A	2P + E	10	FW412306SK		430.00
		3P + N + E	10	FW410506SK		650.00
		2P + E	10		FW412306CC	615.00
		3P + N + E	10		FW410506CC	850.00



Panel sockets angled	16/20 A	2P + E	10	FW512306SK		430.00
		3P + N + E	10	FW510506SK		650.00
		2P + E	10		FW512306CC	615.00
		3P + N + E	10		FW510506CC	850.00

Price on Request

Appliance Inlet

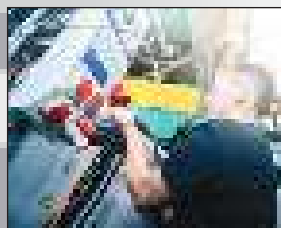


Wall Socket Outlet





Description	Rating Amp	No. of Poles	Degree of Protection	Packing Quantity (Nos.)	Catalog No.	Price ₹/- Each	
 Wall Socket Outlet	16/20 A	2P + E	IP 44	10	110306	820.00	
		3P + E	IP 44	10	110406	895.00	
		3P + N + E	IP 44	10	110	850.00	
	32 A	2P + E	IP 44	10	130306	1025.00	
		3P + E	IP 44	10	130406	1115.00	
		3P + N + E	IP 44	10	130	1035.00	
	63 A	2P + E	IP 44	2	161306	5025.00	
		3P + E	IP 44	2	161406	4230.00	
		3P + N + E	IP 44	2	161	4230.00	
 Wall Socket Outlet Watertight	16/20 A	2P + E	IP 67	5	119306	2180.00	
		3P + E	IP 67	5	119406	2045.00	
		3P + N + E	IP 67	5	119	2045.00	
	32 A	2P + E	IP 67	5	139306	3100.00	
		3P + E	IP 67	5	139406	2385.00	
		3P + N + E	IP 67	5	139	2785.00	
	63 A	2P + E	IP 67	2	169306	5435.00	
		3P + E	IP 67	2	169406	4960.00	
		3P + N + E	IP 67	2	169	5880.00	
125 A	2P + E	IP 67	1	178306 OK	28010.00		
	3P + E	IP 67	1	178406 OK	40725.00		
	3P + N + E	IP 67	1	178 OK	31790.00		
 Panel Mounting Socket Angled	16/20 A	2P + E	IP 44	10	510306	555.00	
		3P + E	IP 44	10	510406	815.00	
		3P + N + E	IP 44	10	510	745.00	
	32 A	2P + E	IP 44	10	530306	875.00	
		3P + E	IP 44	10	530406	995.00	
		3P + N + E	IP 44	10	530	965.00	
	63 A	2P + E	IP 44	5	560306	4325.00	
		3P + E	IP 44	5	560406	3590.00	
		3P + N + E	IP 44	5	560	3590.00	
 Panel Mounting Socket Straight	16/20 A	2P + E	IP 44	10	410306	515.00	
		3P + E	IP 44	10	410406	815.00	
		3P + N + E	IP 44	10	410	815.00	
	32 A	2P + E	IP 44	10	430306	875.00	
		3P + E	IP 44	10	430406	1040.00	
		3P + N + E	IP 44	10	430	935.00	
	63 A	2P + E	IP 44	5	460306	4325.00	
		3P + E	IP 44	5	460406	3590.00	
		3P + N + E	IP 44	5	460	3590.00	
 Panel Socket Straight for container applications	32 A	3P + E	IP 67	10	439403	1875.00	
	32 A	Plug for container applications	3P + E	IP 67	10	239403	2480.00
		Coupler for container applications	3P + E	IP 67	10	339403	2830.00



Description	Rating Amp	No. of Poles	Degree of Protection	Packing Quantity (Nos.)	Catalog No.	Price ₹/- Each
-------------	------------	--------------	----------------------	-------------------------	-------------	----------------



Panel Mounting Socket Angled Watertight	16/20 A	2P + E	IP 67	10	519306	1105.00
		3P + E	IP 67	10	519406	1235.00
		3P + N + E	IP 67	10	519	1445.00
	32 A	2P + E	IP 67	10	539306	1715.00
		3P + E	IP 67	10	539406	1655.00
		3P + N + E	IP 67	10	539	1655.00
	63 A	2P + E	IP 67	5	569306	4930.00
		3P + E	IP 67	5	569406	4325.00
		3P + N + E	IP 67	5	569	4325.00
	125 A	2P + E	IP 67	2	579306	15580.00
		3P + E	IP 67	2	579406	14340.00
		3P + N + E	IP 67	2	579	14340.00



Panel Mounting Socket Straight Watertight	16/20 A	2P + E	IP 67	10	419306	1105.00
		3P + E	IP 67	10	419406	1270.00
		3P + N + E	IP 67	10	419	1235.00
	32 A	2P + E	IP 67	10	439306	1715.00
		3P + E	IP 67	10	439406	1860.00
		3P + N + E	IP 67	10	439	1655.00
	63 A	2P + E	IP 67	5	469306	4930.00
		3P + E	IP 67	5	469406	4325.00
		3P + N + E	IP 67	5	469	4325.00
	125 A	2P + E	IP 67	2	479306	15580.00
		3P + E	IP 67	2	479406	14340.00
		3P + N + E	IP 67	2	479	14340.00


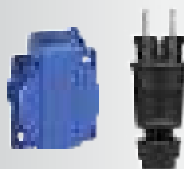




Plug	16/20 A	2P + E	IP 44	10	210306	415.00
		3P + E	IP 44	10	210406	505.00
		3P + N + E	IP 44	10	210	480.00
	32 A	2P + E	IP 44	10	230306	600.00
		3P + E	IP 44	10	230406	785.00
		3P + N + E	IP 44	10	230	670.00
	63 A	2P + E	IP 44	5	260306	3845.00
		3P + E	IP 44	5	260406	3400.00
		3P + N + E	IP 44	5	262	2895.00



Plug Watertight	16/20 A	2P + E	IP 67	10	219306	990.00
		3P + E	IP 67	10	219406	1350.00
		3P + N + E	IP 67	10	219	1095.00
	32 A	2P + E	IP 67	10	239306	1620.00
		3P + E	IP 67	10	239406	1655.00
		3P + N + E	IP 67	10	239	1365.00
	63 A	2P + E	IP 67	5	269306	4895.00




Description	Rating Amp	No. of Poles	Degree of Protection	Packing Quantity (Nos.)	Catalog No.	Price ₹/- Each
 Plug Watertight	125 A	3P + E	IP 67	5	269406	3910.00
		3P + N + E	IP 67	5	268	3400.00
		2P + E	IP 67	2	279306	13955.00
		3P + E	IP 67	2	279406	13350.00
		3P + N + E	IP 67	2	279	13350.00
 Schuko Socket Schuko Plug	16/20 A	2P + E	IP 44	10	10003	380.00
	16/20 A	2P + E	IP 44	10	10043	695.00
	16/20 A	2P + E	IP 44	10	310306	595.00
		3P + E	IP 44	10	310406	730.00
		3P + N + E	IP 44	10	310	685.00
 Coupler	32 A	2P + E	IP 44	10	330306	815.00
		3P + E	IP 44	10	330406	1025.00
		3P + N + E	IP 44	10	330	900.00
	63 A	2P + E	IP 44	5	360306	4895.00
		3P + E	IP 44	5	360406	4610.00
		3P + N + E	IP 44	5	362	4610.00
 Coupler with gland entry Watertight	16/20 A	2P + E	IP 67	10	319306	1425.00
		3P + E	IP 67	10	319406	1625.00
		3P + N + E	IP 67	10	319	1625.00
	32 A	2P + E	IP 67	10	339306	2100.00
		3P + E	IP 67	10	339406	2005.00
	63 A	3P + N + E	IP 67	10	339	2005.00
		2P + E	IP 67	5	369306	4895.00
		3P + E	IP 67	5	369406	4610.00
	125 A	3P + N + E	IP 67	5	368	5310.00
		2P + E	IP 67	2	379306	15830.00
		3P + E	IP 67	2	379406	15230.00
		3P + N + E	IP 67	2	379	15230.00



Interlocked Sockets / Wall Sockets with DIN Rail

 Switched wall socket, with interlocking, IP 44	16/20 A	2P + E	IP 44	1	AT 110 306	8615.00
		3P + E	IP 44	1	AT 110 406	12365.00
		3P + N + E	IP 44	1	AT 110	9155.00
	32 A	2P + E	IP 44	1	AT 130 306	12050.00
		3P + E	IP 44	1	AT 130 406	18310.00
		3P + N + E	IP 44	1	AT 130	13195.00
	63 A	2P + E	IP 44	1	AE 160 306	25845.00
		3P + E	IP 44	1	AE 160 406	34270.00
		3P + N + E	IP 44	1	AE 160	26960.00
 Switched wall socket, with interlocking, IP 67	16/20 A	2P + E	IP 67	1	AT 119 306	10410.00
		3P + E	IP 67	1	AT 119 406	13895.00
		3P + N + E	IP 67	1	AT 119	11920.00
	32 A	2P + E	IP 67	1	AT 139 306	13195.00
		3P + E	IP 67	1	AT 139 406	19200.00
		3P + N + E	IP 67	1	AT 139	14340.00
63 A	2P + E	IP 67	1	AE 169 306	26960.00	



Description	Rating Amp	No. of Poles	Degree of Protection	Packing Quantity (Nos.)	Catalog No.	Price ₹/- Each	
	125 A	3P + E	IP 67	1	AE 169 406	34810.00	
		3P + N + E	IP 67	1	AE 169	28135.00	
		2P + E	IP 67	1	AO 179 306	83195.00	
		3P + E	IP 67	1	AO 179 406	134315.00	
		3P + N + E	IP 67	1	AO 179	87775.00	
	Interlocking socket, with MCB provision, IP 44	16 A	2P + E	IP 44	1	AU 110 306 TS	13225.00
			3P + E	IP 44	1	AU 110 406 TS	13415.00
		32 A	3P + N + E	IP 44	1	AU 110 TS	13510.00
			2P + E	IP 44	1	AU 130 306 TS	16690.00
			3P + E	IP 44	1	AU 130 406 TS	17835.00
	16 A	2P + E	IP 67	1	AU 119 306 TS	14145.00	
		3P + E	IP 67	1	AU 119 406 TS	13385.00	
		3P + N + E	IP 67	1	AU 119 TS	14465.00	
	32 A	2P + E	IP 67	1	AU 139 306 TS	17580.00	
		3P + E	IP 67	1	AU 139 406 TS	18695.00	
		3P + N + E	IP 67	1	AU 139 TS	18695.00	
	63 A	2P + E	IP 67	1	AL 169 306 TS	32650.00	
		3P + E	IP 67	1	AL 169 406 TS	33475.00	
		3P + N + E	IP 67	1	AL 169 TS	33475.00	

Switched wall sockets IP 44 / IP 67

	16/20 A	2P + E	IP 44	1	6001001	7650.00
		3P + E	IP 44	1	6000701	7525.00
		3P + N + E	IP 44	1	6000101	8150.00
	32 A	2P + E	IP 44	1	6002001	7560.00
		3P + E	IP 44	1	6001701	7620.00
		3P + N + E	IP 44	1	6001101	10775.00
	16/20 A	2P + E	IP 67	1	6001001X7	9840.00
		3P + E	IP 67	1	6000701X7	7810.00
	32 A	3P + N + E	IP 67	1	6000101X7	8590.00
		2P + E	IP 67	1	6002001X7	8215.00
		3P + E	IP 67	1	6001701X7	8495.00
		3P + N + E	IP 67	1	6001101X7	9090.00

Prices available on request



Appliance plug for Wall mounting



Appliance plug for Panel mounting



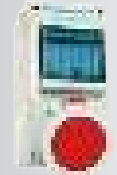
Wall socket, with DIN - rail, IP 44

16/20 A	2P + E	IP 44	1	AR 110 306 TS	6260.00	
	3P + E	IP 44	1	AR 110 406 TS	6575.00	
	3P + N + E	IP 44	1	AR 110 TS	6575.00	
	32 A	2P + E	IP 44	1	AR 130 306 TS	6640.00
		3P + E	IP 44	1	AR 130 406 TS	6815.00
		3P + N + E	IP 44	1	AR 130 TS	6700.00
63 A	2P + E	IP 44	1	AS 160 306 TS	12870.00	
	3P + E	IP 44	1	AS 160 406 TS	12410.00	
	3P + N + E	IP 44	1	AS 160 TS	12410.00	



Wall socket, with DIN - rail, IP 54

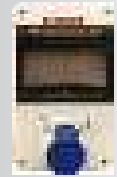
16/20 A	2P + E	IP 54	1	ARN 110 306 TS	5840.00
	3P + N + E	IP 54	1	ARN 110 TS	6055.00



Wall socket, with DIN - rail, IP 67

16/20 A	2P + E	IP 67	1	AR 119 306 TS	6820.00
	3P + E	IP 67	1	AR 119 406 TS	6985.00
	3P + N + E	IP 67	1	AR 119 TS	6950.00
32 A	2P + E	IP 67	1	AR 139 306 TS	7435.00
	3P + E	IP 67	1	AR 139 406 TS	7575.00
	3P + N + E	IP 67	1	AR 139 TS	7370.00
63 A	2P + E	IP 67	1	AS 169 306 TS	13490.00
	3P + E	IP 67	1	AS 169 406 TS	12885.00
	3P + N + E	IP 67	1	AS 169 TS	12885.00

Wall Sockets with DIN - Rail, IP 44 / IP 54 / IP 66



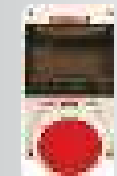
Wall socket, with DIN - Rail, IP 44

16/20 A	2P + E	IP 44	1	TR 110 306 TS	2855.00
	3P + E	IP 44	1	TR 110 406 TS	3165.00
	3P + N + E	IP 44	1	TR 110 TS	3165.00
32 A	2P + E	IP 44	1	TR 130 306 TS	3230.00
	3P + E	IP 44	1	TR 130 406 TS	3405.00
	3P + N + E	IP 44	1	TR 130 TS	3295.00



Wall socket, with DIN - rail, IP 54

16/20 A	2P + E	IP 54	1	TRN 110 306 TS	2640.00
	3P + N + E	IP 54	1	TRN 110 TS	2855.00



Wall socket, with DIN - Rail, IP 66

16/20 A	2P + E	IP 66	1	TR 119 306 TS	3415.00
	3P + E	IP 66	1	TR 119 406 TS	3580.00
	3P + N + E	IP 66	1	TR 119 TS	3545.00
32 A	2P + E	IP 66	1	TR 139 306 TS	4030.00
	3P + E	IP 66	1	TR 139 406 TS	4170.00
	3P + N + E	IP 66	1	TR 139 TS	3965.00

* Items in red are long lead products. Kindly check exact delivery dates with us before placing orders.

Extension Cable sets



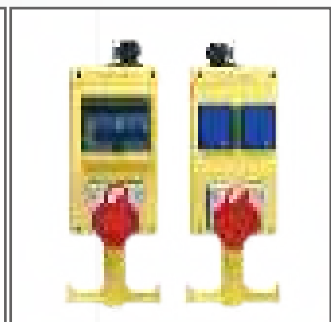
Solid Rubber Units



Cable bridge



suspension type combination





Sl.No.	Description	Packing Qty (Nos.)	Catalog No.	Price ₹/- Each
1.	Empty Cable Drum 235mm dia	1	GT235.SO	5650.00
2.	Empty Cable Drum 310mm dia	1	GT310.SO	8760.00
3.	Empty Cable Drum 380mm dia	1	GT380.SO	19515.00
4.	Empty Cable Drum 450mm dia	1	GT450.SO	22665.00
5.	Trolley arrangement for GT 380 and GT 450	1	397 00 010	16855.00

Customised solutions available as per individual requirements



1.	Premium plastic drum 280mm dia with blank cover	1	IT 266.SO	8255.00
2.	Premium plastic drum 280mm dia with blank cover	1	IT 280.SO	7255.00

Cable Winders and Cable Dispensers

IP 67 Cable Drum

Cable winders for EV charging

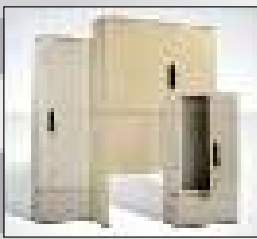


Price on Request

Special Cable Reels

LED Cable Reel





GRP CABINETS IP 54 / IP 65 / IP 66



★ Available in maximum height of 1350mm

Price on Request

GRP Enclosures IP 54 / IP 65 & IP 66



**RAUSCHER
STOCKLIN**

HIGH CURRENT PLUG SOCKETS 160A - 600A

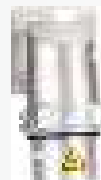
Price on Request

★ Available in 160A, 200A, 250A, 315A, 400A, 500A and 600A

D-Line	C-Line	B-Line	A-Line	Connector Unit

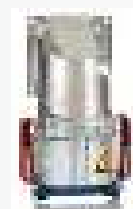
Male Connectors

MC Male Connector	MCP Male Connector Panel Mounted	MCPA MC Panel Mounted Angled	MCW MC Wall Mounted Angled
----------------------	-------------------------------------	---------------------------------	-------------------------------



Female Connectors

FC Coupling	FCP Panel Mounted Receptable	FCP Panel Mounted Receptable Angled	FCW Wall Mounted Receptable
----------------	---------------------------------	--	--------------------------------





TERMS AND CONDITIONS

- This price list supersedes all previous price lists.
- GST / levies are extra as applicable.
- Freight & Insurance: Extra at actuals.
- Prices are subject to change without notice.
- Disputes, if any, are subject to Chennai jurisdiction.



Resident Engineers in

bangalore@hensel-electric.in
goa@hensel-electric.in
kochi@hensel-electric.in
madurai@hensel-electric.in
pune@hensel-electric.in
vizag@hensel-electric.in

baroda@hensel-electric.in
kutch@hensel-electric.in
rajkot@hensel-electric.in

haryana@hensel-electric.in
ludhiana@hensel-electric.in
noida@hensel-electric.in
rajasthan1@hensel-electric.in

indore@hensel-electric.in
nagpur@hensel-electric.in
orissa@hensel-electric.in

guwahati@hensel-electric.in
singrauli@hensel-electric.in

Regional Centers

Chennai 89398 22340
Coimbatore 90031 10666
Hyderabad 98494 89259
Mumbai 99305 29124
Ahmedabad 98985 79168
Delhi 98181 02721
Chandigarh 98141 88708
Dehradun 84778 57046
Jamshedpur 70910 90306
Kolkata 90071 36983

chennai@hensel-electric.in
coimbatore@hensel-electric.in
hyderabad@hensel-electric.in
mumbai2@hensel-electric.in
ahmedabad@hensel-electric.in
delhi@hensel-electric.in
chandigarh1@hensel-electric.in
uttaranchal@hensel-electric.in
jameshedpur@hensel-electric.in
kolkata@hensel-electric.in

AUTHORISED DISTRIBUTOR / DEALER



HEI Edition: 01/2022

Hensel Electric India Private Limited

Plot No. 10, Phase 1, Industrial Estate,
Sriperumbudur, Rajajabad Road,
Sriperumbudur - 631 604,
Kanchipuram District, Tamil Nadu

Tel: +91 44 6710 7700
Fax: +91 44 6710 7724
E-mail: info@hensel-electric.in
Website: www.hensel.in

