

 **L&T Switchgear***
Business

IS NOW

 #

Electrical & Automation



Infrastructure



Home



Buildings



Agriculture



Industries

Maximum Retail Prices
For AU
Effective from 01-02-2025

AU

*Under license from Larsen & Toubro Limited. | #Trademark of Schneider Electric Denmark A/S.

FROM THE COO'S DESK.



L&T Switchgear* IS NOW
Business



Electrical & Automation

Dear Stakeholder,

We are pleased to announce the launch of our new brand "Lauritz Knudsen Electrical & Automation" on 29th May 2024 which will replace the existing brand, L&T Switchgear.

We sincerely thank you for your patronage & support over the last seven decades. We eagerly anticipate continuing this journey under the new name.

During this transition, the specific product names shall remain unchanged, such as ACBs - OMEGA & C-POWER, MCCB-DSine, Final Distribution Products (MCBs, RCCB, RCBO) – AU / Exora, Contactors -MNX/MO/MCX, Drives, PLCs, Metering products etc. Our products now feature a refreshed look that reflects our brand image and brings more consistency across our product line. However, please note that this change will not affect the ordering CAT numbers, technical parameters, and dimensions of our product range. Once the old brand material is exhausted, we will exclusively supply products under our new brand identity.

We assure you that this brand transition will be seamless, ensuring continuous availability of the products, including spares and after-sales support throughout the product's life cycle, whether under the L&T Switchgear or Lauritz Knudsen brand. Product warranties, as per our standard terms, will be honoured for products in both brands.

We kindly request you to update our new brand, Lauritz Knudsen Electrical & Automation, in your list of approved makes.

Thank you for your continued support and cooperation.

Best regards,

Naresh Kumar,

COO & Sr, VP, Electrical Standard Products

Lauritz Knudsen Electrical & Automation

Translating Technology Into Real Benefits

AU Solutions for final distribution offer a unique blend of safety, convenience and performance. Each product in the AU Solutions range is designed to provide lasting benefits.

Lowest Watt Loss

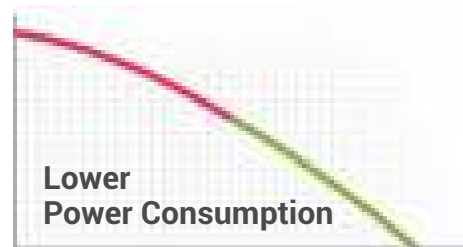
Saves money and natural resources

MCBs from AU Solutions offer the lowest watt loss in the industry. On an average, the watt loss values are almost 55% lower than those prescribed by IEC.

Lower watt loss means lower power consumption, which directly translates into monetary savings. Beyond tangible benefits, lower power requirement also hints at lower consumption of natural resources used for producing energy. In a nutshell, these MCBs are a small, yet significant step towards sustainability.

Maximum Power Loss Per Pole (W)

Current Ratings (A)	As Per IS/IEC 60898	For AU Range of MCBs	% lower
0.5	3	1.9	38%
1	3	2	33%
1.6	3	2.1	30%
2	3	2.1	30%
3	3	2.1	30%
4	3	2.1	30%
5	3	2.1	30%
6	3	1.1	63%
10	3	1.2	60%
16	3.5	1.8	50%
20	4.5	1.9	58%
25	4.5	2.1	54%
32	6	2.4	60%
40	7.5	3.1	59%
50	9	4.1	54%
63	13	4.3	67%
80	15	3.9	74%
100	15	6.2	59%
125	20	9.2	54%



Greater Savings



Towards Sustainability



**For reducing
extra gases**



**For driving
extra miles**



**For electrifying
extra houses**

Note:

[Black colour : HSN code]
Current GST 18%, subject to changes
as per Govt. notification

Short-circuit Fault Indicator in MCBs

Easy diagnosis, saves downtime

With the unique short-circuit fault indication feature, one can conclude if the MCB has tripped due to a short-circuit fault.

It helps in reducing downtime as the faulty phase and cause of MCB tripping are easily detected.

If the MCB has tripped on 'overload', non-critical loads can be switched off before switching the MCB on again.

In the case of a short-circuit fault, the location and cause of the short-circuit should be identified and the necessary corrective action should be taken.

UNIQUE
BENEFIT



UNIQUE
BENEFIT

Earth Leakage Fault Indication in RCCBs

- › Clear indication by yellow coloured flag
- › Easy detection of occurrence of earth leakage

Flexibility

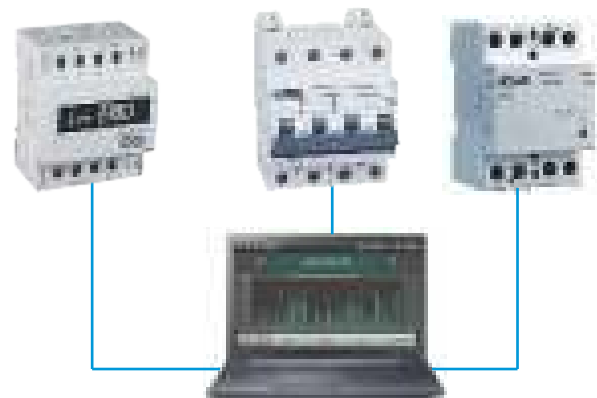
- › **Flexibility in Termination**
 - › Bi-connect terminals offer busbar or cable termination at both incoming and outgoing sides
- › **Line-Load Reversibility**
 - › Either of the sides of an RCCB can be used to terminate supply or load
- › **RCCBs removability with busbar in place**
 - › This feature, with a uniquely designed DIN clip, offers easy removal of DIN mounted RCCBs while the connection busbar is in place with adjoining devices
 - › Offers great flexibility in installation process
 - › Reduces installation time

Communication Capability

For smart systems

With the communication capability of AU Solutions, one can monitor and control various devices remotely.

The complete communication system can be deployed for effective energy management.



RoHS Compliance

Environment-friendly

RoHS compliant AU Solutions do not use any substances which are hazardous to the environment.



MCBs (Miniature Circuit Breakers) [8536]

Range Highlights

- › Conforms to IS/IEC 60898-1, EN 60898-1, IEC 60898-1, EN 60947-2, IEC 60947-2
- › Wide Range of Current Ratings - 0.5A to 125A
- › Short circuit Breaking Capacity
10kA (IEC 60898-1, EN 60898-1) - 0.5A to 63A
15kA (IEC 60947-2) - 0.5 to 40A; 10kA (IEC 60947-2) - 50A & 63A
15kA (IEC 60947-2, EN 60947-2) - 80, 100 & 125A

- › B, C & D Characteristics
- › Available in SP, DP, TP, FP, SPN and TPN
- › Suitable for DC Application
- › Suitable for Isolation
- › Protection Degree - IP 20
- › Availability of wide Range of Site Mountable Accessories

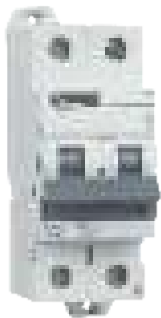
Standard Version AU-10 | 10kA as per IS/IEC 60898-1

Rating	Modules 1 Mod = 17.5 mm	B Curve CAT Nos.	M.R.P. (₹) Per Unit	C Curve CAT Nos.	M.R.P. (₹) Per Unit	D Curve CAT Nos.	M.R.P. (₹) Per Unit
Single Pole							
0.5A	1	-	-	AU10S10E53C	525	AU10S10E53D	530
1A	1	-	-	AU10S10013C	525	AU10S10013D	530
1.6A	1	-	-	AU10S11E63C	525	AU10S11E63D	530
2A	1	-	-	AU10S10023C	525	AU10S10023D	530
3A	1	-	-	AU10S10033C	525	AU10S10033D	530
4A	1	-	-	AU10S10043C	525	AU10S10043D	530
5A	1	-	-	AU10S10053C	525	AU10S10053D	530
6A	1	AU10S10063B	353	AU10S10063C	353	AU10S10063D	440
10A	1	AU10S10103B	353	AU10S10103C	353	AU10S10103D	440
16A	1	AU10S10163B	353	AU10S10163C	353	AU10S10163D	440
20A	1	AU10S10203B	353	AU10S10203C	353	AU10S10203D	440
25A	1	AU10S10253B	353	AU10S10253C	353	AU10S10253D	440
32A	1	AU10S10323B	353	AU10S10323C	353	AU10S10323D	440
40A	1	AU10S10403B	755	AU10S10403C	755	AU10S10403D	795
50A	1	AU10S10503B	755	AU10S10503C	755	AU10S10503D	795
63A	1	AU10S10633B	755	AU10S10633C	755	AU10S10633D	795
Two Pole							
0.5A	2	-	-	AU10S20E53C	1435	AU10S20E53D	1440
1A	2	-	-	AU10S20013C	1435	AU10S20013D	1440
1.6A	2	-	-	AU10S21E63C	1435	AU10S21E63D	1440
2A	2	-	-	AU10S20023C	1435	AU10S20023D	1440
3A	2	-	-	AU10S20033C	1435	AU10S20033D	1440
4A	2	-	-	AU10S20043C	1435	AU10S20043D	1440
5A	2	-	-	AU10S20053C	1435	AU10S20053D	1440
6A	2	AU10S20063B	1035	AU10S20063C	1035	AU10S20063D	1060
10A	2	AU10S20103B	1035	AU10S20103C	1035	AU10S20103D	1060
16A	2	AU10S20163B	1035	AU10S20163C	1035	AU10S20163D	1060
20A	2	AU10S20203B	1035	AU10S20203C	1035	AU10S20203D	1060
25A	2	AU10S20253B	1035	AU10S20253C	1035	AU10S20253D	1060
32A	2	AU10S20323B	1035	AU10S20323C	1035	AU10S20323D	1060
40A	2	AU10S20403B	1670	AU10S20403C	1670	AU10S20403D	1735
50A	2	AU10S20503B	1670	AU10S20503C	1670	AU10S20503D	1735
63A	2	AU10S20633B	1670	AU10S20633C	1670	AU10S20633D	1735
Three Pole							
0.5A	3	-	-	AU10S30E53C	2135	AU10S30E53D	2160
1A	3	-	-	AU10S30013C	2135	AU10S30013D	2160
1.6A	3	-	-	AU10S31E63C	2135	AU10S31E63D	2160
2A	3	-	-	AU10S30023C	2135	AU10S30023D	2160
3A	3	-	-	AU10S30033C	2135	AU10S30033D	2160
4A	3	-	-	AU10S30043C	2135	AU10S30043D	2160
5A	3	-	-	AU10S30053C	2135	AU10S30053D	2160
6A	3	AU10S30063B	1700	AU10S30063C	1700	AU10S30063D	1725
10A	3	AU10S30103B	1700	AU10S30103C	1700	AU10S30103D	1725
16A	3	AU10S30163B	1700	AU10S30163C	1700	AU10S30163D	1725
20A	3	AU10S30203B	1700	AU10S30203C	1700	AU10S30203D	1725
25A	3	AU10S30253B	1700	AU10S30253C	1700	AU10S30253D	1725
32A	3	AU10S30323B	1700	AU10S30323C	1700	AU10S30323D	1725
40A	3	AU10S30403B	2595	AU10S30403C	2595	AU10S30403D	2670
50A	3	AU10S30503B	2595	AU10S30503C	2595	AU10S30503D	2670
63A	3	AU10S30633B	2595	AU10S30633C	2595	AU10S30633D	2670

Note: Standard Pack Quantity for MCB : SP - 12 Nos.,
DP/SPN - 6 Nos., TP - 4 Nos., FP/TPN - 3 Nos.

Lauritz Knudsen, 01.02.2025

Standard Version AU-10 | 10kA as per IS/IEC 60898-1



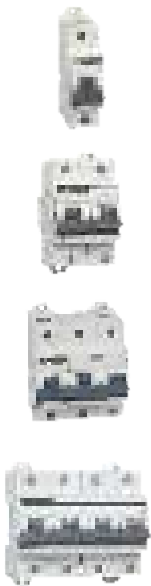
Rating	Modules 1 Mod = 17.5 mm	B Curve CAT Nos.	M.R.P. (₹) Per Unit	C Curve CAT Nos.	M.R.P. (₹) Per Unit	D Curve CAT Nos.	M.R.P. (₹) Per Unit
Four Pole							
0.5A	4	-	-	AU10S40E53C	2625	AU10S40E53D	2645
1A	4	-	-	AU10S40013C	2625	AU10S40013D	2645
1.6A	4	-	-	AU10S41E63C	2625	AU10S41E63D	2645
2A	4	-	-	AU10S40023C	2625	AU10S40023D	2645
3A	4	-	-	AU10S40033C	2625	AU10S40033D	2645
4A	4	-	-	AU10S40043C	2625	AU10S40043D	2645
5A	4	-	-	AU10S40053C	2625	AU10S40053D	2645
6A	4	AU10S40063B	2265	AU10S40063C	2265	AU10S40063D	2275
10A	4	AU10S40103B	2265	AU10S40103C	2265	AU10S40103D	2275
16A	4	AU10S40163B	2265	AU10S40163C	2265	AU10S40163D	2275
20A	4	AU10S40203B	2265	AU10S40203C	2265	AU10S40203D	2275
25A	4	AU10S40253B	2265	AU10S40253C	2265	AU10S40253D	2275
32A	4	AU10S40323B	2265	AU10S40323C	2265	AU10S40323D	2275
40A	4	AU10S40403B	3240	AU10S40403C	3240	AU10S40403D	3365
50A	4	AU10S40503B	3240	AU10S40503C	3240	AU10S40503D	3365
63A	4	AU10S40633B	3240	AU10S40633C	3240	AU10S40633D	3365
SPN							
0.5A	2	-	-	AU10SS0E53C	1365	-	-
1A	2	-	-	AU10SS0013C	1365	-	-
1.6A	2	-	-	AU10SS1E63C	1365	-	-
2A	2	-	-	AU10SS0023C	1365	-	-
3A	2	-	-	AU10SS0033C	1365	-	-
4A	2	-	-	AU10SS0043C	1365	-	-
5A	2	-	-	AU10SS0053C	1365	-	-
6A	2	-	-	AU10SS0063C	960	-	-
10A	2	-	-	AU10SS0103C	960	-	-
16A	2	-	-	AU10SS0163C	960	-	-
20A	2	-	-	AU10SS0203C	960	-	-
25A	2	-	-	AU10SS0253C	960	-	-
32A	2	-	-	AU10SS0323C	960	-	-
40A	2	-	-	AU10SS0403C	1545	-	-
50A	2	-	-	AU10SS0503C	1545	-	-
63A	2	-	-	AU10SS0633C	1545	-	-
TPN							
0.5A	4	-	-	AU10ST0E53C	2520	-	-
1A	4	-	-	AU10ST0013C	2520	-	-
1.6A	4	-	-	AU10ST1E63C	2520	-	-
2A	4	-	-	AU10ST0023C	2520	-	-
3A	4	-	-	AU10ST0033C	2520	-	-
4A	4	-	-	AU10ST0043C	2520	-	-
5A	4	-	-	AU10ST0053C	2520	-	-
6A	4	-	-	AU10ST0063C	2115	-	-
10A	4	-	-	AU10ST0103C	2115	-	-
16A	4	-	-	AU10ST0163C	2115	-	-
20A	4	-	-	AU10ST0203C	2115	-	-
25A	4	-	-	AU10ST0253C	2115	-	-
32A	4	-	-	AU10ST0323C	2115	-	-
40A	4	-	-	AU10ST0403C	3055	-	-
50A	4	-	-	AU10ST0503C	3055	-	-
63A	4	-	-	AU10ST0633C	3055	-	-

Note: Standard Pack Quantity for MCB : SP - 12 Nos., DP/SPN - 6 Nos., TP - 4 Nos., FP/TPN - 3 Nos.

MCBs (Miniature Circuit Breakers) : 80A-125A [8536]

Range Highlights

- › Short circuit Breaking Capacity - 15kA (IEC 60947-2, EN 60947-2)
- › C & D Characteristics
- › Available in SP, DP, TP and FP
- › Suitable for Isolation
- › Protection Degree - IP 20
- › Availability of wide Range of Site Mountable Accessories



Rating	Modules 1 Mod = 17.5 mm	C Curve Cat. No.	M.R.P. (₹) Per Unit	D Curve Cat. No.	M.R.P. (₹) Per Unit
Single Pole (SP)					
80A	1.5	AU15S10803C	2710	AU15S10803D	3085
100A	1.5	AU15S11003C	3035	AU15S11003D	3450
125A	1.5	AU15S11253C	3265	AU15S11253D	3730
Double Pole (DP)					
80A	3	AU15S20803C	6005	AU15S20803D	6835
100A	3	AU15S21003C	6405	AU15S21003D	7285
125A	3	AU15S21253C	7050	AU15S21253D	8015
Three Pole (TP)					
80A	4.5	AU15S30803C	9475	AU15S30803D	10790
100A	4.5	AU15S31003C	10105	AU15S31003D	11485
125A	4.5	AU15S31253C	11210	AU15S31253D	12740
Four Pole (FP)					
80A	6	AU15S40803C	12375	AU15S40803D	14050
100A	6	AU15S41003C	12870	AU15S41003D	14645
125A	6	AU15S41253C	14575	AU15S41253D	16565

CERTIFIED TO LEAD, TRUSTED FOR SAFETY.



BIS-Certified HR MCBs Range - 80A, 100A & 125A

RCCBs (Residual Current Circuit Breakers) [8536]

Range Highlights*

- › Conforms to IEC 61008-1, EN 61008-1, IS 12640-1
- › Wide Range of Current Ratings - 16A to 100A
- › Precise Sensitivities for variety of applications - from 10mA to 500mA
- › 2P & 4P versions
- › Suitable for Isolation
- › Protection Degree - IP 20
- › Availability of wide Range of Site Mountable Accessories
- › Available in
 - » Type AC : For standard AC installations
 - » Type Adi : Suitable for AC + Pulsating DC (Type A) + Harmonics

Type-AC



Rating	Sensitivity	Modules 1 Mod = 17.5 mm	CAT Nos.	M.R.P. (₹) Per Unit
2P AC				
16A	10mA	2	AURAC201601	6310
25A	10mA	2	AURAC202501	6855
	30mA	2	AURAC202503	3540
	100mA	2	AURAC202510	3755
	300mA	2	AURAC202530	3755
	500mA	2	AURAC202550	4580
40A	30mA	2	AURAC204003	4050
	100mA	2	AURAC204010	4370
	300mA	2	AURAC204030	4370
	500mA	2	AURAC204050	5235
63A	30mA	2	AURAC206303	4920
	100mA	2	AURAC206310	5145
	300mA	2	AURAC206330	5145
	500mA	2	AURAC206350	5530
80A	30mA	2	AURAC208003	8030
	100mA	2	AURAC208010	8085
	300mA	2	AURAC208030	8085
100A	30mA	2	AURAC210003	8760
	100mA	2	AURAC210010	8830
	300mA	2	AURAC210030	8830



Rating	Sensitivity	Modules 1 Mod = 17.5 mm	CAT Nos.	M.R.P. (₹) Per Unit
4P AC				
25A	30mA	4	AURAC402503	4720
	100mA	4	AURAC402510	5010
	300mA	4	AURAC402530	5010
	500mA	4	AURAC402550	6020
40A	30mA	4	AURAC404003	4765
	100mA	4	AURAC404010	5080
	300mA	4	AURAC404030	5080
63A	30mA	4	AURAC406303	6105
	100mA	4	AURAC406310	5470
	300mA	4	AURAC406330	5820
80A	30mA	4	AURAC408003	5820
	100mA	4	AURAC408010	6235
	300mA	4	AURAC408030	9065
100A	30mA	4	AURAC408050	9140
	100mA	4	AURAC410003	9140
	300mA	4	AURAC410010	9710
	500mA	4	AURAC410030	9655
100A	30mA	4	AURAC410050	9720
	100mA	4	AURAC410010	9720
	300mA	4	AURAC410030	9720
500mA	4	AURAC410050	10010	

Type-Adi



Rating	Sensitivity	Modules 1 Mod = 17.5 mm	CAT Nos.	M.R.P. (₹) Per Unit
2P Adi				
25A	30mA	2	AURAD202503	5385
	100mA	2	AURAD202510	5630
	300mA	2	AURAD202530	5630
40A	30mA	2	AURAD204003	5715
	100mA	2	AURAD204010	5805
	300mA	2	AURAD204030	5805
63A	30mA	2	AURAD206303	6685
	100mA	2	AURAD206310	6810
	300mA	2	AURAD206330	6810
100A	30mA	2	AURAD210003	9875



Rating	Sensitivity	Modules 1 Mod = 17.5 mm	CAT Nos.	M.R.P. (₹) Per Unit
4P Adi				
25A	30mA	4	AURAD402503	6510
	100mA	4	AURAD402510	6635
	300mA	4	AURAD402530	6635
40A	30mA	4	AURAD404003	6760
	100mA	4	AURAD404010	6865
	300mA	4	AURAD404030	6865
63A	30mA	4	AURAD406303	7360
	100mA	4	AURAD406310	7515
	300mA	4	AURAD406330	7515
100A	30mA	4	AURAD410003	11725
	100mA	4	AURAD410010	11725
	300mA	4	AURAD410030	11725

*For technical details, please contact nearest branch office

RCBOs (Residual Current Breaker with Overcurrent Protection) [8536]

Range Highlights*

- › Conforms to IEC 61009-1, IS 12640-2, EN 61009-1
- › Short circuit Breaking Capacity - 10kA
- › Precise Sensitivities for a variety of applications
 - › from 10mA to 300mA
- › Suitable for Isolation

Type-AC

Rating	Sensitivity	Modules 1 Mod = 17.5 mm	CAT Nos.	M.R.P. (₹) Per Unit
2P AC				
6A	10mA	2	AUF3C200601	4980
	30mA	2	AUF3C200603	4980
	100mA	2	AUF3C200610	5085
	300mA	2	AUF3C200630	5145
10A	10mA	2	AUF3C201001	4980
	30mA	2	AUF3C201003	4980
	100mA	2	AUF3C201010	5085
	300mA	2	AUF3C201030	5145
16A	10mA	2	AUF3C201601	4980
	30mA	2	AUF3C201603	4980
	100mA	2	AUF3C201610	5085
	300mA	2	AUF3C201630	5145
20A	30mA	2	AUF3C202003	4980
	100mA	2	AUF3C202010	5085
	300mA	2	AUF3C202030	5145
25A	30mA	2	AUF3C202503	4980
	100mA	2	AUF3C202510	5085
	300mA	2	AUF3C202530	5145
32A	30mA	2	AUF3C203203	4980
	100mA	2	AUF3C203210	5085
	300mA	2	AUF3C203230	5145
40A	30mA	2	AUF3C204003	4980
	100mA	2	AUF3C204010	5085
	300mA	2	AUF3C204030	5145
63A	30mA	4	AUF3C206303	5940
	100mA	4	AUF3C206310	6300
	300mA	4	AUF3C206330	6350
4P AC				
16A	30mA	7.5	AUF3C401603	5370
	100mA	7.5	AUF3C401610	5980
	300mA	7.5	AUF3C401630	6100
20A	30mA	7.5	AUF3C402003	5370
	100mA	7.5	AUF3C402010	5980
	300mA	7.5	AUF3C402030	6100
25A	30mA	7.5	AUF3C402503	5370
	100mA	7.5	AUF3C402510	5980
	300mA	7.5	AUF3C402530	6100
32A	30mA	7.5	AUF3C403203	5545
	100mA	7.5	AUF3C403210	5985
	300mA	7.5	AUF3C403230	6115
40A	30mA	7.5	AUF3C404003	5635
	100mA	7.5	AUF3C404010	5985
	300mA	7.5	AUF3C404030	6135
63A	30mA	7.5	AUF3C406303	6750
	100mA	7.5	AUF3C406310	6875
	300mA	7.5	AUF3C406330	6875
80A	30mA	12	AUF3C408003	25685
	100mA	12	AUF3C408010	26260
	300mA	12	AUF3C408030	26260
100A	30mA	12	AUF3C410003	27460
	100mA	12	AUF3C410010	28115
	300mA	12	AUF3C410030	28115



- › Availability of wide Range of Site Mountable Accessories
- › Available in
 - › Type AC: For standard AC installations
 - › Type Adi: Suitable for AC + Pulsating DC (Type A) + Harmonics

Type-Adi

Rating	Sensitivity	Modules 1 Mod = 17.5 mm	CAT Nos.	M.R.P. (₹) Per Unit
2P Adi				
6A	30mA	2	AUF3D200603	6600
	100mA	2	AUF3D200610	7265
	300mA	2	AUF3D200630	7540
10A	30mA	2	AUF3D201003	6600
	100mA	2	AUF3D201010	7265
	300mA	2	AUF3D201030	7540
16A	30mA	2	AUF3D201603	6600
	100mA	2	AUF3D201610	7265
	300mA	2	AUF3D201630	7540
20A	30mA	2	AUF3D202003	6600
	100mA	2	AUF3D202010	7265
	300mA	2	AUF3D202030	7540
25A	30mA	2	AUF3D202503	6600
	100mA	2	AUF3D202510	7265
	300mA	2	AUF3D202530	7540
32A	30mA	2	AUF3D203203	6600
	100mA	2	AUF3D203210	7265
	300mA	2	AUF3D203230	7540
40A	30mA	2	AUF3D204003	6600
	100mA	2	AUF3D204010	7265
	300mA	2	AUF3D204030	7540
63A	30mA	4	AUF3D206303	7665
	100mA	4	AUF3D206310	8110
	300mA	4	AUF3D206330	8180
4P Adi				
16A	30mA	7.5	AUF3D401603	6925
	100mA	7.5	AUF3D401610	7705
	300mA	7.5	AUF3D401630	7860
20A	30mA	7.5	AUF3D402003	6925
	100mA	7.5	AUF3D402010	7705
	300mA	7.5	AUF3D402030	7860
25A	30mA	7.5	AUF3D402503	6925
	100mA	7.5	AUF3D402510	7705
	300mA	7.5	AUF3D402530	7860
32A	30mA	7.5	AUF3D403203	7150
	100mA	7.5	AUF3D403210	7710
	300mA	7.5	AUF3D403230	7870
40A	30mA	7.5	AUF3D404003	7255
	100mA	7.5	AUF3D404010	7710
	300mA	7.5	AUF3D404030	7905
63A	30mA	7.5	AUF3D406303	8695
	100mA	7.5	AUF3D406310	8870
	300mA	7.5	AUF3D406330	8870
80A	30mA	12	AUF3D408003	25685
	100mA	12	AUF3D408010	26260
	300mA	12	AUF3D408030	26260
100A	30mA	12	AUF3D410003	27460
	100mA	12	AUF3D410010	28115
	300mA	12	AUF3D410030	28115

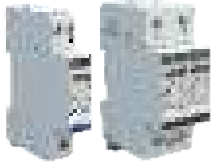
*For technical details, please contact nearest branch office

Indicating Lights [8531]



Description	Modules 1 Mod = 17.5 mm	Cat. No.	M.R.P. (₹) Per Unit
RED	1	AUIL01RED00	1105
YELLOW	1	AUIL01YEL00	1105
BLUE	1	AUIL01BLU00	1105
GREEN	1	AUIL01GRE00	1105
RED-YELLOW-BLUE	1	AUIL01RYB00	1345

SPDs (Surge Protection Devices) [8536]



Range Highlights

- › Conforms to IEC 61643-11
- › Available in Type 2 and Type 1+2
- › Type 2 : Protection against indirect lightning and switching surges
 - » Maximum Discharge Current - I_{max} up to 70kA
- › Type 1+2 : Protection against direct and indirect lightning surges
 - » Maximum Discharge Current - I_{max} up to 100kA

800V Solar Application

Description	Configuration	Modules 1 Mod = 17.5 mm	Voltage (Uc)	Cat. No.	M.R.P. (₹) Per Unit
Type 2, I _{max} 40kA	3P	4	1500	AUSP023P40-1500	12500
Type 1+2, I _{imp} 12.5kA	3P	5	1360	AUSP123P50-1360	41430
Type 1+2, I _{imp} 12.5kA	3P	4	880	AUSP123P50-880	30000



440V Application (Common + Differential Mode)

Description	I _{max}	Configuration	Modules 1 Mod = 17.5 mm	Cat. No.	M.R.P. (₹) Per Unit
Type 1+2, I _{imp} 12.5kA	50kA	1P+N	2	AUSP121PN50D	10545
		3P+N	4	AUSP123PN50D	20195
Type 2	40kA	1P+N	1	AUSP021PN40D	6590
		3P+N	2	AUSP023PN40D	13170
Type 2	15kA	1P+N	1	AUSP021PN15D	5270
		3P+N	2	AUSP023PN15D	10370
Type 1+2, I _{imp} 8kA	100kA	1P+N	2	AUSP121PN100D	9480
		3P+N	4	AUSP123PN100D	18625
Type 2	70kA	1P+N	2	AUSP021PN70D	10350
		3P+N	4	AUSP023PN70D	17240
Type 2	15kA	1P+N	1	AUSP021PN15*	5270

*Available till stocks last

SPD Cartridges

Description	Cat. No.	M.R.P. (₹) Per Unit
Cartridge for AUSP021PN15D	AUSC021PN15D	2640
Cartridge for AUSP021PN40D	AUSC021PN40D	3290
Cartridge for AUSP021PN70D / AUSP023PN70D	AUSC021PN70D	3520
Cartridge for AUSP023PN15D [#]	AUSC023PN15D	3455
Cartridge for AUSP023PN40D [#]	AUSC023PN40D	4395
Cartridge for AUSP121PN100D / AUSP123PN100D	AUSC121PN100D	5270
Cartridge for AUSP121PN50D / AUSP123PN50D	AUSC121PN50D	5690
Cartridge for AUSP023PN15D [#]	AUSC023PN15DG	4005
Cartridge for AUSP023PN40D [#]	AUSC023PN40DG	4180

[#]For technical details, please contact nearest branch office

Accessories [8538]

All Half Module and One Module Accessories are common for 80A-125A MCBs, RCBOs and Adi RCCBs

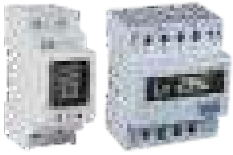


Description	Configuration	Modules 1 Mod = 17.5 mm	Voltage	CAT Nos.	M.R.P. (₹) Per Unit
Auxiliary Contact	1NO+1NC	0.5	240V AC, 24V DC	AUAXAC240	1005
AUX/TAC*	1NO+1NC	0.5	240V AC, 24V DC	AUATAC240	1180
HR AUX/TAC*	1NO+1NC	0.5	240V AC, 24V DC	AUATAC240HR	1180
Undervoltage	-	1	240V AC	AUUVAC240	2380
Release	-	1	24V DC	AUUVDC024	2380
Overvoltage Release	-	1	240V AC	AUOVAC240	2945
Shunt Release	-	1	240V AC	AUSRAC240	2730
	-	1	24V DC	AUSRDC024	2730
Padlock-Suitable for Lock Hasp 3.5 - 5 mm dia. max	Suitable for 1Pole=1Mod devices: RCCBs, RCBOs, Changeover Switches up to 40A			AUPD01	540
	Suitable for 1Pole-1.5Mod devices: MCBs 80A-125A, Changeover Switch 63A			AUPD02	610

Note: Standard Pack Quantity for Padlock - 2 Nos.

*For 80A-125A MCBs please contact nearest branch office

Energy Meters [9030]



Range Highlights

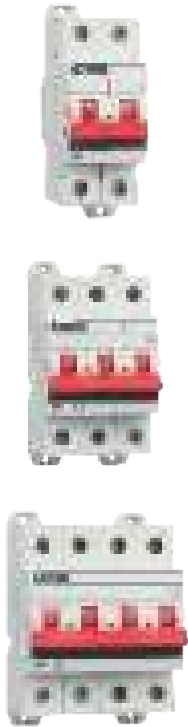
- › DIN mounting whole current operated meter
- › Accuracy Class 1.0
- › Inbuilt RS485 option
- › Parameters : Voltage, Current, kW, kWh, kVA, kVAh, RPM, Load hours, Interruptions

Description	Modules 1 Mod = 17.5 mm	Cat. No.	M.R.P. (₹) Per Unit
Single Phase - 60A	2	WD4010100000	2895
Three Phase - 80A	5	WD4020100000	6275
Single Phase - 60A (RS485)	2	WD4010110000	4285
Three Phase - 80A (RS485)	5	WD4020110000	9465

Isolators [8536]

Range Highlights

- › Suitable for Isolation as per IEC 60947-3, IS/IEC 60947-3
 - › Providing operational safety at the downstream
- › Comprehensive range suitable for various applications
- › Utilization Category of AC-22A
- › Suitability for Mounting Auxiliary Contact



Rating	Modules 1 Mod = 17.5 mm	CAT Nos.	M.R.P. (₹) Per Unit
Double Pole			
25A	2	AUI00202500	525
32A	2	AUI00203200	580
40A	2	AUI00204000	630
63A	2	AUI00206300	830
80A	2	AUI00208000	1010
100A	2	AUI00210000	1125
125A	2	AUI00212500	1280
Three Pole			
32A	3	AUI00303200	1015
40A	3	AUI00304000	1090
63A	3	AUI00306300	1280
80A	3	AUI00308000	1405
100A	3	AUI00310000	1465
125A	3	AUI00312500	1655
Four Pole			
32A	4	AUI00403200	1125
40A	4	AUI00404000	1390
63A	4	AUI00406300	1530
80A	4	AUI00408000	1685
100A	4	AUI00410000	1865
125A	4	AUI00412500	2050

Changeover Switches [8536]

Range Highlights

- › Conforms to IEC 60947-3 and IS/IEC 60947-3
- › Available in 3 positions (I-O-II) with centre off position
- › Utilization category AC-22A



Rating	Modules 1 Mod = 17.5 mm	Cat. No.	M.R.P. (₹) Per Unit	Rating	Modules 1 Mod = 17.5 mm	Cat. No.	M.R.P. (₹) Per Unit
Double Pole				Four Pole			
25A	2	AUC00202500	1710	40A	4	AUC00404000	4505
40A	2	AUC00204000	2615	63A	6	AUC00406300	5110
63A	3	AUC00206300	3045				

Time Switches [9107]



Description	Modules 1 Mod = 17.5 mm	CAT Nos.	M.R.P. (₹) Per Unit
Analog time switch	1	AUTS01ANA00*	5110
Analog time switch	3	AUTS03ANA00*	6215
Digital time switch	2	AUTS02DIG00*1	3955
Astro time switch	2	AUTS02AST00*1	6645
Digital time switch	2	67DDT0#	2430
Astro time switch	2	T2DDT7#	4635

*Available till stocks last

#Substitute products of 1 marked

Modular Contactors [8536]



Range Highlights

- › Wide Range of Current Ratings:
 - » 25A, 40A and 63A
- › Conforms to:
 - » IEC 61095, EN 61095
 - » IEC 60947-4-1, EN 60947-4-1
 - » IEC 60947-5-1
- › Protection Degree IP 20

Description (AC-1)	Modules 1 Mod = 17.5 mm	Cat. No.	M.R.P. (₹) Per Unit
25A-1NO	1	AUMC1002501	1900
25A-2NO	1	AUMC2002501	2380
40A-2NO	3	AUMC2004003	4075
40A-3NO	3	AUMC3004003	5840
40A-4NO	3	AUMC4004003	6850
63A-2NO+2NC	3	AUMC2206303	7240
63A-3NO	3	AUMC3006303	7420
63A-4NO	3	AUMC4006303	8170
Accessory [8538]			
Auxiliary Contact, 2NO	0.5	AUMCAUX240	1825

Single Phase - ACCL [8536]

Automatic Changeover with Current Limiter



Range Highlights

- › Conforms to IEC 60947-6, IEC 60947-3
- › Wide Range of Current Ratings
 - » (Generator side) - 1A to 30A
 - » (Electricity Board side) - 30A
- › RoHS compliant

Description EB/DG	Modules 1 Mod = 17.5 mm	CAT Nos.	M.R.P. (₹) Per Unit
30A/1A	4	AUCL01030001	2505
30A/1.5A	4	AUCL010301E5	2505
30A/2A	4	AUCL01030002	2505
30A/2.5A	4	AUCL010302E5	2505
30A/3A	4	AUCL01030003	2505
30A/4A	4	AUCL01030004	2505
30A/5A	4	AUCL01030005	2505
30A/6A	4	AUCL01030006	2505
30A/8A	4	AUCL01030008	2505
30A/10A	4	AUCL01030010	2505
30A/12A	4	AUCL01030012	2505
30A/15A	4	AUCL01030015	2505
30A/20A	4	AUCL01030020	2505
30A/30A	4	AUCL01030030*	2505

*Non-current limiting variant

Three Phase - ACCL [8536]

Automatic Changeover with Current Limiter



Range Highlights

- › Settable overload current limit at DG side
- › Separate power consumption monitoring for Mains & Genset
- › Settable overvoltage & undervoltage protection
- › Settable TPN or SPN mode at DG side
- › Protection against single phasing

Description (AC-1) EB/DG	Cat. No.	M.R.P. (₹) Per Unit
32A / 32A	AUCL03032032	11385
40A / 32A	AUCL03040032	11730
40A / 40A	AUCL03040040	12700
50A / 50A	AUCL03050050	18095
63A / 50A	AUCL03063050	19970
63A / 63A	AUCL03063063	22620
80A / 80A	AUCL03080080	34475
125A / 125A	AUCL03125125	58035

For 3 Phase ACCL programming video please scan the QR code or click here



AU-COM: Communication Solution [8538]

Range Highlights

- › Can be deployed for AU range of MCBs, RCCBs, RCBOs & energy meters
- › Capable of local and remote status monitoring of final distribution products- ON, OFF and TRIP
- › With AU-COM and modular contactors AU-MC, remote controlling of the load can be achieved
- › The convertor module converts RS 485 data signals from AU-COM into SCADA-compatible ethernet signals
- › For remote monitoring and metering of energy, single-phase and three-phase energy meters with RS 485 converters module can be Used



Description	Modules 1 Mod = 17.5 mm	CAT Nos.	M.R.P. (₹) Per Unit
AU-COM communication module	1.5	AUCOM0402	*
AU-CON convertor module	1.5	AUCON0403	*

*Please contact nearest branch office for details.

General Terms

All prices are on Maximum retail price basis inclusive of all duties, GST & any other tax as applicable.

Warranty Policy

All products listed in the price list are covered by a warranty against manufacturing defects for a period of 18+ months from the date of purchase. For Lauritz Knudsen MCBs & Isolators mounted inside Lauritz Knudsen Distribution Boards, an extended warranty of 5 years is provided.

In the event of a defect due to faulty workmanship or other associated reasons, we will, at our discretion, remedy the defect or replace the faulty parts or the entire product as soon as possible, free of cost.

However, the warranty is subject to proper usage, efficient maintenance, and does not cover defects arising from fire, accidents, inefficient maintenance, faulty operation, or deliberate or accidental damage. It also does not cover damage to power electronic components such as thyristors & IGBTs, which primarily fail due to overtemperature & over-voltage. Users need to take adequate precautions to eliminate these conditions. Manufacturer shall not be responsible & liable for any special, incidental, social or consequential (including lost profits) loss, consequential damages, injury or damages (punitive) of any kind solely attributable to defect or failure of its products. Manufacturer shall not be liable in any manner for the issue of or failure in the performance of other equipment the product is attached to.

Note: We are committed to maintaining our product warranty in line with our standard terms for both the Lauritz Knudsen Brand and the L&T Switchgear brand. The change in brand will not alter our standard warranty terms or any applicable extended warranty terms.

Furthermore, we will ensure that spares and after-sales support remain available throughout the entire product life cycle, regardless of whether the products are under the L&T Switchgear brand or the Lauritz Knudsen Brand

Comprehensive Service Support

Lauritz Knudsen Electrical & Automation has over seven decades of experience in providing after sales service for low voltage distribution system in every type of industry & commercial complex in India

Lauritz Knudsen Electrical & Automation offers the following services, partnering you in your maintenance of low voltage distribution products:

- › Regular Maintenance
- › Preventive Maintenance Programme
- › On Call
- › Annual Maintenance Contract
- › Product Support for Managing Obsolescence-

Switchgear Training Centres



Pune

Lauritz Knudsen Electrical & Automation
Switchgear Training Centre
T-156 / 157, MIDC,
Bhosari, Pune - 411 026
Tel: 020-2712 0037 / 2712 0653
E-mail: STC-PUNE@LK-EA.com



Lucknow

Lauritz Knudsen Electrical & Automation
Switchgear Training Centre
C-6 & 7, UPSIDC,
P. O. Sarojininagar,
Lucknow - 226 008
Tel: 97944 54455
E-mail: STC-LUCKNOW@LK-EA.com



Delhi

Lauritz Knudsen Electrical & Automation
Switchgear Training Centre
A-25, Imperia Complex, First Floor
Mohan Cooperative Industrial Estate
Near Sarita Vihar / Mohan Estate Metro Station
Main Mathura Road, New Delhi - 110044
Tel: 9899020306 / 9720186726 / 9560845094
E-mail: STC-DELHI@LK-EA.com



Kolkata

Lauritz Knudsen Electrical & Automation
Switchgear Training Centre,
2nd Floor, Block BN3, Sector V,
Salt Lake City,
Kolkata - 700091, West Bengal
Tel: 7738717893 / 7797795567
E-mail: STC-KOLKATA@LK-EA.com



Vadodara

Lauritz Knudsen Electrical & Automation
Switchgear Training Centre
Behind L&T Knowledge City,
Near Village Ankhol,
Vadodara - 390019
Tel: 0265 6147805 / 6147808
E-mail: STC-VADODARA@LK-EA.com



Coonor

Lauritz Knudsen Electrical & Automation
Switchgear Training Centre
Ooty-Coonor Main Road
Yellanahalli P.O.,
The Nilgiris - 643 243
Tel: 0423 251 7107
E-mail: STC-COONOOR@LK-EA.com

Electrical Standard Products (ESP) Offices

HEAD OFFICE

Lauritz Knudsen Electrical & Automation, A/600, Shil-Mahape Road, TTC Industrial Area, MIDC Thane, Navi Mumbai, 400 710, Maharashtra.

Tel: 022-6722 6300 | Fax: 022-6705 1112 | e-mail: CIC@LK-EA.com

BRANCH OFFICES

Lauritz Knudsen Electrical & Automation
C-201, The First Commercial Complex,
B/S Keshavbaug Party Plot, Vastrapur,
Ahmedabad - 380 015
Phone No: 022-6932 7800
e-mail: CIC@LK-EA.com

Lauritz Knudsen Electrical & Automation
Shri Daneshwari, 1st Floor,
Plot No. 17, 2nd Cross, Near Old Income
Tax Office Road, Vidyanagar,
Hubballi - 580 021
Phone No: 022-6932 7800
e-mail: CIC@LK-EA.com

Lauritz Knudsen Electrical & Automation
No.10, Fortuna Towers, 2nd Floor,
Rana Pratap Marg, Near NBRI,
Lucknow - 226 001
Phone No: 022-6932 7800
e-mail: CIC@LK-EA.com

Lauritz Knudsen Electrical & Automation
A06/A07, Second Floor,
Grand Chandra Complex, Frazer Road
Patna - 800 001
Phone No: 022-6932 7800
e-mail: CIC@LK-EA.com

Lauritz Knudsen Electrical & Automation
Wework Central, #36 Infantry Road,
Bengaluru - 560 001
Phone No: 022-6932 7800
e-mail: CIC@LK-EA.com

Lauritz Knudsen Electrical & Automation
AWFIS Space Solutions, Prestige Phoenix,
4th floor, 1405, Umanagar, Begumpet,
Hyderabad - 500 016
Phone No: 022-6932 7800
e-mail: CIC@LK-EA.com

Lauritz Knudsen Electrical & Automation
El Dorado Building, 3rd Floor, 6,
Venkatraman Street, Chinna Chokkikulam,
Madurai - 625 002
Phone No: 022-6932 7800
e-mail: CIC@LK-EA.com

Lauritz Knudsen Electrical & Automation
UrbanWrk, 5th Floor, Sai Radhe,
Raja Bahadur Mill Road, Behind Hotel
Grand Sheraton, Sangamwadi
Pune - 411 001
Phone No: 022-6932 7800
e-mail: CIC@LK-EA.com

Lauritz Knudsen Electrical & Automation
Workloop Unit-612, 6th Floor,
Esplanade One, Rasulgarh,
Bhubaneswar, Odisha-751010
Phone No: 022 6932 7800
e-mail: CIC@LK-EA.com

Lauritz Knudsen Electrical & Automation
Workie, 214 - 2nd Floor,
Apollo Premier, PU-4,
Scheme No. 54, Vijay Nagar Square,
Indore - 452 010
Phone No: 022-6932 7800
e-mail: CIC@LK-EA.com

Lauritz Knudsen Electrical & Automation
Bestech Business Park,
Tower - A, 2nd floor, Sector - 66
Mohali - 160059
Phone No: 022-6932 7800
e-mail: CIC@LK-EA.com

Lauritz Knudsen Electrical & Automation
Office No. 211 & 212, Pithalia Plaza,
KK Road, Near Fafadih Chowk,
Raipur - 492 001
Phone No: 022-6932 7800
e-mail: CIC@LK-EA.com

Lauritz Knudsen Electrical & Automation,
The Executive Centre
Level 8, Olympia Teknos Park
28, SIDCO Industrial Estate, Guindy,
Chennai - 600 032, Tamil Nadu,
Phone No: 022-6932 7800
e-mail: CIC@LK-EA.com

Lauritz Knudsen Electrical & Automation
Office No. 430, 4th Floor,
Jaipur Electronic Market, Riddhi Siddhi,
Gopalpura Bypass,
Jaipur - 302 018
Phone No: 022-6932 7800
e-mail: CIC@LK-EA.com

Lauritz Knudsen Electrical & Automation
TC II, Tower B, PRIMA BAY Gate No. 5,
Saki Vihar Road Powai,
Mumbai - 400 072
Phone No: 022-6932 7800
e-mail: CIC@LK-EA.com

Lauritz Knudsen Electrical & Automation,
DevX 4th Floor, A Wing, Om 9 Square,
150 Ft Ring Road, Near Nana Mava Circle,
Opp Silver Heights,
Rajkot - 360 001
Phone No: 022-6932 7800
e-mail: CIC@LK-EA.com

Lauritz Knudsen Electrical & Automation
Playworkz Coworking Space
43 & 44, 3rd Cross,
Bharathy Colony, Peelamedu,
Coimbatore - 641 004
Phone No: 022-6932 7800
e-mail: CIC@LK-EA.com

Lauritz Knudsen Electrical & Automation
GDR Siddha, Ground Floor, N Road
Bistupur, Opposite St. Mary's Church,
Jamshedpur - 831 001
Phone No: 022-6932 7800
e-mail: CIC@LK-EA.com

Lauritz Knudsen Electrical & Automation
Unnati Building, 2nd Floor,
Automation Campus, A-600, TTC Industrial
Area Shil-Mahape Road, Mahape,
Navi Mumbai - 400 710
Phone No: 022-6932 7800
e-mail: CIC@LK-EA.com

Lauritz Knudsen Electrical & Automation
10th Floor, Titaanium Business,
Bhimrad Road, Althan
Surat - 395 017
Phone No: 022-6932 7800
e-mail: CIC@LK-EA.com

Lauritz Knudsen Electrical & Automation
3rd Floor, 1&2 Vijay Park,
Main Chakrata Road, Opp. Anandam,
Near Ballapur chowk,
Dehradun - 248 001
Phone No: 022-6932 7800
e-mail: CIC@LK-EA.com

Lauritz Knudsen Electrical & Automation
Business Communication Centre
2nd Floor, Chiramel Chambers,
Kurisupally Road, Ravipuram,
Kochi - 682 015
Phone No: 022-6932 7800
e-mail: CIC@LK-EA.com

Lauritz Knudsen Electrical & Automation
M1 & M2, Mezzanine Floor,
Himalaya Excellency,
Plot No. C-47, Pratap Nagar Square,
Nagpur - 440 022
Phone No: 022-6932 7800
e-mail: CIC@LK-EA.com

Lauritz Knudsen Electrical & Automation
11th Floor, Block-D, Notus IT Park,
Sarabhai Campus, Bhailal Amin Marg,
Vadodara - 390 023
Phone No: 022-6932 7800
e-mail: CIC@LK-EA.com

Lauritz Knudsen Electrical & Automation
Ground Floor, B-27,
Biplab Rashbihari Sarani,
Sector 2A, Bidhan Nagar,
Durgapur - 713 212
Phone No: 022-6932 7800
e-mail: CIC@LK-EA.com

Lauritz & Knudsen Electrical & Automation,
207, 2nd floor, Revolution Complex,
Station Road, E Ward,
Next to Pedestrian Bridge,
Kolhapur - 416 001
Phone No: 022-6932 7800
e-mail: CIC@LK-EA.com

Lauritz Knudsen Electrical & Automation,
3rd floor, Uttam Tower by Viraj Estate,
Sharanpur Road,
Nasik - 422 002
Phone No: 022-6932 7800
e-mail: CIC@LK-EA.com

Lauritz Knudsen Electrical & Automation
Naga Chambers, 3rd Floor, D/No. 12-1-16,
Plot No. 49, Survey No. 1051, Waltair Main Road,
Visakhapatnam - 530 002
Phone No: 022-6932 7800
e-mail: CIC@LK-EA.com

Lauritz Knudsen Electrical & Automation
6th Floor, Exotica Greens, A Block, 191,
R G Baruah Road, Guwahati Central,
Guwahati - 781 005
Phone No: 022-6932 7800
e-mail: CIC@LK-EA.com

Lauritz Knudsen Electrical & Automation
2nd Floor, BN3, Salt Lake, Sector-V,
Kolkata - 700 091
Phone No: 022-6932 7800
e-mail: CIC@LK-EA.com

Lauritz Knudsen Electrical & Automation
A-25, 1st Floor, Imperia Complex,
Mohan Corporative Industrial Estate,
Near Sarita Vihar Metro Station,
Mathura Road,
New Delhi - 110 044
Phone no: 022-6932 7800
e-mail: CIC@LK-EA.com

Product improvement is a continuous process. For the latest information and special application, please contact any of our offices listed here. Product photographs shown for representative purpose only.



Lauritz Knudsen Electrical & Automation, Electrical Standard Product

A/600, Shil-Mahape Road, TTC Industrial Area, MIDC Thane, Navi Mumbai, 400 710, Maharashtra, Phone No: 022-6722 6300 | Web: www.LK-EA.com

Customer Interaction Center (CIC)

Phone no: 022-6932 7800

Web: www.LK-EA.com | e-mail: CIC@LK-EA.com