

Netscale 48

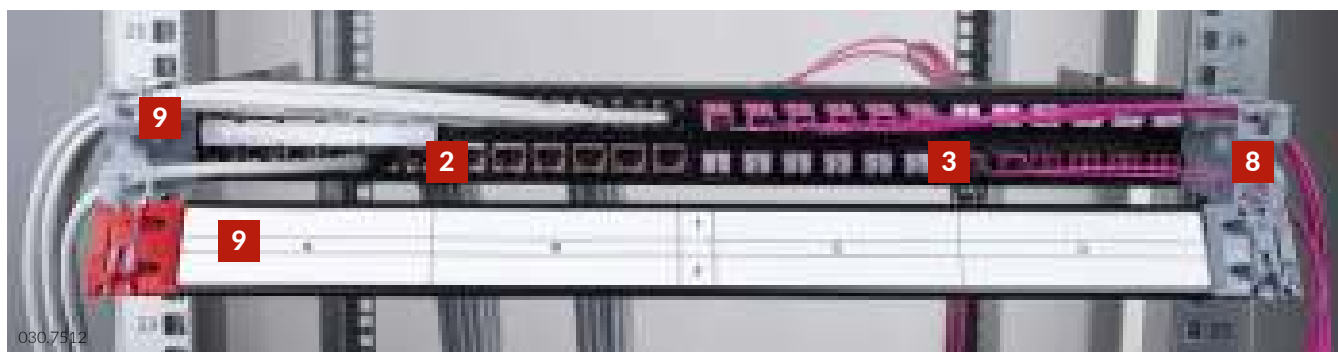
Perfect Flexibility

Mixed Media Patch Panel

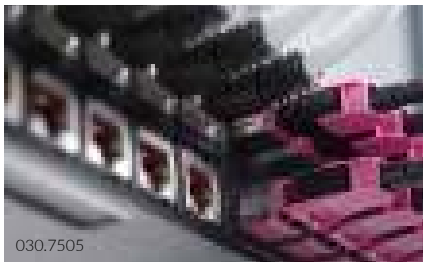
Netscale 48 Mixed Media Patch Panel

Main features and advantages

Data center infrastructure, airports, public buildings, co-locations or in-house high-security infrastructure at banks and insurances or in the chemical and pharmaceutical industry – Netscale 48 covers the whole spectrum. The most flexible mixed media patch panel with the best cable management system combines everything and offers everything on a single height unit in the rack. Thus, it fulfills the most diverse wishes with ease.



- | | | |
|---|---|--|
| 1 Cassette system with space saving handle | 5 Rear cable management system (RCS) | 9 Labeling options (1x inside door, 1x label holder, blind cover) |
| 2 Copper connectivity | 6 Copper cable guides | 10 Adjustable cable management system rear or side (ACS) |
| 3 Fiber connectivity | 7 FCA divider clip for FO | |
| 4 Front cable manager (FCM) | 8 intelIPhy ready | |



030.7505

Extensible in copper and fiber optic technology

Thanks to intelligent design, the patch panel enables continuous expansion during operation without interruption. It supports LC, MPO, SC and E2000 as well as Cat. 6, Cat. 6A and Cat. 8 copper connectivity. The integrated and optional front and rear cable manager keeps things tidy and the labeling options provide the necessary clarity. Optional identification is also possible with the intliPhy AIM system.



030.7506



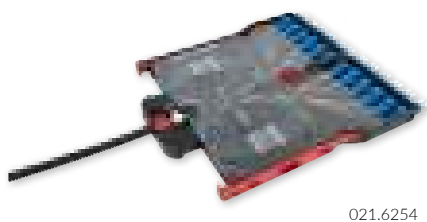
030.7509



030.7510

Cassette

A uniform cassette allows use in all insertion positions regardless of whether straight or angled patch panel. The central arrangement with good grip recess helps with unlocking and locking.



021.6254

Front cable manager (FCM)

The front cable management system is hidden behind a closed door. A tidy affair. Practical labeling fields on the inside of the door ensure clear identification.



030.7520

Adjustable cable management system (ACS)

Optional cable management elements and cable shelves ensure perfect order in the rack. The depth-adjustable sliding profiles fit into every rack.



030.7511

FO splice cassette

FO splice cassettes (only for straight RF) enable classic termination in the rack. Generous space allows comfortable working and still maintains great flexibility with a quarter of a height unit.

Cu trunk with cassette

Pre-assembled copper trunk cables with cassette ensure fast commissioning and maximum ease of handling. Factory-tested quality ready for immediate use.

Accessories

Extensive accessories for labeling, color marking, cable management or automatic infrastructure management are available in the usual well thought-out R&M quality. As individual as your application.

Netscale 48 Mixed Media Patch Panel

Your most important benefits



Great flexibility

- Modular cassette system so that the insertion positions can be freely selected
- Copper and fiber per cassette enables gradual expansion
- Labeling option on the panel, in the front door or for even more efficiency with the automated infrastructure management system intelIPhy



Optimal organization

- Patch panel housing in straight or angled version to fit optimally into your cable organization
- Front and rear cable management systems for quick and easy setup
- intelIPhy can be easily retrofitted at any time during operation, even when fully extended, thus eliminating downtime



High density

- Only one height unit per patch panel, thus 48 ports of any type can be reached
- New FO adapters allow even higher compressions for even more space savings

Complementary products



intelIPhy Monitor

Flexible, modular cable management on a new level and in a new dimension of automated infrastructure management.



Pre-terminated copper trunk cables

Various cable types and connection module combinations for quick and reliable commissioning with minimum installation effort.



FO cable assemblies

Plug and play together with our FO modules for even faster commissioning or expansion of existing capacities.



Connectivity components

FO adapters and copper connection modules in various designs for optimum connectivity.



We are represented by almost 3000 qualified partners worldwide.
Find your local partner at: www.rdm.com

