

**EMERGENCY ESCAPE LIGHTING
SOLUTIONS
&
FIRE SAFETY SIGNAGES**



ABOUT US

PROLITE is a recognized and globally renowned manufacturer and supplier of Emergency Egress Route Lighting Systems and related products. Prolite boasts a wide range of models and is the first company in the country to be an ISO 9001:2015 Certified in the fields of R&D, Manufacturing, Marketing and Maintenance of Emergency Lighting Solutions. The design excellence of Prolite's products are achieved through sustained and periodical in-house Research and Development.

Prolite has evolved with the times and kept in step with rapidly changing threat perceptions and security protocols. Today, Prolite is capable of providing customer-specific solutions through its products range globally.

Prolite's R & D team has designed its new modular light series with all this in mind.



STANDARDS & WE

Indian Standards & Codes

- National Building Code of India (NBC 2016)
- National Lighting Code (NLC SP 72 - 2010)
- IS 9457:2005 Code of Practice for Safety Colors and Safety Signs
- IS 10322 Part 5: Sec 8: 2013
- IS 13716:1993 Code of Practice for Fire Safety in Hotels
- IS 9583:1981 Part 5: Sec 8
- IS 12407:1988 Graphic Symbols for Fire Protection Plans
- IS 1644:1988 Code of Practice for Fire Safety of Buildings
- IS 1646 Code of Practice for Fire Safety of Buildings

International Standards

- IEC Standard 60529 Classifies and Rates the Degree of Protection
- EN 50172:2006 Emergency Escape Lighting Systems

WHY CHOOSE US

TABLE OF CONTENTS

- ▶ Ceiling Mounted Escape Emergency Lights
- ▶ Ceiling Mounted Escape SQ Emergency Lights
- ▶ Ceiling Mounted Escape CYLINDRICAL Emergency Lights
- ▶ Pathway Indicator Emergency Lights - Emergency Rechargeable Bulkhead
- ▶ Pathway Indicator Emergency Lights Passerelle - Walkway Flameproof Emergency Light
- ▶ Conventional Exit Lights
- ▶ Sleek Surface Mounted Exit Lights
- ▶ Multi-Utility Exit Lights
- ▶ Weather Proof Emergency Exit Lights
- ▶ Industrial Egress Emergency Lights
- ▶ Prolite Emergency Conversion Module (PECM)
- ▶ Flameproof Emergency Lights
- ▶ Fire Equipment Identifier Light (FEIL)
- ▶ Rechargeable Flood Light
- ▶ Portable Rechargeable Tower Light
- ▶ ELEGANTE SERIES Emergency Way Finding Signages



AUTOGLO PRODUCT MATERIAL

Autoglo Signs are manufactured using the best photoluminescent materials and conform to the latest international standards. We produce our photoluminescent signs using a wide range of materials.

Photoluminescent Materials

Flexyle Sheet (F) : Flexyle is a self-adhesive flexible sheet which can be fixed on any surface which is used for fixing on fire extinguisher or any other round and uneven surface where rigid cannot be used.

Rigid Sheet (R) : A robust and durable self-adhesive sheet which can be fixed on any surface most suitable for indoor signs.

Aluminum (A) : For use where industrial durability and quality is required for both indoor and outdoor.

Convenience

All AUTOGLO signages, unlike conventional signs, come with high-grade self-adhesive gumming. They do not require any drilling, screwing or adhesive. Simple peel off the backing paper and apply.



QUALITY TEST

Place an adhesive tape on the sign and peel off withing a short time. Autoglo will retain it's COLOUR - PRINT where as Non Standardized Signs will lose both.



TABLE OF CONTENTS

- ▶ Prohibition Safety Signs
- ▶ Safety Signs
- ▶ Direction Safety Signs
- ▶ Fire Equipment Safety Signs
- ▶ Mandatory Safety Signs
- ▶ Warning Safety Signs
- ▶ Combination Safety Signs
- ▶ General Safety Signs
- ▶ IMO Safety Control & IMO Safety Signs
- ▶ Passenger Vessel & Terminal Signs
- ▶ Evacuation Plans
- ▶ Aluminium Frames for Signages and Evacuation Plans
- ▶ Low Location Safety Marking Signs
- ▶ Auditorium Safety Marking Signs
- ▶ Photorefective Safety Signs
- ▶ Safety Potsers



HOW AUTOGLO IS DIFFERENT



PEL 1W LED NM/RDL 50 (CR)
(Also available in 3W)

- Non-Maintained
- 3 Hrs. Backup
- IP 20



PEL 1W LED NM/RDL (CR) 0A (CX) PLAST
(Also available in 3W)

- Non-Maintained
- 2 Hrs. Backup
- IP 20



PEL 1W LED NM/RDL (CR) PA (CX) PLAST
(Also available in 3W)

- Non-Maintained
- 2 Hrs. Backup
- IP 20



PEL 1W/3W LED NM/SDL (0A) PLAST
(Also available in Maintained Model)

- Non-Maintained
- 2 Hrs. Backup
- IP 42



PEL 1W/3W LED NM/SDL (PA) PLAST
(Also available in Maintained Model)

- Non-Maintained
- 2 Hrs. Backup
- IP 42



PEL LED NM/RDL CYLINDRICAL (0A) 90
(Available in 5W & 10W)

- Non-Maintained
- 3 Hrs. Backup
- IP 20



PEL LED NM/RDL CYLINDRICAL (PA) 90
(Available in 5W & 10W)

- Non-Maintained
- 3 Hrs. Backup
- IP 20



PEL LED 3W NM/BULKHEAD
(Also available in Maintained Model)

- Non-Maintained
- 3 Hrs. Backup
- IP 54/65



INFINITE SERIES
(Length: 2 ft | 6 ft | 10ft)

- Non-Maintained
- 3 Hrs. Backup
- IP 54/65



PEL LED E/NM CR (150) WALKWAY
(Also available in Maintained Model)

- Non-Maintained
- 3 Hrs. Backup
- IP 65



PEL LED E/NM | PEL LED E/M

- Non-Maintained
- 3 Hrs. Backup
- IP 20



PEL LED E/M(S)

- Maintained
- 3 Hrs. Backup
- IP 20



PEL LED E/M(S) PD

- Maintained
- 3 Hrs. Backup
- IP 20



PEL LED E/M(S) MU (SM)
(BIS Certified)

- Maintained
- 3 Hrs. Backup
- IP 20



PEL LED E/M(S) MU (V)
(BIS Certified)

- Maintained
- 3 Hrs. Backup
- IP 20



PEL LED E/M(S) MU (RM)
(BIS Certified)

- Maintained
- 3 Hrs. Backup
- IP 20



PEL LED E/NM (RM) | PEL LED E/M (RM)
(Also available in NE Model)

- Non-Maintained
- 3 Hrs. Backup
- IP 20



PEL LED E/NM/WP(1)
(Also available in Maintained Model)

- Non-Maintained
- 2 Hrs. Backup
- IP 65



PEL LED E/M(V)/SM WP(1)
(Also available in Recessed Model)

- Maintained
- 3 Hrs. Backup
- IP 65



PEL LED E/M(Q) | PEL LED E/M(Q) ULTRA

- Maintained
- 2 Hrs. Backup
- IP 20



PEL LED NM (300) | PEL LED 300 BULK(NM)

- Non-Maintained
- 3 Hrs. Backup
- IP 20



PEL LED NM (600)

- Non-Maintained
- 3 Hrs. Backup
- IP 20



PEL LED NM (1200)
(Also available in Maintained Model)

- Non-Maintained
- 3 Hrs. Backup
- IP 20



PEL LED 120 NM | PEL LED 220 NM

- Non-Maintained
- 3 Hrs. Backup
- IP 20



PEL LED M/SQ 600MM
(Also available in 36W | 38W | 40W)

- Maintained
- 3 Hrs. Backup
- IP 20



PEL LED NM/WP(1) | PEL LED M/WP(1)

- Non-Maintained | Maintained
- 3 Hrs. Backup
- IP 65



PEL LED 120 NM/SL | PEL LED 120 M/SL
(Available in 18W)

- Non-Maintained | Maintained
- 1 Hrs. Backup
- IP 65



PEL LED 220 NM/SL | PEL LED 220 M/SL
(Available in 36W)

- Non-Maintained | Maintained
- 1 Hrs. Backup
- IP 65



PEL LED 140 NM/SL | PEL LED 140 M/SL
(Available in 36W)

- Non-Maintained | Maintained
- 1 Hrs. Backup
- IP 65



PEL LED NM/SL/BULK | PEL LED M/SL/BULK

- Non-Maintained | Maintained
- 1 Hrs. Backup
- IP 65



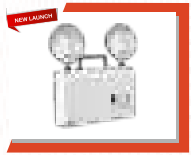
PEL LED LTBL
(Also available in Recessed Model)

- Non-Maintained
- 3 Hrs. Backup
- IP 20



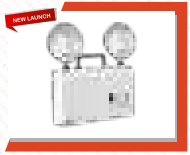
PEL LED TBL (SQ)
(Lamp: 2 x 10 Watt LED)

- Non-Maintained
- 3 Hrs. Backup
- IP 54/65



PEL LED LTBL (MP)
(Lamp: 2 x 1 Watt LED)

- Non-Maintained
- 3 Hrs. Backup
- IP 20



PEL LED LTBL (BP)
(Lamp: 2 x 3 Watt LED)

- Non-Maintained
- 3 Hrs. Backup
- IP 65



PEL LED LTBL (CP)

- Non-Maintained
- 3 Hrs. Backup
- IP 20



PEL LED LTBL (TC)
(Lamp: 2 x 5 Watt LED)

- Non-Maintained
- 3 Hrs. Backup
- IP 20



PEL LED TBL (SQ) WP(I)
(Lamp: 2 x 10 Watt LED)

- Non-Maintained
- 3 Hrs. Backup
- IP 65



PEL LED LML (CP)

- Non-Maintained
- 3 Hrs. Backup
- IP 20



PEL LED LML (CP) FF

- Non-Maintained
- 3 Hrs. Backup
- IP 20



PEL LED LML

- Non-Maintained
- 3 Hrs. Backup
- IP 20



PEL LED ML (SQ)
(Lamp: 2 x 10 Watt LED)

- Non-Maintained
- 3 Hrs. Backup
- IP 20



PEL LED ML (SQ) FF

- Non-Maintained
- 3 Hrs. Backup
- IP 20



PEL LED 3.0 HSL
(3 LED's)

- 10 Hrs. Backup
- IP 65



PEL 150 HSG 15W
(15 Watt LED)

- 1½ Hrs. Backup
- IP 65



PEL LED NM/FP | PEL LED M/FP
(Also available in NE Model)

- Non-Maintained
- 2 Hrs. Backup
- IP 65



PEL LED NM/FP (HL)

- Non-Maintained
- 2 Hrs. Backup
- IP 65



PEL 10W/18W LED M/RDL (CR) FP
(Also available in NM & NE Model)

- Maintained
- 1 Hrs. Backup
- IP 65



PEL LED TBL/FP/NM
(Also available in NE Model)

- Non-Maintained
- 1½ Hrs. Backup
- IP 65



PEL LED LML FP
(Lamp: 2 x 10 Watt LED)

- Non-Maintained
- 3 Hrs. Backup
- IP 65



PEL LED E/NM/FP (W) | PEL LED E/M/FP (W)
(Also available in NE Model)

- Non-Maintained | Maintained
- 2 Hrs. Backup
- IP 65



PEL LED E/NM/FP (SM) | PEL LED E/M/FP (SM)
(Also available in NE Model)

- Non-Maintained | Maintained
- 2 Hrs. Backup
- IP 65



PEL LED E/NM/FP | PEL LED E/M/FP

- Non-Maintained | Maintained
- 2 Hrs. Backup
- IP 65



PEL LED FE/DL/M (VL) | PEL LED FE/DL/M (VS)
(Lamp: 10 Watt LED)

- Maintained
- 90 Mins. Backup
- IP 20



PEL LED FE/DL/M (CCL)

- Maintained
- 90 Mins. Backup
- IP 20



PEL LED NM/RFL | PEL LED NM/RFL (LION)
(Available in 10W | 20W | 30W)

- Non-Maintained
- 1 Hrs. Backup
- IP 65



PEL EGT E/NM/DS(NM)
(Also available in Maintained & NE Model)

- Non-Maintained | Maintained
- 3 Hrs. Backup
- IP 20/65



PROHIBITION

These signs are for means of prohibiting the action of different types which will help to avoid accidents.



SAFETY

These signs are for means of safety indication of safe measures.



FIRE EQUIPMENT

These signs are meant for identifying appropriate type of Fire equipments for different type of fire & fire actions.



DIRECTION

These signs are for means of safety indication of safe measures.



MANDATORY

These signs are meant for mandatory notices which form an important part in maintenance of the means of escape.



WARNING

These signs are used in conjunction with mandatory and prohibition signs to help create a multipurpose signboard, to aid personnel safety in the workplace.



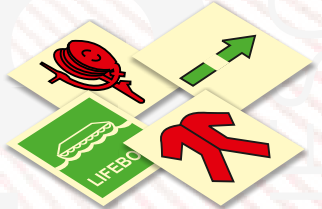
GENERAL

These signs are means of safety indication of safe measures which are especially used in accommodation areas.



COMBINATION

These signs are used for combination of different measures like Fire Equipment, Prohibition and Safety.



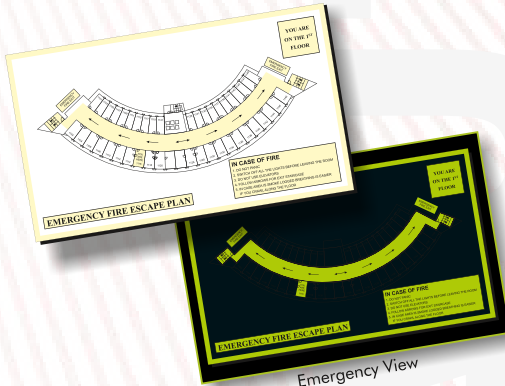
IMO SAFETY CONTROL

These signs are meant for safe measures & fire control especially used on ships or vessels.



PASSENGER VESSEL

These signs are for means of identifying the locations in passenger terminals and vessels.



Emergency View

EVACUATION PLANS

Suitable for areas where immediate location of one's position is essential in an emergency situation such as sudden darkness or in case of mains failure.

ALUMINIUM FRAMES

Aluminium frames are designed to accentuate your display. These frames can be wall mounted or ceiling hung with the aid of chrome plated steel hanging fixtures.

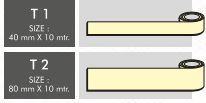
Ideal for:

- Safety Signages
- Evacuation Plans

- Sturdy
- Light weight
- Cost effective
- Satin anodized finish
- Custom Colors

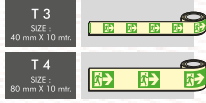


PHOTOLUMINESCENT TAPES



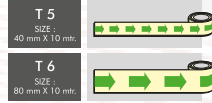
VINYL TAPE

Emergency Equipment Marking
Handrail Identification
Stair Identification



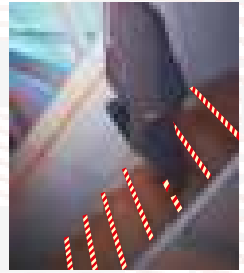
WAY FINDING TAPE
(Low Location Lighting)

Directional route marking way finding, supplied with left and right handed deals to allow tape to indicate either direction.



ARROW TAPE

Way finding or Escape Direction



GREEN DIAGONAL TAPE
Marking safe areas
Exit Door highlighting
Escape Identification



BLACK DIAGONAL TAPE
Danger zone marking
Obstacle marking

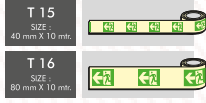


RED DIAGONAL TAPE
Highlighting fire fighting equipment
Hazard marking



ARROW TAPE

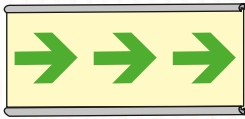
Way finding or Escape Direction



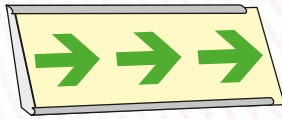
WAY FINDING TAPE
(Low Location Lighting)

Directional route marking way finding, supplied with left and right handed deals to allow tape to indicate either direction.

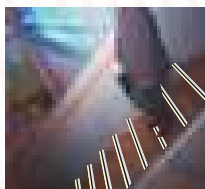
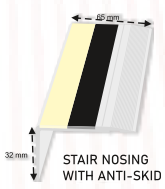
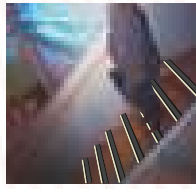
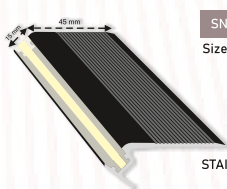
LOW LOCATION LIGHTING (LLL)



Size: 42 / 90 / 118 mm x 3 meters

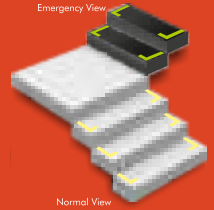


Size: 58 mm x 3 meters



AUTOGLO STAIR TREAD ILLUMINATION

Emergency View



- Highlights the most important elements in staircase escape traffic... The stair tread edge!

- Gives the evacuee identification, direction and orientation both in normal as well as emergency lighting conditions.

PHOTOREFLECTIVE SIGNS

Photorefective sheeting is a combination of reflective and photoluminescent material which glows brightly with light and glows in dark wen the light source is removed.

Photorefective sheeting are used to increase the nighttime conspicuity of signs so they are safely and effectively visible in the light.

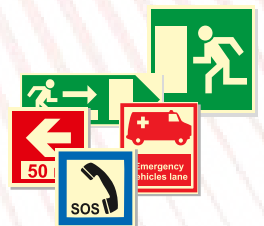


Ideal for: Tunnels, Roads Signs, Basement Parking, Runway Signs, Metros, etc.

CAR PARKING SIGNS



TUNNEL SIGNS





EMERGENCY ESCAPE LIGHTING SOLUTIONS & FIRE SAFETY SIGNAGES



 www.prolite.in

 sales@prolite.in

 +91-22-6786 8100

 Prolite Autoglo Ltd, 25 Singh Industrial Estate No 3, Ram Mandir Road, Goregaon (West), Mumbai 400104, Maharashtra, INDIA.

