

SAFE PEOPLE FLOW[®] FOR HORIZONTAL SPEED



SAFE PEOPLE FLOW® FOR HORIZONTAL SPEED

The KONE TransitMaster™ 165 is a horizontal autowalk designed in particular for airports and busy hubs, where people need to move quickly and conveniently between different areas in order to arrive to their destination faster.

Applications	Public transportation, mainly airports
Environment	Indoor
Length	20–100 m
Inclination	0–6°
Group Arrangement	Single / Parallel in same running direction / Parallel in opposite running direction
Pallet width	1000 mm / 1200 mm / 1400 mm
Speed	0.5 / 0.65 / 0.75 m/s
Truss deflection	1/1000 and 1/1500
Gearbox type	Worm gear (88% efficiency) Helical gear (92% efficiency)
Drive location	Outside pallet band
Pallet chain type	Inside roller Ø75 x 23.5 mm
Controller	KONE 501B
Power supply	50Hz / 400V / 230V
Operation mode	Standby speed Standby speed and automatic start/stop
Code compliance	EN115-1: 2017





KEY SPECIFICATIONS

Symmetric
designTravel length
20–100 mPallet width
1000 / 1200 /
1400 mmIndoor
environmentSpeed
0.5 / 0.65 / 0.75 m/sPeople Flow Capacity
up to 6600 people/h

Front plate	Black plastic
	Stainless steel
Balustrade	Safety Glass panels 10 mm
	Balustrade height: 1000 mm
Decking	Brushed satin stainless steel
	Natural anodised aluminium
Skirt	Black sheet steel
	Stainless steel
Access cover	Ribbed aluminium with black grooves
	Ribbed aluminium natural colour
	Aluminium with black painted stainless steel surface
	Aluminium with stainless steel surface
Pallet	Silver painted aluminium (Grinded surface R10)
	Black painted aluminium (Grinded surface R10)
	Natural aluminium (Grinded surface R10)
Pallet demarcation	Without
	Yellow painted on 2 sides
Comb segment	Aluminium
	Aluminium with yellow coating (RAL 1023)
Lighting	Without
	LED continuous (different colours) for handrail and skirt
	LED spot lights (white) for skirt
	LED static comb light (different colours)
	LED traffic lights
LED under-pallet lighting (green)	

PEACE OF MIND WITH SAFETY

SKIRT PANELS

coated with anti-friction coating
minimise drag and reduce possibility
of entrapments between skirt and
pallets.

COMB PLATE IMPACT DEVICE SWITCHES

minimise the risk of entrapment in
comb plate areas.

KONE 24/7 CONNECTED SERVICES

helps you to see the status of the
autowalk in real time to ensure safe
operation.

ANTI SLIP REQUIREMENT

R10 anti-slip grade pallet surface
reduces the chance of passengers
slipping.

400 MM LONG PALLETS

increase the ride comfort of
passengers during their travel
experience.

FIRE SAFETY

maximised with halogen-free and
fire-resistant wiring and sealed-for-life
lubrication-free pallet chains.

EMERGENCY STOP BUTTONS

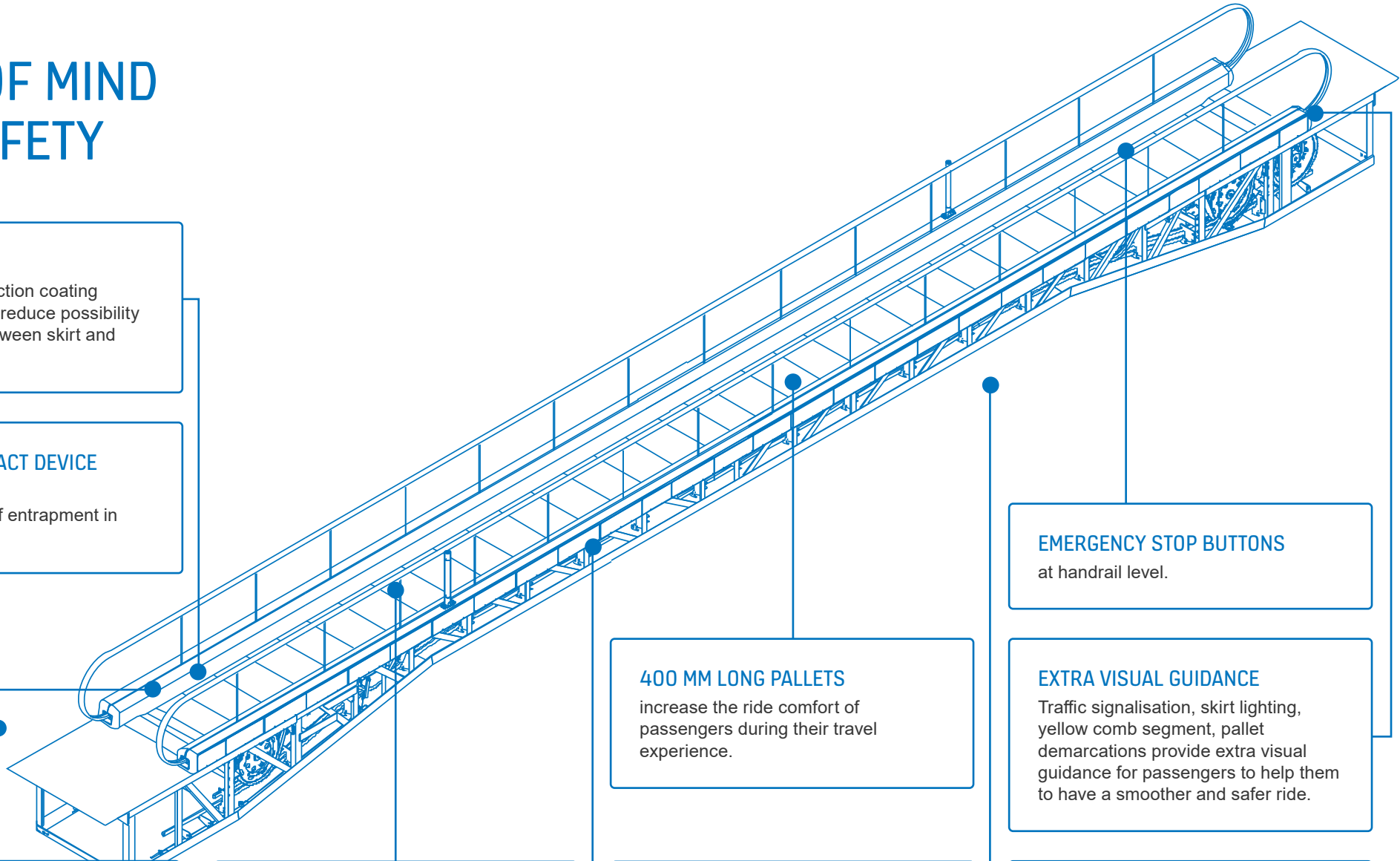
at handrail level.

EXTRA VISUAL GUIDANCE

Traffic signalisation, skirt lighting,
yellow comb segment, pallet
demarcations provide extra visual
guidance for passengers to help them
to have a smoother and safer ride.

AUDIBLE ALARMS

provide clear guidance on autowalk
travel directions and safe usage.



REDUCED ENVIRONMENTAL IMPACT

Installing an eco-efficient KONE autowalk solution can help in achieving green building accreditations such as LEED or BREEAM certification.

BREEAM CERTIFICATION

One credit can be attained by fulfilling one of the following requirements:

A load-sensing device that synchronises motor output to passenger demand through a variable speed drive

OR

A passenger-sensing device for automated operation, so the autowalk operates in auto start mode when there is no passenger demand.

LEED CERTIFICATION

KONE solutions can also contribute to several LEED certification categories.

KONE RECOGNISED AS A TOP PERFORMER IN 2018 CDP CLIMATE CHANGE REPORTING

We are proud to once again be among the top performers in CDP climate change reporting with a score of A- for 2018.

KONE has received an A or A- score for six consecutive years.

KONE RANKED AMONG THE TOP 100 MOST SUSTAINABLE COMPANIES IN THE WORLD

- KONE ranked 43rd in Corporate Knights' 2019 Global 100 Most Sustainable Corporations in the World
 - 2nd among its 443 global category peers in the "Machinery Manufacturing"
 - Only lift and escalator industry company in the Top 100 ranking
- Top performer in environmental performance and social responsibility, such as employee retention and board gender diversity
- The Global 100 ranking is based on a rigorous analysis of 7,500 companies with revenues of over USD 1 billion

ECO-EFFICIENT AUTOWALK

KONE TransitMaster™ 165 is able to achieve A+++ energy performance certificate based on ISO standard.

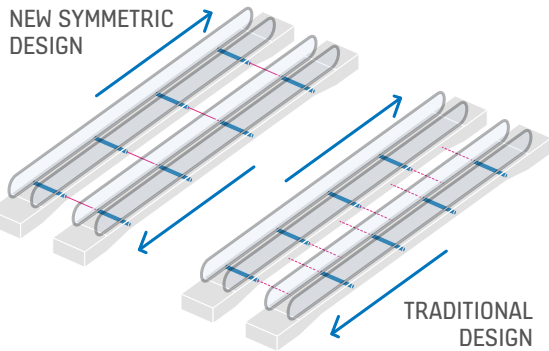
4 WAYS TO MAKE YOUR AUTOWALK MORE ECO-EFFICIENT:

- High efficiency motors minimise energy consumption at full speed
- Lubrication-free pallet chain means no oil, a cleaner autowalk and environment, reduced fire hazard, simpler cleaning and easier maintenance
- Long-lasting led lighting is up to 80% more efficient than fluorescent lighting and lasts up to 10 times longer
- Eco-efficient operational modes save energy by slowing down or stopping the autowalk completely when traffic is low. For example, when an autowalk is empty, energy consumption is further reduced by slow stand-by speed and furthermore by stopping the autowalk

HIGH QUALITY DESIGN TO MATCH YOUR BUILDING REQUIREMENTS

SYMMETRIC DESIGN

Symmetric design means that two parallel autowalks running in opposite directions have the same positions for intermediate supports. This saves your engineering time, installation time and costs of additional support beams.

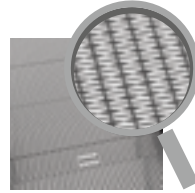


Structural elements and supports are aligned even if parallel autowalks are running in different directions.

ACCESS COVERS



Aluminium with stainless steel surface



Aluminium with black painted stainless steel surface



Ribbed aluminium natural colour



Ribbed aluminium with black grooves

SKIRTING

SKIRT

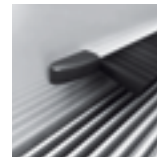


Brushed satin stainless steel skirt with clear anti-friction coating

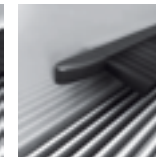


Sheet steel skirt with black anti-friction coating

SKIRT BRUSH HOLDER



Clear anodised aluminium

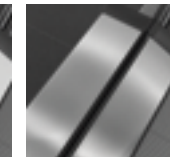


Black anodised aluminium

DECKING

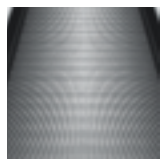


Natural anodised aluminium

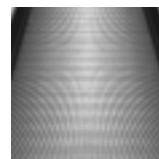


Brushed satin stainless steel

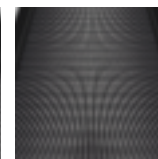
PALLETS



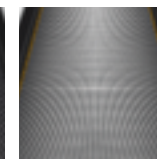
Natural aluminium



Silver painted aluminium

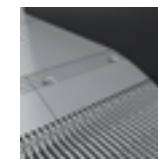


Black painted aluminium

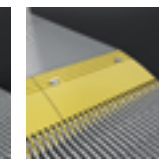


Yellow painted demarcation on two sides of pallet

COMB



Aluminium comb segments



Aluminium comb segments with yellow coating

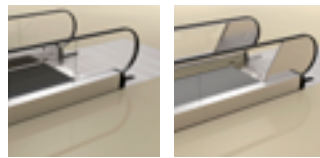
FRONT PLATE



Stainless Steel

Black plastic

BALUSTRADE



Glass balustrade up to 60 m autowalk length

Glass balustrade from 60 to 100 m autowalk length

ADDITIONAL OPTIONS



Additional emergency stop button

Diagnostic display

HANDRAILS



Black

Black with white demarcation inserts

Red

Blue



Green

Brown

Beige

Grey

LIGHTING

CONTINUOUS LED HANDRAIL LIGHTING (*for units with length less than 60 m)



White

Yellow

Red

Blue

Green

CONTINUOUS LED SKIRT LIGHTING



White

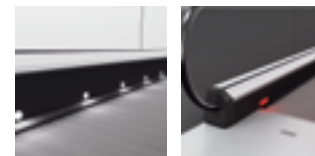
Yellow

Red

Blue

Green

LED LIGHTING



LED skirt spot lighting (only in white)

LED comb lighting (available in white, yellow, red, blue and green)

ADDITIONAL LIGHTING



LED traffic lights located in the decking

Pallet demarcation lighting

KONE provides innovative and eco-efficient solutions for lifts, escalators, automatic building doors* and the systems that integrate them with today's intelligent buildings.

We support our customers every step of the way; from design, manufacturing and installation to maintenance and modernisation. KONE is a global leader in helping our customers manage the smooth flow of people and goods throughout their buildings.

Our commitment to customers is present in all KONE solutions. This makes us a reliable partner throughout the life cycle of the building. We challenge the conventional wisdom of the industry. We are fast, flexible and we have a well-deserved reputation as a technology leader, with such innovations as KONE MonoSpace® DX, KONE NanoSpace™ and KONE UltraRope®.

KONE employs close to 57,000 dedicated experts to serve you globally and locally.

* not available in Ireland

KONE PLC

Head office

KONE Plc
Global House,
Station Place, Fox Lane North
Chertsey, Surrey,
KT16 9HW

Tel. +44 (0) 8451 999 999

www.kone.co.uk

KONE IRELAND

Head office

KONE Ireland Limited
G7 Calmount Business Park
Calmount Avenue
Ballymount
Dublin D12 NP64

Dublin office: +353 (0) 1429 6200

Belfast office: +44 (0) 2890 735900

www.kone.ie

This publication is for general informational purposes only and we reserve the right at any time to alter the product design and specifications. No statement in this publication shall be construed as a warranty or condition, express or implied, as to any product, its fitness for any particular purpose, merchantability, quality or representation of the terms of any purchase agreement. Minor differences between printed and actual colours may exist. KONE MonoSpace® DX, KONE EcoDisc®, KONE Care® and People Flow® are registered trademarks of KONE Corporation. Copyright © 2019 KONE Corporation.