

PASSENGER ELEVATORS



DESIGN GUIDE

Ceiling Design

Signal Fixtures

Interior

Hall Design

Observation Cars

Materials and Colors

Principle

Based on our policy, "Quality in Motion", we provide elevators and escalators that will satisfy our customers with high levels of comfort, efficiency, ecology and safety.



Comfort

Efficiency

Ecology

Safety







Mitsubishi Electric elevators, escalators and building management systems are always evolving, helping achieve our goal of being the No.1 brand in quality. In order to satisfy customers in all aspects of comfort, efficiency and safety while realizing a sustainable society, quality must be of the highest level in all products and business activities, while priority is placed on consideration for the environment. As the times change, Mitsubishi Electric promises to utilize the collective strengths of its advanced and environmental technologies to offer its customers safe and reliable products while contributing to society.

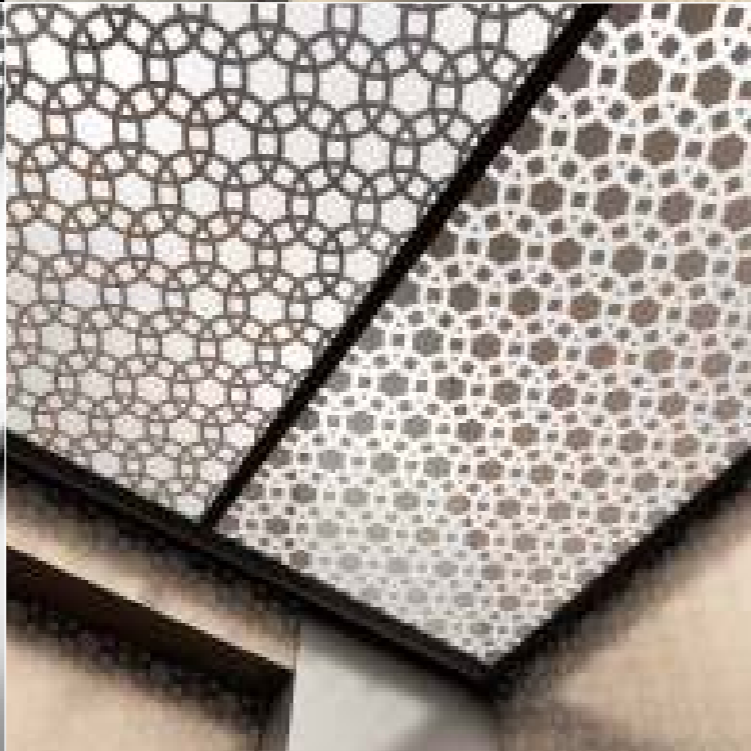
We strive to be green in all of our business activities.

We take every action to reduce environmental burden during each process of our elevators' and escalators' lifecycle.



Contents

	Ceiling Design	3-14
	Signal Fixtures	15-23
	Interior	24
	Hall Design	25-26
	Observation Cars NEXIEZ - MRL Only	27-28
	Materials and Colors	29-30



L400

Softly lit illuminated ceiling with a sparkling slitted frame



Car Design Example

- Ceiling (L400) ——— Panel: Painted steel sheet [Y055: Dark gray]
Lighting: Indirect lighting (LEDs)
- Walls ——— Pattern-printed steel sheet [CP121: Primary grain]
- Transom panel ——— Pattern-printed steel sheet [CP121: Primary grain]
- Doors ——— Pattern-printed steel sheet [CP121: Primary grain]
- Front return panels ——— SUS-HL
- Kickplate ——— SUS-HL
- Flooring ——— PR803: Gray
- Car operating panel ——— CBV1-C730
- Handrail ——— YH-59S

Actual colors may differ slightly from those shown.
Please refer to page 14 for the meaning of SUS-HL.

L410

Contrast of light and shadows using sharp lines



Car Design Example

- Ceiling (L410) ——— Panel: Painted steel sheet [Y033: White] with slits
Lighting: Slit lighting (LEDs)
- Walls ——— SUS-M
- Transom panel ——— SUS-M
- Doors ——— SUS-M
- Front return panels ——— SUS-M
- Kickplate ——— SUS-HL
- Flooring ——— PR812: Dim-gray
- Car operating panel ——— CBV3-C730
(faceplate: SUS-M)
- Handrail ——— YH-59M

L200

Twinkling lights through chandelier-like lighting panel



Car Design Example

- Ceiling (L200) ——— Panel: Painted steel sheet [Y033: White]
with an acrylic lighting cover
Lighting: Central lighting
and downlights (LEDs)
- Walls ——— SUS-HE (EPA-4)
- Transom panel ——— SUS-HE (EPA-4)
- Doors ——— SUS-HE (EPA-4)
- Front return panels ——— SUS-HL
- Kickplate ——— SUS-HL
- Flooring ——— PR810: Ocher
- Car operating panel ——— CBV1-C760
- Handrail ——— YH-59M

Note : Position of central lighting differs from images shown above when an emergency exit (the area shown in blue) is required.



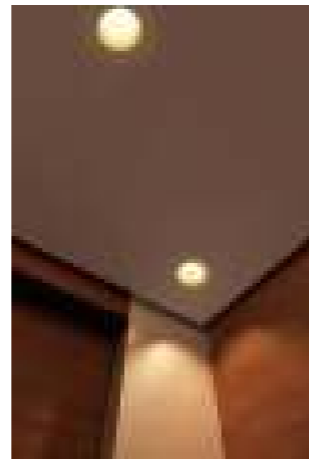
Optional Ceiling Design L200S

Panel: SUS-HL
Others: Same as L200.

Actual colors may differ slightly from those shown. Please refer to page 14 for the meaning of SUS-HL, SUS-HE and SUS-M.

L210

Sophisticated atmosphere created by downlights and shadows



Car Design Example

- Ceiling (L210) ———— Panel: Painted steel sheet [Y033: White]
Lighting: Downlights (LEDs)
- Walls ———— Pattern-printed steel sheet [CP111: Dark grain]
- Transom panel ———— Pattern-printed steel sheet [CP111: Dark grain]
- Doors ———— Pattern-printed steel sheet [CP111: Dark grain]
- Front return panels ———— SUS-HL
- Kickplate ———— SUS-HL
- Flooring ———— PR812: Dim-gray
- Car operating panel ———— CBV1-N730
- Handrail ———— YH-59S



Optional Ceiling Design **L210S**

Panel: SUS-HL
Others: Same as L210.

L310

Beautifully arched panel with shaded gradation



Car Design Example

- Ceiling (L310) ———— Panels: [Center] Metal-like resin panel
[Sides] Milky white resin panels
Lighting: Full lighting (LEDs)
- Walls ———— SUS-HL
- Transom panel ———— SUS-HL
- Doors ———— SUS-HL
- Front return panels ———— SUS-HL
- Kickplate ———— SUS-HL
- Flooring ———— PR803: Gray
- Car operating panel ———— CBV1-N730

Actual colors may differ slightly from those shown.
Please refer to page 14 for the meaning of SUS-HL.

N300

Terraced design with illusion of increased ceiling height



Car Design Example

- Ceiling (N300) ———— Panel: Painted steel sheet [Y033: White]
Lighting: Central indirect lighting and downlights
- Walls ———— Pattern-printed steel sheet [CP23: Minimal stripe]
- Transom panel ———— SUS-HL
- Doors ———— SUS-HL
- Front return panels ———— SUS-HL
- Kickplate ———— SUS-HL
- Flooring ———— PR801: Cream beige
- Car operating panel ———— CBV1-N710
- Handrail ———— YH-59S



Optional Ceiling Design **N300S**

Panel: SUS-HL
Walls: SUS-HL
Others: Same as N300.

N120

Gorgeous ceiling with lustrous translucent panels fused using refined geometric patterns



Car Design Example

- Ceiling (N120) ———— Panels: [Center] Milky white resin panel
[Sides] Resin panels with mirrored surface
Lighting: Central lighting and downlights
- Walls ———— SUS-HE (EPA-3)
- Transom panel ———— SUS-HE (EPA-3)
- Doors ———— SUS-HE (EPA-3)
- Front return panels ———— SUS-M
- Kickplate ———— SUS-HL
- Flooring ———— PR801: Cream beige
- Car operating panel ———— CBV5-N710
- Handrail ———— YH-59M

Actual colors may differ slightly from those shown.
Please refer to page 14 for the meaning of SUS-HL, SUS-HE and SUS-M.

N130

Light transmitted through exotic ceiling patterns



Car Design Example

- Ceiling (N130) ———— Panel: Milky white resin panels
Lighting: Full lighting
- Walls ———— Colored (bronze) SUS-HE (EPA-2)
- Transom panel ———— Colored (bronze) SUS-HE (EPA-2)
- Doors ———— Colored (bronze) SUS-HE (EPA-2)
- Front return panels ———— SUS-HL
- Kickplate ———— Colored (bronze) SUS-HL
- Flooring ———— PR812: Dim-gray
- Car operating panel ———— CBV1-N710
(faceplate: SUS-M)

N140

Stylish ceiling accented with crystal-like blocks



Car Design Example

- Ceiling (N140) ———— Panels: [Center] Milky white resin panel
[Sides] Resin panels with mirrored surface and acrylic blocks
Lighting: Full lighting
- Walls ———— Colored (gold) SUS-HE (EPA-1)
- Transom panel ———— SUS-M
- Doors ———— Colored (gold) SUS-HE (EPA-1)
- Front return panels ———— SUS-M
- Kickplate ———— Colored (gold) SUS-HL
- Flooring ———— PR810: Ocher
- Car operating panel ———— CBV1-D740
(faceplate: SUS-M)
- Handrail ———— YH-59G

Actual colors may differ slightly from those shown.
Please refer to page 14 for the meaning of colored SUS-HL, colored SUS-HE and SUS-M.



Car Design Example-1

- Ceiling (S00) — Panel: Painted steel sheet [Y033: White] with a milky white resin lighting cover
Lighting: Central lighting
- Walls — SUS-HL
- Transom panel — SUS-HL
- Doors — SUS-HL
- Front return panels — SUS-HL
- Kickplate — Aluminum
- Flooring — PR803: Gray
- Car operating panel — CBV1-C760
- Handrail — YH-59S

Note: Position of central lighting differs from images shown above when an emergency exit (the area shown in blue) is required.



Car Design Example-2

- Ceiling (S00) — Same as Car Design Example-1
- Walls — Painted steel sheet [Y004: Beige]
- Transom panel — Painted steel sheet [Y004: Beige]
- Doors — Painted steel sheet [Y004: Beige]
- Front return panels — SUS-HL
- Kickplate — Aluminum
- Flooring — PR803: Gray
- Car operating panel — CBV1-C760
- Handrail — YH-59S



Car Design Example-3

- Ceiling (S00) — Same as Car Design Example-1
- Walls — Painted steel sheet [Y117: Lime green]
- Transom panel — Painted steel sheet [Y117: Lime green]
- Doors — Painted steel sheet [Y117: Lime green]
- Front return panels — SUS-HL
- Kickplate — Aluminum
- Flooring — PR803: Gray
- Car operating panel — CBV1-C760
- Handrail — YH-59S



Car Design Example-4

- Ceiling (S00) — Same as Car Design Example-1
- Walls — Painted steel sheet [Y119: Carrot orange]
- Transom panel — Painted steel sheet [Y119: Carrot orange]
- Doors — Painted steel sheet [Y119: Carrot orange]
- Front return panels — SUS-HL
- Kickplate — Aluminum
- Flooring — PR803: Gray
- Car operating panel — CBV1-C760
- Handrail — YH-59S

Car Finish Application Table Please refer to pages 29 and 30 for materials and colors.

Materials/Finishes	Walls	Transom panel	Doors	Front return panels	Kickplate	Flooring	Sill
Stainless-steel, hairline-finish (SUS-HL)	Standard	Standard	Standard	Standard	Optional		
Pattern-printed steel sheet	Optional	Optional	Optional				
Painted steel sheet	Optional	Optional	Optional	Optional*3	Optional*4		
Stainless-steel, hairline-finish with etched pattern*1 (SUS-HE)	Optional	Optional	Optional				
Colored stainless-steel, hairline-finish (colored SUS-HL)	Optional	Optional	Optional		Optional		
Colored stainless-steel, hairline-finish with etched pattern*2 (colored SUS-HE)	Optional	Optional	Optional				
Stainless-steel, mirror-finish (SUS-M)	Optional	Optional	Optional	Optional			
Aluminum					Standard		
Glass windows [1300(H)×200(W)/1300(H)×300(W)]			Optional				
See-through doors			Optional				
Durable vinyl tiles (2mm thick)						Standard	
Aluminum checkered plate (3t)						Optional	
Rubber tile/carpet/marble/granite (supplied by customer)						Optional	
Extruded hard aluminum							Standard
Stainless-steel							Optional

Note:

*1: Etching pattern EPA-1~6 only.

*2: Etching pattern EPA-1~3 only.

*3: Painted steel sheet may not be available for front return panel depending on the manufacturing factory, please consult our local agents for details.

*4: Only available in dark gray.

Actual colors may differ slightly from those shown.

Signal Fixtures

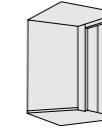


Segment LED* Indicators

*Some letters of the alphabets are not available. Please consult our local agents for details.

Car operating panel*^{1,2}

For front return panel



Standard
CBV1-C760*³
(CBV1-C766)*^{3,4}

Tactile button with yellow-orange lighting

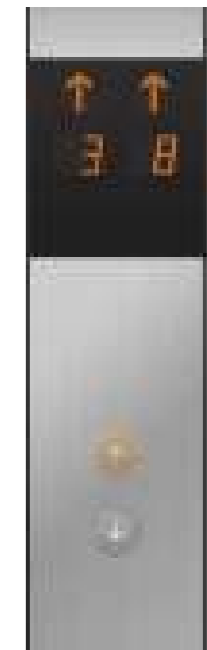
Hall position indicators and buttons*¹

With plastic case



Standard

PIV1-A1010N **Boxless**
PIV1-A1010B
Tactile button with yellow-orange lighting



Standard

PIV1-A1020N **Boxless**
PIV1-A1020B
Tactile button with yellow-orange lighting

Button line-up

Illumination colors	Yellow-orange	White	Blue
Tactile	 CBV1/PIV1/HBV1 Standard	 CBV3/PIV3/HBV3	 CBV5/PIV5/HBV5
Flat	 CBV2/PIV2/HBV2	 CBV4/PIV4/HBV4	 CBV6/PIV6/HBV6

Tactile or flat button (stainless-steel, non-directional hairline) is selectable from three types of illumination colors (yellow-orange, white or blue).

Notes:

*1: Dot LED indicators are also available (optional). Please consult our local agents for details.

*2: A faceplate with stainless-steel, mirror-finish is also available (optional). Please consult our local agents for details.

*3: Maximum number of floors: 22 floors.

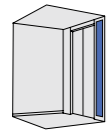
*4: The type in parentheses () shows an auxiliary car operating panel (optional). The design is slightly different from the above image. Please consult our local agents for further information such as installation location.

Actual colors may differ slightly from those shown.

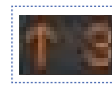
Segment LED* Indicators

*Some letters of the alphabets are not available. Please consult our local agents for details.

Car operating panels*1,2,3



For front return panel

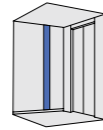


Dot LED indicator
CBV■-C720
(CBV■-C726)*4



CBV■-C710
(CBV■-C716)*4

Swing type
CBV■-D710
(CBV■-D716)*4



For side wall

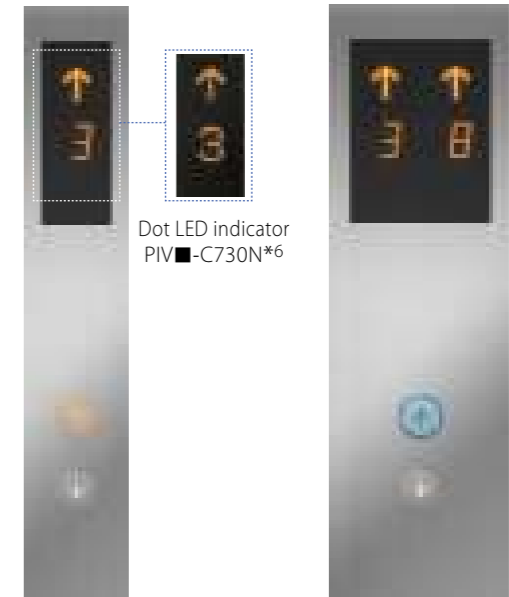


CBV■-N710
(CBV■-N716)*4

CBV■-N712*5
(with alarm indication
and buttons for EN81-70)
(CBV■-N717)*4,5



Hall position indicators and buttons*1,2,3



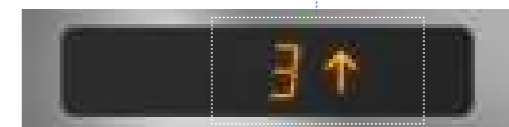
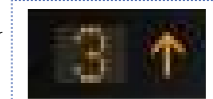
PIV■-C710N*6

PIV■-C720N

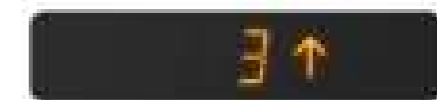
Dot LED indicator
PIV■-C730N*6

Hall position indicators*2

Dot LED indicator
PIH-D415



PIH-D417



PID-D417
(built into transom panel)

Hall position indicator with lantern*2



PIE-B47



Notes:

*1: The symbol ■ is replaced with a number representing the button type and illumination color. (e.g. CBV1, CBV2, etc.) Please refer to page 16 for button line-up.

*2: Dot LED indicators are also available (optional). Please consult our local agents for details.

*3: Faceplates with stainless-steel, mirror-finish are also available (optional). Please consult our local agents for details.

*4: The type in parentheses () shows an auxiliary car operating panel (optional). The design is slightly different from the above images. Please consult our local agents for further information such as installation location.

*5: The applicable button type is tactile buttons only.

*6: For single-car operation, these hall signal fixtures with tactile buttons conform to EN81-70.

LCD Indicators

Car operating panels ^{*1,2}

For front return panel



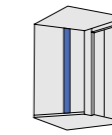
CBV■-C780^{*3}
(CBV■-C786)^{*3,4}

CBV■-C730
(CBV■-C736)^{*4}

Swing type (5.7-inch)
CBV■-D730
(CBV■-D736)^{*4}

Swing type
(10.4-inch)
CBV■-D740

Swing type
(15-inch)
CBV■-D750



For side wall



CBV■-N730
(CBV■-N736)^{*4}

CBV■-N732^{*5}
(with alarm indication
and buttons for EN81-70)
(CBV■-N737)^{*4,5}

Notes:

*1: The symbol ■ is replaced with a number representing the button type and illumination color. (e.g. CBV1, CBV2, etc.)
Please refer to page 16 for button line-up.

*2: Faceplates with stainless-steel, mirror-finish are also available (optional). Please consult our local agents for details.

*3: Maximum number of floors: 22 floors.

*4: The type in parentheses () shows an auxiliary car operating panel (optional). The design is slightly different from the above images.
Please consult our local agents for further information such as installation location.

*5: The applicable button type is tactile buttons only.

LCD Indicators

Hall position indicators and buttons *1,2



PIV■-C766N*3

PIV■-C776N

LCD position indicator (for hall)



PIH-C117 (5.7-inch)

LCD information displays (for hall)



PIH-C216 (10.4-inch)



PIH-C226 (15-inch)

Notes:

*1: The symbol ■ is replaced with a number representing the button type and illumination color. (e.g. PIV1, PIV2, etc.) Please refer to page 16 for button line-up.

*2: Faceplates with stainless-steel, mirror-finish are also available (optional). Please consult our local agents for details.

*3: For single-car operation, this hall signal fixture with tactile buttons conform to EN81-70.

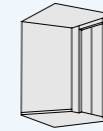
*4: The type in parentheses () shows auxiliary car operating panel (optional). The design is slightly different from the above images.

Please consult our local agents for further information such as installation location.

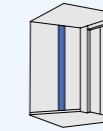
*5: The symbol □ is replaced with an illumination color number as shown under the car operating panel images.

NEXIEZ-MR, NexWay-S Only

Car operating panels



For front return panel



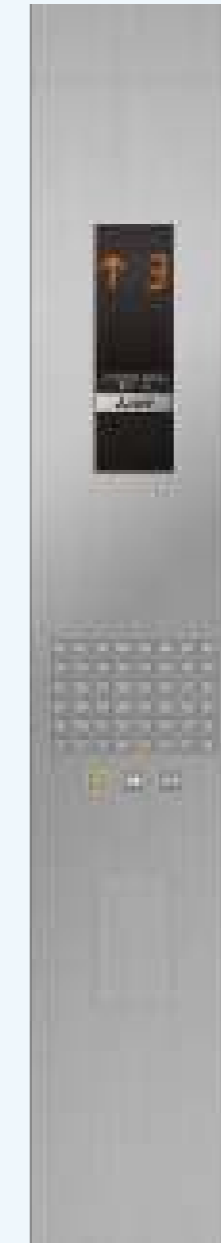
For side wall



CBU□*5-C710
(CBU□*5-C716)*4



CBVF-C258
Keypad type



CBU□*5-N710



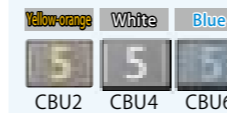
CBVF-N228
Keypad type



CBVF-N229S
(with alarm indication
and buttons for EN81-70)
Keypad type



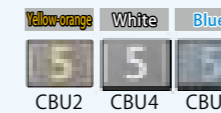
CBVF-N229L
(with alarm indication
and buttons for EN81-70)
Keypad type



Flat buttons
(Stainless-steel)



Number: Flat button
Star: Tactile button
(Stainless-steel matte)



Flat buttons
(Stainless-steel)

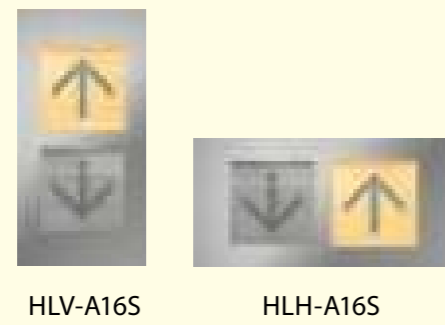
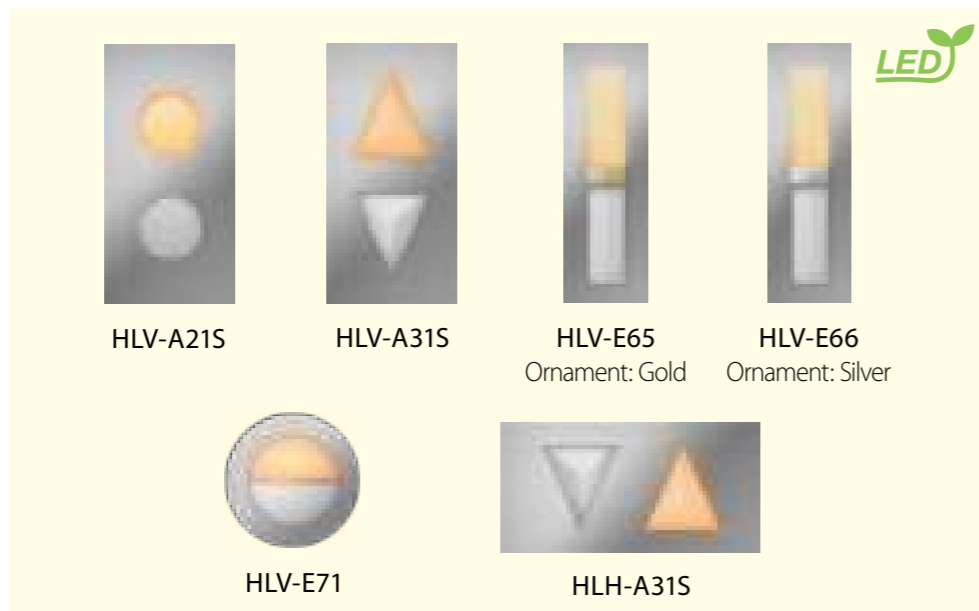


Number: Flat button
Star: Tactile button
(Stainless-steel matte)



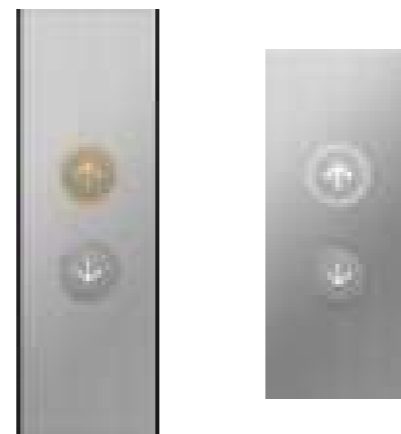
Hall Signal Fixtures

Hall lanterns



Hall buttons*1

With plastic case

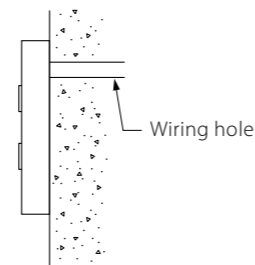


No-entry indicators for EN81-73



Cross-section of boxless fixtures Boxless

These hall signal fixtures can be easily mounted on the wall surface without having to cut into the wall to embed the back box.



Notes:

- *1: The symbol ■ is replaced with a number representing the button type and illumination color. (e.g. HBV1, HBV2, etc.) Please refer to page 16 for button line-up.
- *2: A faceplate with stainless-steel, mirror finish is also available (optional). Please consult our local agents for details.
- *3: These hall signal fixtures with tactile buttons are applicable to EN81-70 compliant elevators.

Interior

Mirrors



YZ-52A
Half-size

YZ-53A
2-mirror set

YZ-55SN
Full height

Handrails



YH-59S (SUS-HL)



YH-59M (SUS-M)



YH-59G (SUS-M)



YH-57S (SUS-HL)

Actual colors may differ slightly from those shown. Please refer to page 14 for the meaning of SUS-HL and SUS-M.

Hall Design

E-312 Splayed Jamb with Transom Panel
E-212 Square Jamb with Transom Panel



Jamb ——— SUS-HL
Transom panel ——— SUS-HL
Doors ——— See-through doors
Hall lantern ——— HLV-A31S
Hall button ——— HBV1-C710N

E-312 Splayed Jamb with Transom Panel
E-212 Square Jamb with Transom Panel



Jamb ——— SUS-HL
Transom panel ——— SUS-HL
Doors ——— SUS-HL
Hall position indicator ——— PID-D417
Hall button ——— HBV1-C710N

E-302 Splayed Jamb
E-202 Square Jamb



Jamb ——— SUS-HL
Doors ——— Painted steel sheet (Y014: Red-violet)
Hall position indicator ——— PIH-D417
Hall button ——— HBV1-C710N

E-102 Narrow Jamb **Standard**



Jamb ——— SUS-HL
Doors ——— SUS-HL
Hall position indicator and button ——— PIV1-A1010N **Boxless**

Entrance Finish Application Table Please refer to pages 29 and 30 for materials and colors.

Materials/Finishes	Jamb	Transom panel	Doors	Sill
Stainless-steel, hairline-finish (SUS-HL)	Standard	Optional	Standard	
Painted steel sheet	Optional	Optional	Optional	
Stainless-steel, hairline-finish with etched pattern (SUS-HE)		Optional	Optional	
Stainless-steel, mirror-finish (SUS-M)			Optional	
Glass windows [1300(H)×200(W)/1300(H)×300(W)]			Optional	
See-through doors			Optional	
Extruded hard aluminum				Standard
Stainless-steel				Optional

Actual colors may differ slightly from those shown.



Observation Cars

NEXIEZ-MRL Only

Natural light gives the car a spacious atmosphere



- | | | | | | |
|---------------------|-------|-----------------------------|---------------------|-------|--------------------------|
| Ceiling | ————— | L310 | Doors | ————— | SUS-HL with glass window |
| Lighting | ————— | Full lighting (LEDs) | Front return panel | ————— | SUS-HL |
| Mullions (interior) | ————— | SUS-HL | Kickplate | ————— | SUS-HL |
| Mullions (exterior) | ————— | Painted finish (N5.5: gray) | Flooring | ————— | PR812: Dim-gray |
| Windows | ————— | Transparent flat glass | Car operating panel | ————— | CBV1-N710 |
| Glass frames | ————— | Aluminum | Handrail | ————— | SUS-HL (YH-55S) |
| Transom panel | ————— | SUS-HL | | | |

Glass Arrangements



NY-30A
Rear & both sides



NY-30B
Rear



NY-30C
Both sides



NY-30D
Rear & one side



NY-30E
Rear & one side

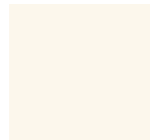
Actual colors may differ slightly from those shown. Please refer to page 14 for the meaning of SUS-HL.

Materials and Colors

Ceiling

Painted steel sheet

(L400, L410, L200, L210, N300, S00 only)



Y033 White



Y073 Light beige



Y055 Dark gray

Stainless-steel Hairline-finish

(Applicable to L200S, L210S or N300S only)

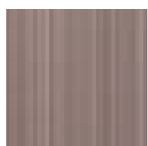


[Car] Walls, doors and transom panel

Colored stainless-steel, hairline-finish



Gold



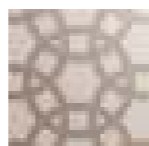
Bronze

Etching patterns (gold or bronze)

*Please refer to the etching finish pattern book, EFA1, for details.



EPA-1



EPA-2



EPA-3

Pattern-printed steel sheet



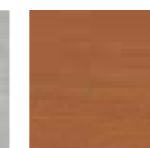
CP23 Minimal stripe



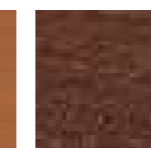
CP101 Silver



CP141 Bright slate

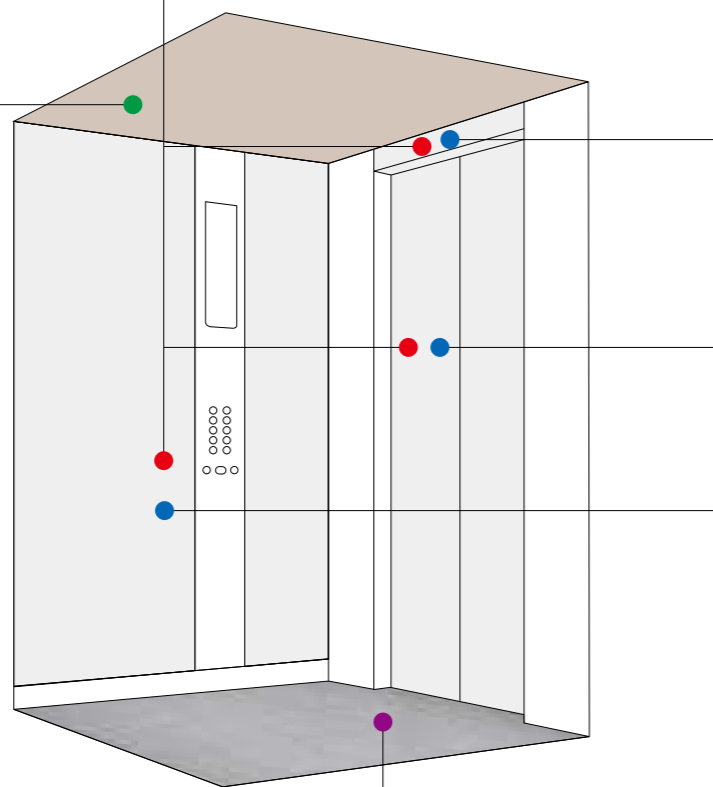


CP121 Primary grain



CP111 Dark grain

Non-etched surface
Etched surface

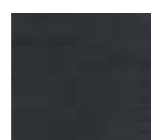


Flooring

Durable vinyl tiles



PR803 Gray



PR812 Dim-gray



PR801 Cream beige



PR810 Ocher

[Car] Walls, doors and transom panel [Hall] Doors, transom panel and jamb

Stainless-steel



Hairline-finish



Mirror-finish (Not applicable to the hall transom panel and jamb.)

Etching patterns (stainless-steel)

*Not applicable to the jamb, please refer to the etching finish pattern book, EFA1, for details.



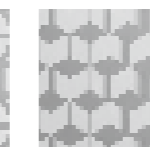
EPA-1



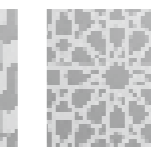
EPA-2



EPA-3



EPA-4



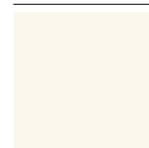
EPA-5



EPA-6

Non-etched surface
Etched surface

Painted finish Neutral Colors



Y033 White



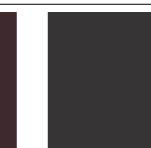
Y004 Beige



Y071 Neutral beige

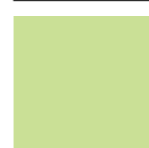


Y002 Dark brown

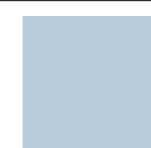


Y055 Dark gray

Cool Colors



Y117 Lime green



Y118 Light grayish blue



Y116 Blue

Warm Colors



Y016 Light brown



Y119 Carrot orange



Y014 Red-violet

[Hall] Doors and transom panel

Etching patterns *Please refer to the etching finish pattern book, EF4, for details.



EP-A-004



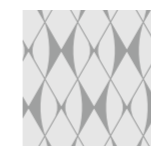
EP-A-011



EP-A-021



EP-B-009

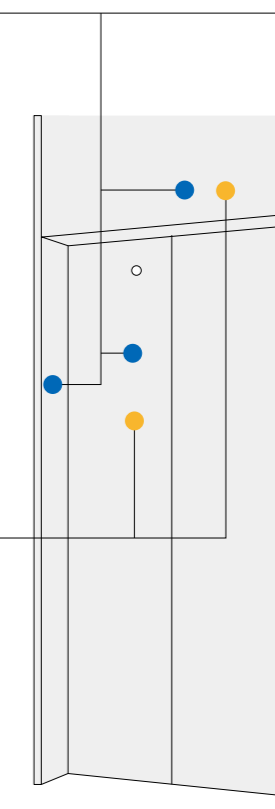


EP-D-006

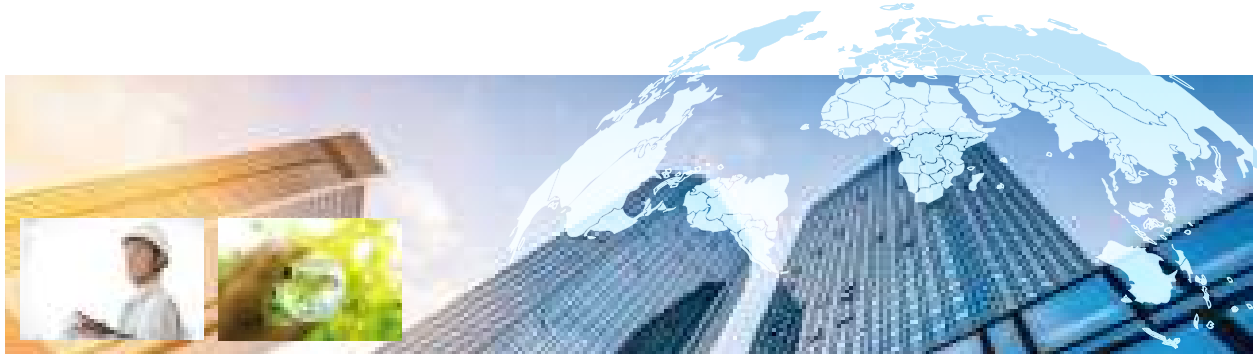


EP-F-004

Non-etched surface
Etched surface



Actual colors may differ slightly from those shown.



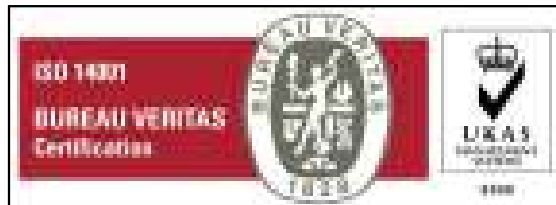
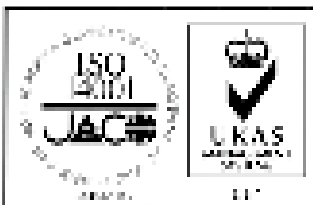
State-of-the-Art Factories... For the Environment. For Product Quality.

Mitsubishi Electric elevators and escalators are currently operating in approximately 90 countries around the globe. Built placing priority on safety, our elevators, escalators and building system products are renowned for their excellent efficiency, energy savings and comfort. The technologies and skills cultivated at the Inazawa Works in Japan and 12 global manufacturing factories are utilized in a worldwide network that provides sales, installation and maintenance in support of maintaining and improving product quality. As a means of contributing to the realization of a sustainable society, we consciously consider the environment in business operations, proactively work to realize a low-carbon, recycling-based society, and promote the preservation of biodiversity.

ISO9001/14001 certification

Mitsubishi Electric Corporation Inazawa Works has acquired ISO 9001 certification from the International Organization for Standardization based on a review of quality management. The plant has also acquired environmental management system standard ISO 14001 certification.

Mitsubishi Elevator Asia Co., Ltd. has acquired ISO 9001 certification from the International Organization for Standardization based on a review of quality management. The plant has also acquired environmental management system standard ISO 14001 certification.



MITSUBISHI ELECTRIC CORPORATION

HEAD OFFICE : TOKYO BLDG., 2-7-3, MARUNOUCHI, CHIYODA-KU, TOKYO 100-8310, JAPAN
www.MitsubishiElectric.com/elevator

⚠ Safety Tips: Be sure to read the instruction manual fully before using this product.



Revised publication effective Mar. 2021.
 Superseding publication of C-CL1-3-C9116-J Sep. 2019.
 Specifications are subject to change without notice.

©2021 Mitsubishi Electric Corporation