

Otis Elevator Company is the world's leading manufacturer and maintainer of people-moving products including elevators, escalators and moving walkways.

Founded more than 160 years ago by the inventor of the safety elevator, Otis offers products and services through its companies in close to 200 countries and territories, and maintains more than 1.8 million elevators and escalators worldwide.

Otis is a part of UTC Building & Industrial Systems, a unit of United Technologies Corp., a leading provider to the aerospace and building systems industries worldwide. For more information, visit www.otis.com or follow @OtisElevatorCo on Twitter.

OFFICES:

Head Office & Western Region (Mumbai Operations):
Otis Elevator Company (India) Ltd.,
9th Floor, Magnus Tower,
MindSpace, Link Road,
Malad (West), Mumbai - 400 064.
Tel.: 022 - 2844 9700 / 6679 5151,
Email: response@otis.com

Eastern Region:
Otis Elevator Co. (I) Ltd.
Victoria Park, Level 2
Block : GN, Plot no. 37/2
Sector V, Salt Lake
Kolkata - 700091
Tel.: 033 - 40524300

Northern Region:
271 & 272, Aggarwal Cyber Plaza-II,
C-7, Netaji Subash Place,
Pitampura, New Delhi - 110034.
Tel.: 011 - 46069000 / 46069211 /
46069100

Southern Region:
Otis House, MK Towers,
27, Langford Road, Shanti Nagar,
Bangalore - 560025.
Tel.: 080 - 22111190, 40314500

Western Region - Area Operations:
1st Floor, Amar Synergy Building,
Next to Vijay Sales & Sadhu Vaswani
Chowk, Near Pune Railway Station,
Pune - 411001.
Tel.: 020 - 67045100

MANUFACTURING:

Bengaluru:
No.92, Kiadb Industrial Estate,
Phase II, Jigani Industrial Area,
Anekal Taluk, Bangalore - 560105.
Tel.: 080 - 782 5401 / 5402 / 5403
Email: response@otis.com

SERVICE CENTRES:

Western Region:
Mumbai, Navi Mumbai,
Thane, Nashik.

Eastern Region:
Agartala, Angul, Bhubaneswar,
Bokaro, Dhanbad, Durgapur,
Guwahati, Jamshedpur,
Jhadsuguda, Kahalagaon, Kolkata,
Patna, Ranchi, Shillong, Siliguri.

Northern Region:
Agra, Aligarh, Allahabad, Amritsar,
Bareilly, Chandigarh, Dehradun,
Ghaziabad, Gurgaon, Gwalior,
Haridwar, Jalandhar, Jaipur, Jodhpur,
Jammu, Kanpur, Kota, Ludhiana,
Lucknow, Meerut, Moradabad,
New Delhi, Noida, Rohtak, Shimla,
Shaktinagar, Sonebhadra, Srinagar,
Udaipur, Varanasi.

Southern Region:
Bengaluru, Calicut, Chennai,
Coimbatore, Ernakulam, Erode,
Hubli, Hyderabad, Kaiga, Kottayam,
Madurai, Mangalore, Mysore,
Ootakamund, Pondicherry,
Quilon, Ramagundam, Salem,
Thiruvananthapuram, Thirunelveli,
Trichy, Trichur, Vellore, Vijaywada,
Vishakapatnam.

Western Region - Area Operations:
Ahmedabad, Ankleshwar,
Aurangabad, Bhopal, Goa, Indore,
Jabalpur, Kolhapur, Korba, Nagpur,
Pune, Rajkot, Raipur, Solapur, Surat,
Vadodara, Valsad.

GEN2[®] Nova

OTIS



www.otis.com

INDIA-EN-1018

© 2018 Otis Elevator Company



Exceptional. It's hard to define but exciting to experience. And that's exactly what you'll discover with the Gen2® Nova elevator from Otis.

The revolutionary Gen2 is everything you want in an elevator: compact, efficient, reliable. And a pleasure to ride.

The Gen2 elevator is transforming the industry we created more than 160 years ago. Perfect for residential use, it's among our best-selling elevators ever.

The reason is simple. The Gen2 is simply exceptional.



Space

The compact Gen2 system provides architects with greater design flexibility and building owners with more rentable space.



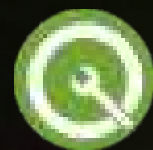
Efficiency

Our patented flat-belt technology, pioneering ReGen™ drives and gearless machines make the Gen2 elevator among the most energy-efficient elevators on the planet.



Comfort

Our systems minimize noise and vibration and render the elevator's movement barely perceptible, giving passengers what they're looking for – a quiet, comfortable ride.



Reliability

Built in ISO-certified factories with a lifetime of service in mind, every Gen2 elevator offers superior reliability.

The Gen2® Nova is best suited for residential applications.





80%
SMALLER

The Gen2 delivers superior performance in a space-saving design. Coated steel belts have a significantly smaller bending radius than wire rope. This engineering breakthrough paved the way for other innovations: our ultra-compact permanent magnet gearless machine is 80 percent smaller and more efficient than conventional geared machines. The steel belts also last twice as long as conventional steel ropes, without the need for any lubrication.



Compact machine-room configuration

The compact machine-room configuration reduces the space requirements for the Gen2 system to no larger than the hoistway footprint, reducing construction costs and optimizing rooftop space.



Machine-roomless configuration

The Gen2 machine-roomless elevator components are so compact, they fit inside the hoistway. This eliminates the need for an extra room on top of your building for elevator components. The result is a system that saves construction cost and frees up valuable floor space to support your design vision.



We take pride in our environment – from the crafted spaces inside a structure to the natural world outside. That’s why the new Gen2 system is designed to minimize its impact on the environment and maximize energy efficiency.

Reducing energy consumption by:

10x



Long-Life LED Lighting

LED illumination, standard on the Gen2 system, reduces energy consumption and lasts up to 10 times longer than conventional fluorescent lamps.

75%



The ReGen™ drive

Regenerative technology, pioneered by Otis and standard on the Gen2 system, uses up to 75 percent less energy than a conventional geared elevator while producing power with lower harmonic distortion, minimizing the impact on the building’s electrical system.

75%



Sleep Mode

Lights and fans are shut down when there’s no demand, making the LED lighting up to 75 percent more efficient than conventional lighting. The system seamlessly springs back to life with the press of a call button.

Zero

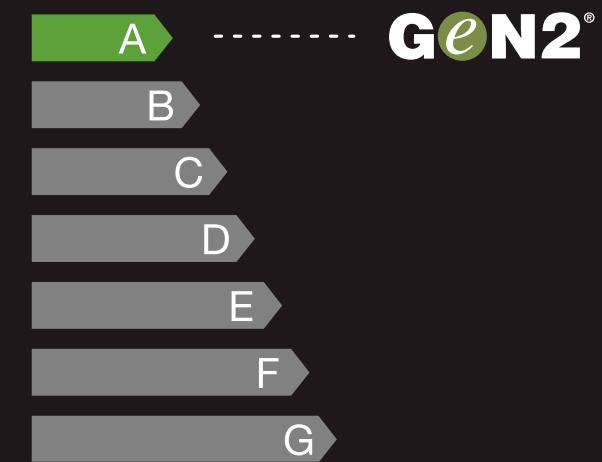


Lubrication

The Gen2 machine and coated steel belts require no additional lubrication, eliminating the need for storage, cleanup and disposal of hazardous waste.

Efficiency Rating

Measurements taken on Gen2 installations with standard configurations have earned Otis the highest VDI4707 efficiency-class rating.



Based on a 1000 kg at 1.75 m/s elevator with 15 stops.



COMFORT

The art of motion

We want people to enjoy the ride – to find in the Gen2 elevator a moment of quiet calm during their otherwise busy day. That's why we engineered the Gen2 system to be different.

Smooth travel

We replaced conventional steel ropes with coated flat steel belts, eliminating the noise created by the metal-to-metal contact of conventional systems. The low-noise gearless machine, mounted on isolation rubber pads, also reduces vibration in the building and minimizes noise levels in adjacent rooms.





RELIABILITY

Manufactured exclusively at our ISO-certified factories, the Gen2 system is the result of our most advanced thinking, global experience and deep engineering expertise – all to ensure you get exceptional Otis performance, day after day. Gen2® Nova is manufactured at our Bengaluru factory.

Pulse™

The Pulse system continuously monitors the elevator's coated steel belts to ensure their integrity, maintain safe, efficient operation and reduce inspection downtime.

Designed to deliver – year after year

Automatic rescue operation

The battery-powered Automatic Rescue Operation system delivers passengers safely to the nearest floor during a power failure.

Safety systems

The door is an elevator's most important safety feature. The Gen2 system uses a screen of infrared beams to reopen the doors immediately when an object breaks the invisible plane. The elevator's locking system blocks the doors from being opened from inside the cab if it stops between floors – another key safety feature.



Whether we installed it last week or last century, our name is on every product, so we make sure our service stands behind it.

An industry benchmark

Otis is committed to ensuring optimal equipment performance for the lifetime of the elevator. Our innovative technologies let Otis engineers precisely identify or anticipate possible issues. And when our skilled mechanics arrive at customer sites, they are committed to making repairs as quickly as possible.

The right maintenance at the right time

The Otis Maintenance Management System is a predictive and preventative system, designed to reduce the number of service calls – and downtime. Our mechanics are assigned specific elevator units, keeping response time to a minimum. We'll focus on your elevator so you can focus on your building.

Otis genuine parts

Our service teams are supported by the worldwide Otis supply chain that stocks a comprehensive range of thoroughly tested genuine spare parts.

Customer support

Service comes first with OTISLINE® – our 24-hour call center. We pride ourselves on providing 24/7 dedicated customer support and prompt professional service.

Gen2™ Nova

MODEL	MR	MRL
Passenger	5, 6, 8, 9*, 10, 13, 15	
Duty - Kgs	340, 408, 544, 612*, 680, 884, 1020	
Speed	1.00 MPS	
Controller Type	Microprocessor Based	
Drive	VF Regenerative (Closed Loop)	
Power Supply	400/415 Volts (3 Phase AC)	
Operation	Full Collective	
Car Group	Simplex / Duplex / Triplex	
Machine	PM Gearless	
Ropes Type	Flat coated Steel Belt	
Max. Stop	21(Same side opening)	21(Same side opening)
Max. Rise	60 Metres	60 Metres
Car Finish	Powder painted / Stainless steel / Metal effects	
Ventilation	Cross Flow fan	
False Ceiling	Base: CD 41; Option CD 35 and CD 42	
Entrance Height	2000 mm (2100 mm option)	
Car Height	2200 mm (2300 mm option)	
Hand Rails	5 & 6 Passenger only at rear: Base - Painted: Option - SS 8, 9, 10, 13, 15 Passenger Base config - rear: Base - Painted: Option - SS 3 side option Base - Painted: Option - SS	
Flooring	Vinyl as standard / Option provided for Recess in flooring (Marble, Granite and Granamite)	
Fire Rated	As applicable per Code (Fire rating of 60 mins & 120 mins)	
Door Operator	DC Door operator	
COP Type	Box Type - SS finish	
COP Buttons	Round Illuminated Button (Blue Colour)	
Car Position Indicator	Monochrome LCD	
Auto Fan Cut Off	Standard	
Hall Fixtures	HB with PI (Monochrome LCD)	
Hall Fixture Face Plates	Base: Pan type is SS #4 finish, Option: flat type in SS finish	



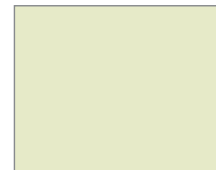
*9(612) DUTY IS AVAILABLE ONLY IN NOVA MRL WITH A MAXIMUM OF 11 STOPS AND 30 METERS OF RISE.

Standard

Base Colours



Munshell Grey



Cream



D. A. Grey

Advanced

Textured Colours



Dark Grey



Antique Copper



Broken White

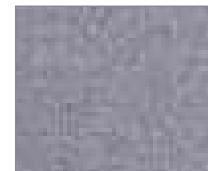


Siemens Grey

Classic Colours



Desert Sand



GP Silver Grey

Car operating panel



Push button with braille

Car position indicator

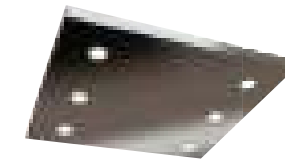


TFT-LCD Display (Base)

TFT-LCD Display (Option)

LCD Display (Color LCD - Option)

Ceilings



Base: CD 41
in powder painted ivory.
Options available in stainless steel mirror and hairline #4.



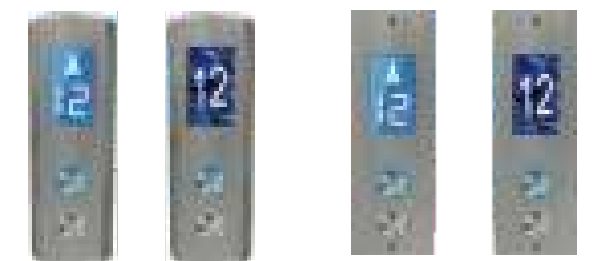
Option: CD 42
available in powder painted, stainless steel mirror, and hairline #4.



Option: CD 35
available in stainless steel mirror, and hairline #4.

Hall operating panel

Finish in hairline stainless steel with alphanumeric display.



Pan

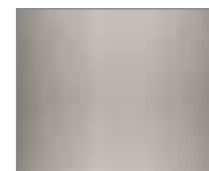
Flat

Handrails

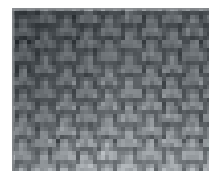


Positioned at the rear; in stainless steel mirror. (optional)

Metal finishes



Hairline



Honeycomb



Mirror



Mirror Gold



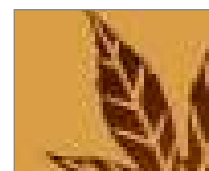
Interlock



Splendour Maze



Polka Delite



Maple Glory

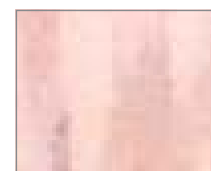


Egyptian Gold

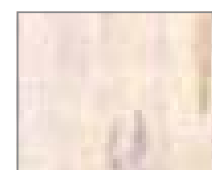
Flooring (vinyl)



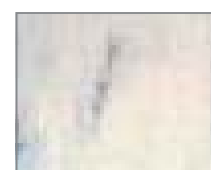
Sea Blue



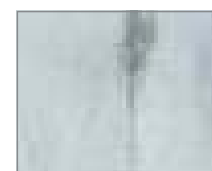
Pink



Almond



White



Grey



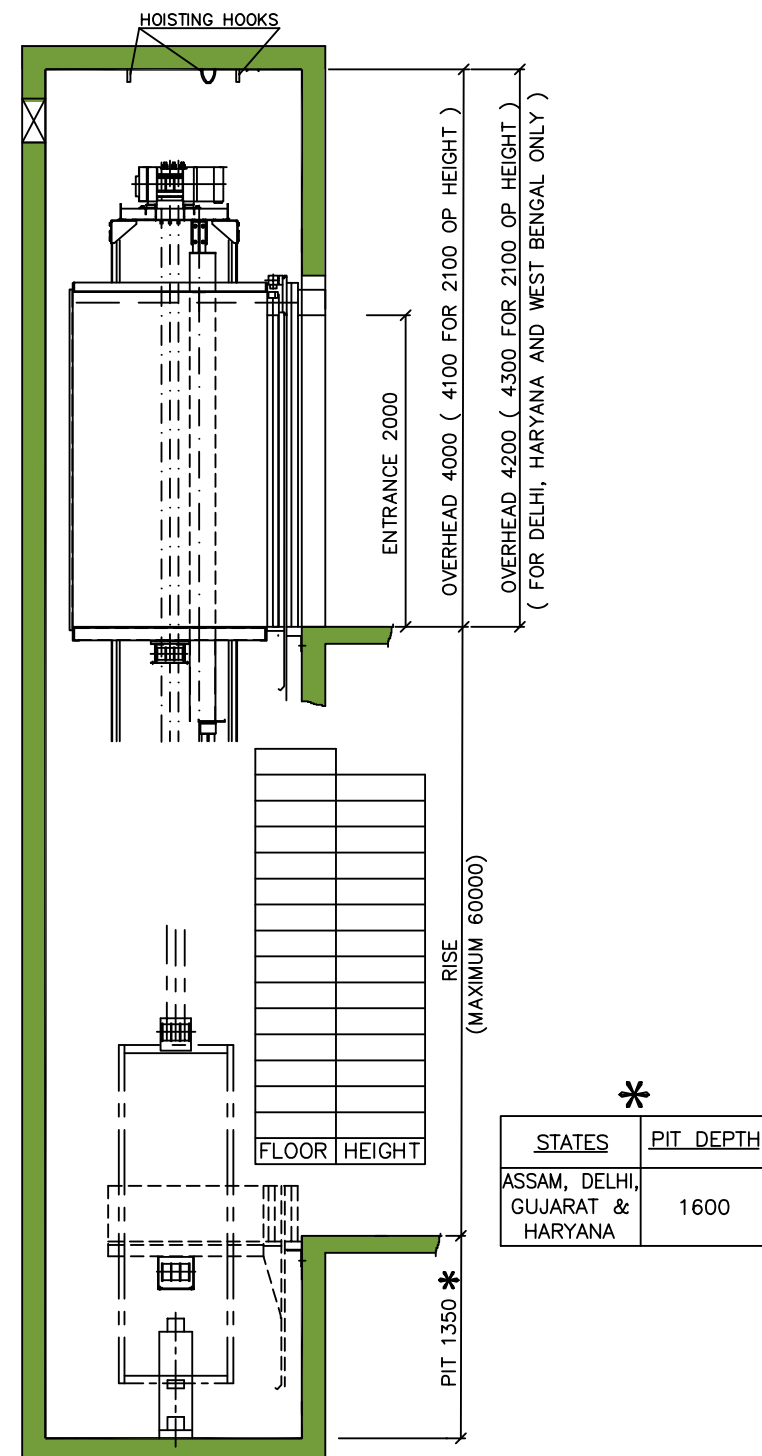
Steel Grey

ATMOS and AURA special aesthetics finishes also available in Gen2 Nova MRL
Colours and finishes shown are indicative. Please allow for minor variations.

Fixtures shown are representative. Actual design may vary according to elevator cab size.

PM GEARLESS: (MACHINE ROOMLESS): SPEED 1.00mps

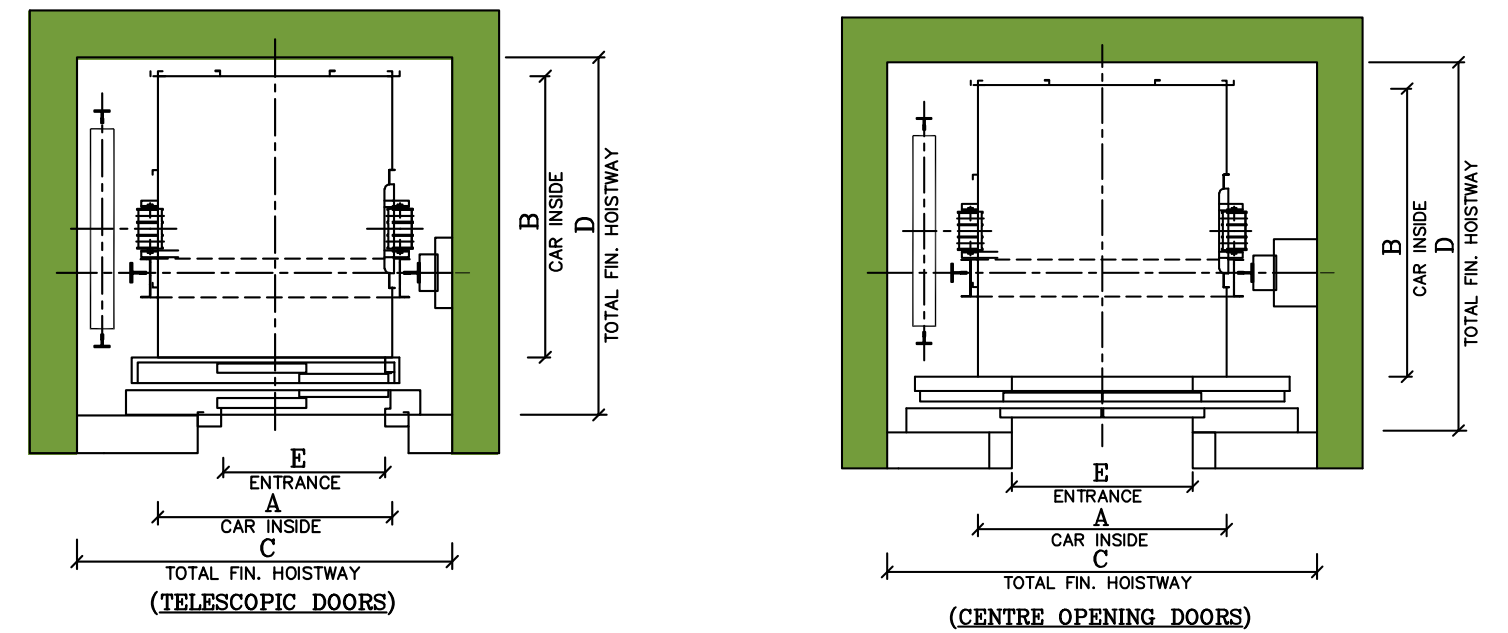
ELEVATION



REFER TO OTIS DETAILED DRAWING FOR ADDITIONAL INFORMATION

Details of products design are subject to change.

HOISTWAY PLAN



PERSONS	5 (D)			5 (W)		6		8 (D)		8 (W)	
LOAD kg	340			340		408		544		544	
A	950	950	950	1000	1000	1000	1100	1100	1100	1250	1250
B	1000	1000	1000	950	1100	1100	1300	1300	1300	1150	1150
C	1550	1600	1600	1600	1600	1600	1850	1700	1850	1850	1850
D	1400	1400	1400	1300	1450	1450	1650	1650	1650	1550	1550
E	700	700	800	700/800	700	800	800	800	800	800	800
DOOR	TLD	CLD	TLD	TLD	CLD/TLD	TLD	CLD	TLD	CLD	TLD	CLD

PERSONS	9*		10		13 (D)		13 (W)		15 (D)		15 (W)	
LOAD kg	612		680		884		884		1020		1020	
A	1200	1100	1100	1100	1100	1600	1000	1000	1000	1000	1600	1600
B	1300	1600	1600	2000	2000	1350	2400	2400	2400	2400	1500	1500
C	1800	1850	1750	1850	1750	2300	1700	1850	2000	2300	2300	2300
D	1650	1950	1950	2350	2350	1700	2750	2750	2750	2750	1850	1850
E	800	800	800	800	800/900	900	900	800	900	900	900	900
DOOR	CLD	CLD	TLD	CLD	TLD	CLD	TLD	CLD	TLD	CLD	CLD	CLD

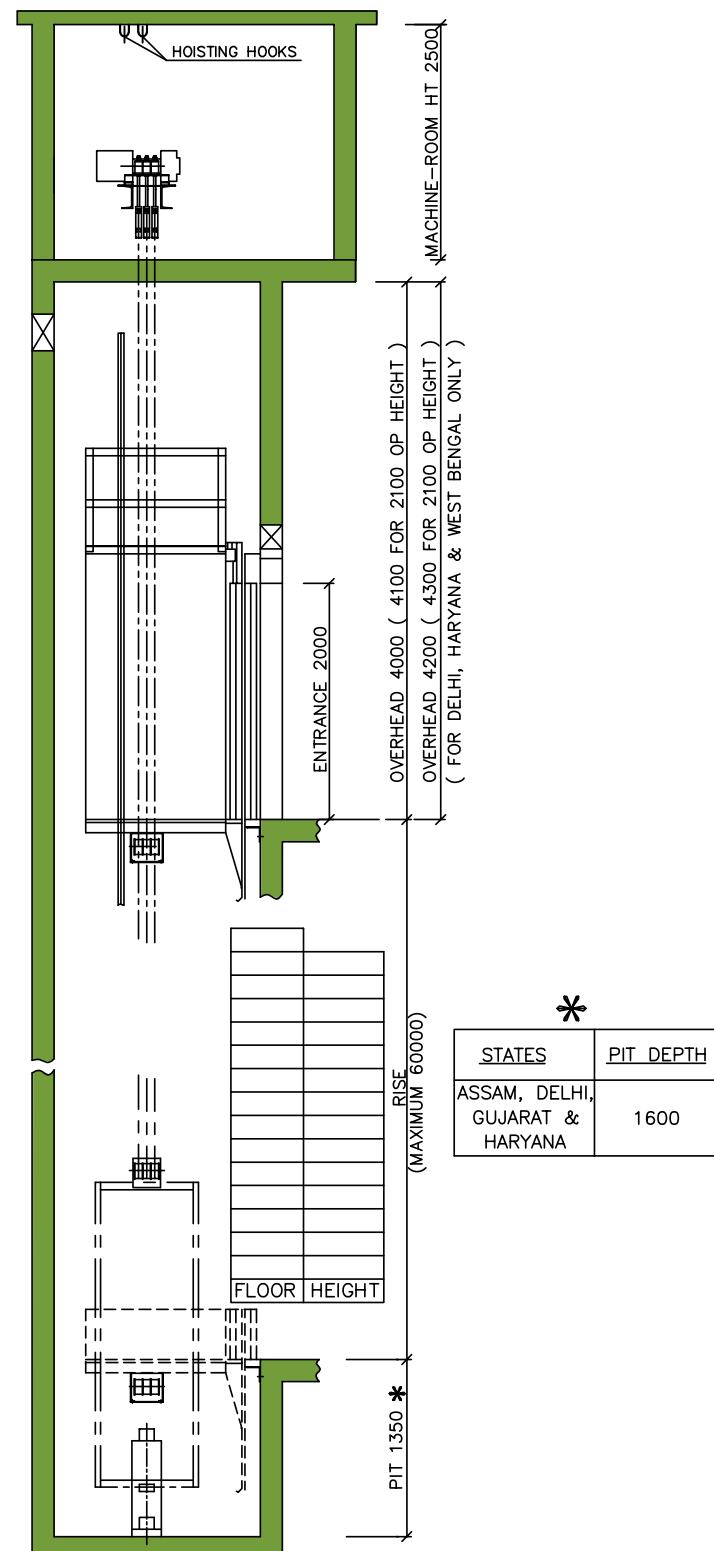
*9(612) DUTY IS AVAILABLE WITH A MAXIMUM OF 11 STOPS AND 30 METERS OF RISE.

TLD=TELESCOPIC DOORS
CLD=CENTRE OPENING DOORS

Details of products design are subject to change.

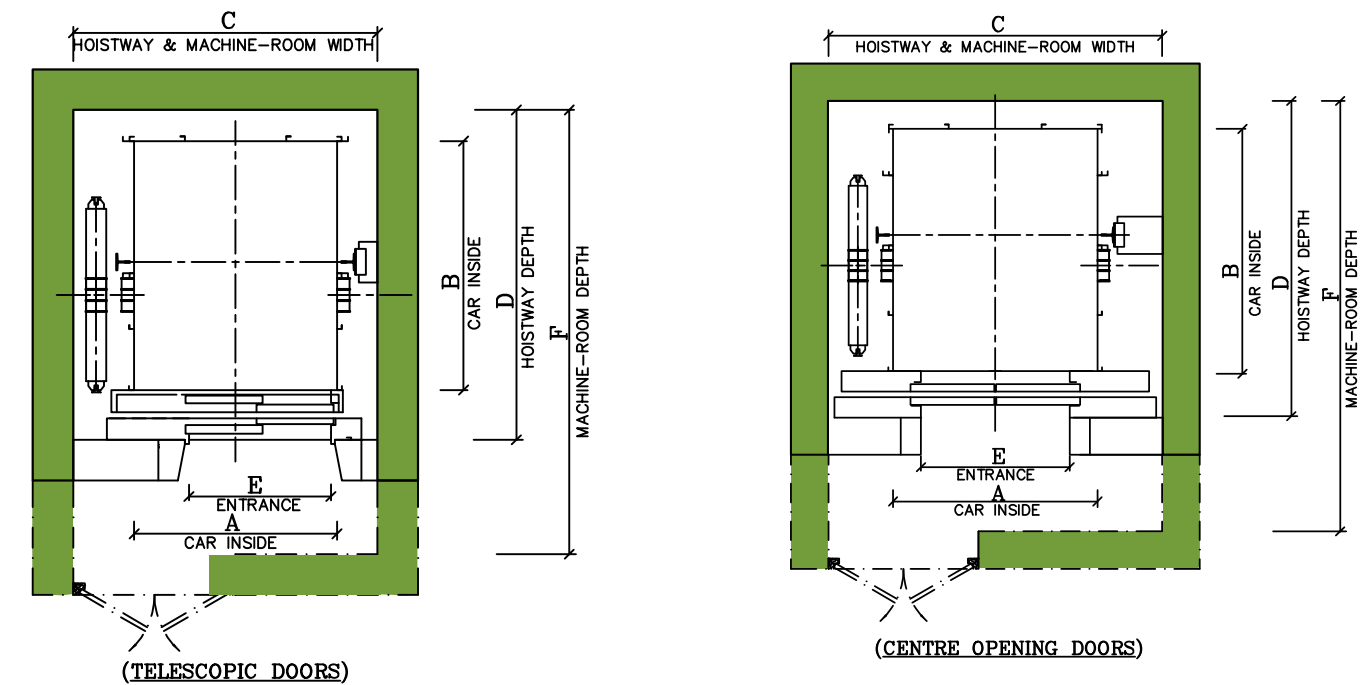
PM GEARLESS: (MACHINE ROOM): SPEED 1.00mps

ELEVATION



REFER TO OTIS DETAILED DRAWING FOR ADDITIONAL INFORMATION
Details of products design are subject to change.

HOISTWAY PLAN



PERSONS	5	6	8	10	13 (D)	13 (W)	15 (D)		
LOAD kg	340	408	544	680	884	884	1020		
A	1000	1000	1000	1000	1100	1300	1100	1600	1000
B	950	950	1050	1050	1300	1350	2000	1350	2400
C	1600	1500	1600	1500	1850	1850	1850	2200	1700
D	1400	1400	1400	1400	1650	1700	2350	1700	2750
E	700	700	700	700	800	800	800	900	900
F	1900	1900	1900	1900	2150	2200	2850	2200	3250
DOOR	CLD	TLD	CLD	TLD	CLD	CLD	CLD	CLD	TLD

TLD=TELESCOPIC DOORS
CLD=CENTRE OPENING DOORS

REFER TO OTIS DETAILED DRAWING FOR ADDITIONAL INFORMATION
Details of products design are subject to change.

