

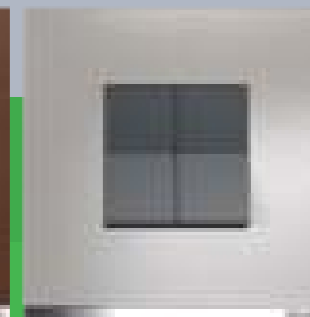


Life Is On



Unica Pure

Irresistibly Beautiful



Schneider Electric India Pvt. Ltd.
Corporate Office
9th Floor, DLF Building No.10,
Tower C, DLF Cyber City, Phase II,
Gurgaon - 122002, Haryana.
Tel: 0124 3940400, Fax: 0124 4222036
www.schneider-electric.co.in

Customer Care Centre
Toll-free numbers: 1800 103 0011, 1800 425 4272
General number: 0124 4222040
Email: in.campaign@schneider-electric.com

schneider-electric.co.in

Life Is On



Irresistibly

Unica Pure

For sheer elegance, nothing comes close to the luxurious look and feel of Unica Pure. With a sleek, square design including faceplates made of real materials wood, metal and glass, the range introduces a truly sophisticated feeling to quality interiors.



Glass



Wood



Metal

Irresistibly

Beautiful

Authentic finishes - developed from the high quality natural material

Ingenious Design - Demarcated dolly depicting clear on/off mode of the switch

Signature Line - adding elegance & style

Adjoining (V) Feature Technology - ensuring perfect alignment of switches

Modish Colors - perfectly gel with neutral, accent wall colors and blends perfectly with any décor

Irresistibly

Safe & Sturdy

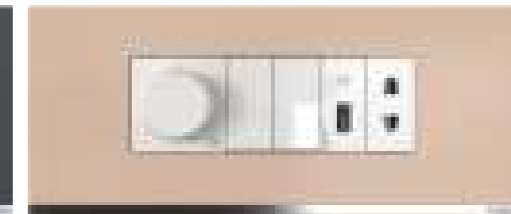
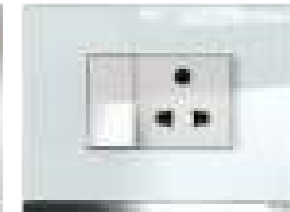
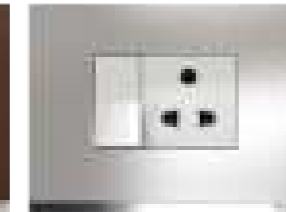
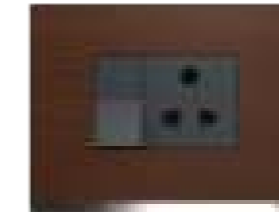
Self Piercing Terminal - ensuring completely safe, robust and fast installation

Binary Switch mechanism - Clear demarcation of On/Off Position with no play, making it more safe & durable

Facile & Guarded Technology - reduces tension in the switch rocker & increases the longevity of the switch (1Mn+ clicks)

Life Guard Sockets - Eliminate possibility of Single Pin Insertion making it extra safe for children.

Binare & Insulated Gridplate - Robust, rigid & shock proof gridplate, ensuring durable installation on the metal box





Irresistibly Easy



Key Hole Feature - Angular and linear adjustments of the gridplate can be easily achieved

Revolutionary Ease of Mounting - Screws can be installed first and then Gridplate can be mounted

Indicators & Markings - to simplify life of the installer and to ensure precise fitment

Irresistibly Sustainable

Green Premium - Complies to HIGHEST INTERNATIONAL STANDARD of Green Certification for manufactured products (RoHS, REACH, PEP, EoLI) and is 100% Recyclable - making it safe not only for your family but also the environment

Irresistibly Innovative

Future Ready - Features of Voice & Mobile control to ensure compatibility and fit with smart homes

Irresistibly Versatile

One Stop Shop - Extensive range covering all requirements across segments - be it residential, office, commercial or hospitality

*Provisional Price List, final one will be shared at the time of the commercial launch

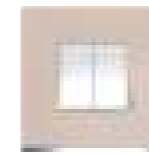
schneider-electric.co.in



Polar White



Volcanic Grey



Sandy Beige



Mocha Brown



Pearl Black



Aqua Glass



Pewter Grey



Rhodium Black



Oak

Description	Reference for Polar White	Unit LP [₹]	Reference for Volcanic Grey	Unit LP [₹]
6A Switches				
6AX 1 Way Switch	UNS61SW1M_WE	175	UNS61SW1M_GY	203
6AX 1 Way Switch With Indicator	UNS61SWL1M_WE	258	UNS61SWL1M_GY	303
6AX 2 Way Switch	UNS62SW1M_WE	222	UNS62SW1M_GY	248
10A Intermediate Switches				
10AX Intermediate Switch	UNS10SW1M_WE	945	UNS10SW1M_GY	1100
16A Switches				
16AX 1 Way Switch	UNS161SW1M_WE	258	UNS161SW1M_GY	303
16AX 1 Way Switch With Indicator	UNS161SWL1M_WE	309	UNS161SWL1M_GY	361
16AX 2 Way Switch, Polar White	UNS162SW1M_WE	327	UNS162SW1M_GY	385
16A Master Switch, 2 Way	UNS162MSWL1M_WE	756	UNS162MSWL1M_GY	894
Double Pole Switches				
20A Double Pole Switch With Indicator	UNS20DP2M_WE	584	UNS20DP2M_GY	688
32A Double Pole Switch With Indicator	UNS32DP2M_WE	894	UNS32DP2M_GY	1066
Motor Starter Switch				
Motor Starter	UNSMSTART2M_WE	1117	UNSMSTART2M_GY	1323
Bell Switches				
6A Bellpress, 1M	UNS6BP1M_WE	223	UNS6BP1M_GY	261
6A Bellpress With Indicator, 1M	UNS6BPL1M_WE	296	UNS6BPL1M_GY	351
6A Bellpress, 2M, Polar White	UNS6BP2M_WE	292	UNS6BP2M_GY	344
6A Bellpress With Indicator, 2M	UNS6BPL2M_WE	361	UNS6BPL2M_GY	423
Voice Control Switch				
Voice Control Switch	UNSVCTRLSW2M_WE	7813	UNSVCTRLSW2M_GY	8438
6A Sockets				
6A 3 Pin Universal Socket	UNS6SK3P2M_WE	313	UNS6SK3P2M_GY	361
6A 2 Pin Socket	UNS6SK2P1M_WE	313	UNS6SK2P1M_GY	361
6A 5 Pin Socket	UNS6SK5P2M_WE	359	UNS6SK5P2M_GY	438
6/ 16A Sockets				
6/16A Socket	UNS616SK2M_WE	375	UNS616SK2M_GY	466
20A & 25A Sockets				
20A 3 Pin Socket	UNS20SK3P2M_WE	481	UNS20SK3P2M_GY	557
25A 3 Pin Socket	UNS25SK3P2M_WE	516	UNS25SK3P2M_GY	602
International Sockets				
13A International Socket with Shutter	UNS13INTSK2M_WE	413	UNS13INTSK2M_GY	481



Polar White



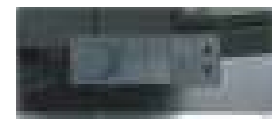
Volcanic Grey



Sandy Beige



Mocha Brown



Pearl Black



Aqua Glass



Pewter Grey



Rhodium Black



Oak

Description	Reference for Polar White	Unit LP [₹]	Reference for Volcanic Grey	Unit LP [₹]
USB Chargers				
2.1A 5V USB Charger, 2 Module	UNS21USB2P2M_WE	2355	UNS21USB2P2M_GY	2784
2.1A 5V USB Charger, 1 Module	UNS21USB1P1M_WE	1770	UNS21USB1P1M_GY	2097
Blank Plates				
Single Module Blank Plate	UNSLANK1M_WE	48	UNSLANK1M_GY	55
Fan Regulators				
4 Steps 360 Deg Fan Regulator, 1M	UNS4STFAN1M_WE	653	UNS4STFAN1M_GY	756
5 Steps 360 Deg Fan Regulator, 2M	UNS5STFAN2M_WE	1203	UNS5STFAN2M_GY	1066
Dimmers				
400W Dimmer for Incandescent, 1M	UNSDIM1M_WE	877	UNSDIM1M_GY	1031
100W Dimmer for LED, 1M	UNSLLEDDIM1M_WE	3431	UNSLLEDDIM1M_GY	3953
Emergency Light Indicator				
Emergency Light Module	UNSEMERGENCY2M_WE	-		
Network, Connectivity & Media Series				
RJ 11 (WITH Shutter)	UNSRJ11_1M_WE	206	UNSRJ11_1M_GY	241
RJ 45 (WITH Shutter), Cat 6	UNSRJ45_1M_WE	756	UNSRJ45_1M_GY	877
TV Socket Coaxial	UNSTVCOAX1M_WE	189	UNSTVCOAX1M_GY	223
Volume Control	UNSVOLCTRL2M_WE	1609	UNSVOLCTRL2M_GY	1884
HDMI	UNSHDMI_WE	1323	UNSHDMI_GY	1547
TV Socket Digital (F-Connector)	UNSCPTVDIG1M_WE	227	UNSCPTVDIG1M_GY	268
Hotel Series				
Skirt Light with LED, 2M	UNSSKTLT2M_WE	911	UNSSKTLT2M_GY	1066
Buzzer	UNSBUZZER2M_WE	894	UNSBUZZER2M_GY	1031
Cord Outlet	UNSCORD1M_WE	241	UNSCORD1M_GY	275
Door Chime	UNSCHIME2M_WE	378	-	
DND / MMR Indicator	UNSDM1M	1031	-	
DND/ MMR Switch	UNSDMSW2M_WE	413	UNSDMSW2M_GY	481
DND Switch	UNSDNDSW1M_WE	206	UNSDNDSW1M_GY	241
MMR Switch	UNSMMSW1M_WE	206	UNSMMSW1M_GY	241
Electronic Key Card Switch	UNSKKEYCARDSW_WE	5500	UNSKKEYCARDSW_GY	6359
Curtain Control Switch	UNSCURTAINSW2M_WE	653	UNSCURTAINSW2M_GY	756
Shaver Socket	UNSSHAYER_WE	4984	UNSSHAYER_GY	5878
PIR Motion Sensor	UNSPIR_WE	3953	-	
4 Sockets + 1 Switch Prewired, 9M	UNS4SK1SW9M_WE	1959	-	
1 Socket + 1 Switch Prewired, 3M, Polar White	UNS1SK1SW3M_WE	1238	-	

Description	Reference	Unit LP [₹]
Neon Phase Indicator		
Phase Indicator, Red	UNSPHASER1M	327
Phase Indicator, Green	UNSPHASEG1M	327
Phase Indicator, Yellow	UNSPHASEY1M	327

Description	Reference for Aqua Glass	Unit LP [₹]	Reference for Pearl Black Glass	Unit LP [₹]
Cover Plates				
1 Module Glass Surround and Gridplate	UNPCP1M_GW	1088	UNPCP1M_GB	1266
2 Module Glass Surround and Gridplate	UNPCP2M_GW	1209	UNPCP2M_GB	1406
3 Module Glass Surround and Gridplate	UNPCP3M_GW	1372	UNPCP3M_GB	1547
4 Module Glass Surround and Gridplate	UNPCP4M_GW	1451	UNPCP4M_GB	1688
6 Module Glass Surround and Gridplate	UNPCP6M_GW	2540	UNPCP6M_GB	2953
8 Module Glass Surround and Gridplate, Linear	UNPCP8ML_GW	2862	UNPCP8ML_GB	3328
8 Module Glass Surround and Gridplate, Square	UNPCP8MSQ_GW	3628	UNPCP8MSQ_GB	4219
12 Module Glass Surround and Gridplate	UNPCP12M_GW	4475	UNPCP12M_GB	5203

Description	Reference for Pewter Grey Metal	Unit LP [₹]	Reference for Rhodium Black Metal	Unit LP [₹]
Cover Plates				
1 Module Metal Surround and Gridplate	UNPCP1M_ML	1767	UNPCP1M_MD	1767
2 Module Metal Surround and Gridplate	UNPCP2M_ML	1948	UNPCP2M_MD	1948
3 Module Metal Surround and Gridplate	UNPCP3M_ML	2227	UNPCP3M_MD	2227
4 Module Metal Surround and Gridplate	UNPCP4M_ML	2356	UNPCP4M_MD	2356
6 Module Metal Surround and Gridplate	UNPCP6M_ML	4101	UNPCP6M_MD	4101
8 Module Metal Surround and Gridplate, Linear	UNPCP8ML_ML	4599	UNPCP8ML_MD	4599
8 Module Metal Surround and Gridplate, Square	UNPCP8MSQ_ML	5845	UNPCP8MSQ_MD	5845
12 Module Metal Surround and Gridplate	UNPCP12M_ML	7227	UNPCP12M_MD	7227

Description	Reference for Oak Wood	Unit LP [₹]
Real Material Cover Plates		
1 Module Wood Surround and Gridplate	UNPCP1M_WD	3094
2 Module Wood Surround and Gridplate	UNPCP2M_WD	3577
3 Module Wood Surround and Gridplate	UNPCP3M_WD	3938
4 Module Wood Surround and Gridplate	UNPCP4M_WD	4298
6 Module Wood Surround and Gridplate	UNPCP6M_WD	7514
8 Module Wood Surround and Gridplate, Linear	UNPCP8ML_WD	8466
8 Module Wood Surround and Gridplate, Square	UNPCP8MSQ_WD	10730
12 Module Wood Surround and Gridplate	UNPCP12M_WD	13256

Description	Reference for Painted Sandy Biege	Unit LP [₹]	Reference for Painted Mocha Brown	Unit LP [₹]	Reference for Molded Polar White	Unit LP [₹]	Reference for Molded Volcanic Grey	Unit LP [₹]
Cover Plates								
1 Module Plastic Surround and Gridplate	UNSCP1M_CL	309	UNSCP1M_CD	309	UNSCP1M_WE	155	UNSCP1M_GY	233
2 Module Plastic Surround and Gridplate	UNSCP2M_CL	344	UNSCP2M_CD	344	UNSCP2M_WE	172	UNSCP2M_GY	259
3 Module Plastic Surround and Gridplate	UNSCP3M_CL	394	UNSCP3M_CD	395	UNSCP3M_WE	197	UNSCP3M_GY	295
4 Module Plastic Surround and Gridplate	UNSCP4M_CL	413	UNSCP4M_CD	413	UNSCP4M_WE	206	UNSCP4M_GY	315
6 Module Plastic Surround and Gridplate	UNSCP6M_CL	721	UNSCP6M_CD	724	UNSCP6M_WE	361	UNSCP6M_GY	544
8 Module Plastic Surround and Gridplate, Linear	UNSCP8ML_CL	817	UNSCP8ML_CD	817	UNSCP8ML_WE	406	UNSCP8ML_GY	609
8 Module Plastic Surround and Gridplate, Square	UNSCP8MSQ_CL	1033	UNSCP8MSQ_CD	1033	UNSCP8MSQ_WE	516	UNSCP8MSQ_GY	776
9 Module Plastic Surround and Gridplate	-	-	-	-	UNSCP9M_WE	688	UNSCP9M_GY	1035
12 Module Plastic Surround and Gridplate	UNSCP12M_CL	1278	UNSCP12M_CD	1278	UNSCP12M_WE	636	UNSCP12M_GY	957
16 Module Plastic Surround and Gridplate	UNSCP16M_CL	1750	UNSCP16M_CD	1750	UNSCP16M_WE	877	UNSCP16M_GY	1316
18 Module Plastic Surround and Gridplate	UNSCP18M_CL	1875	UNSCP18M_CD	1875	UNSCP18M_WE	916	UNSCP18M_GY	1418