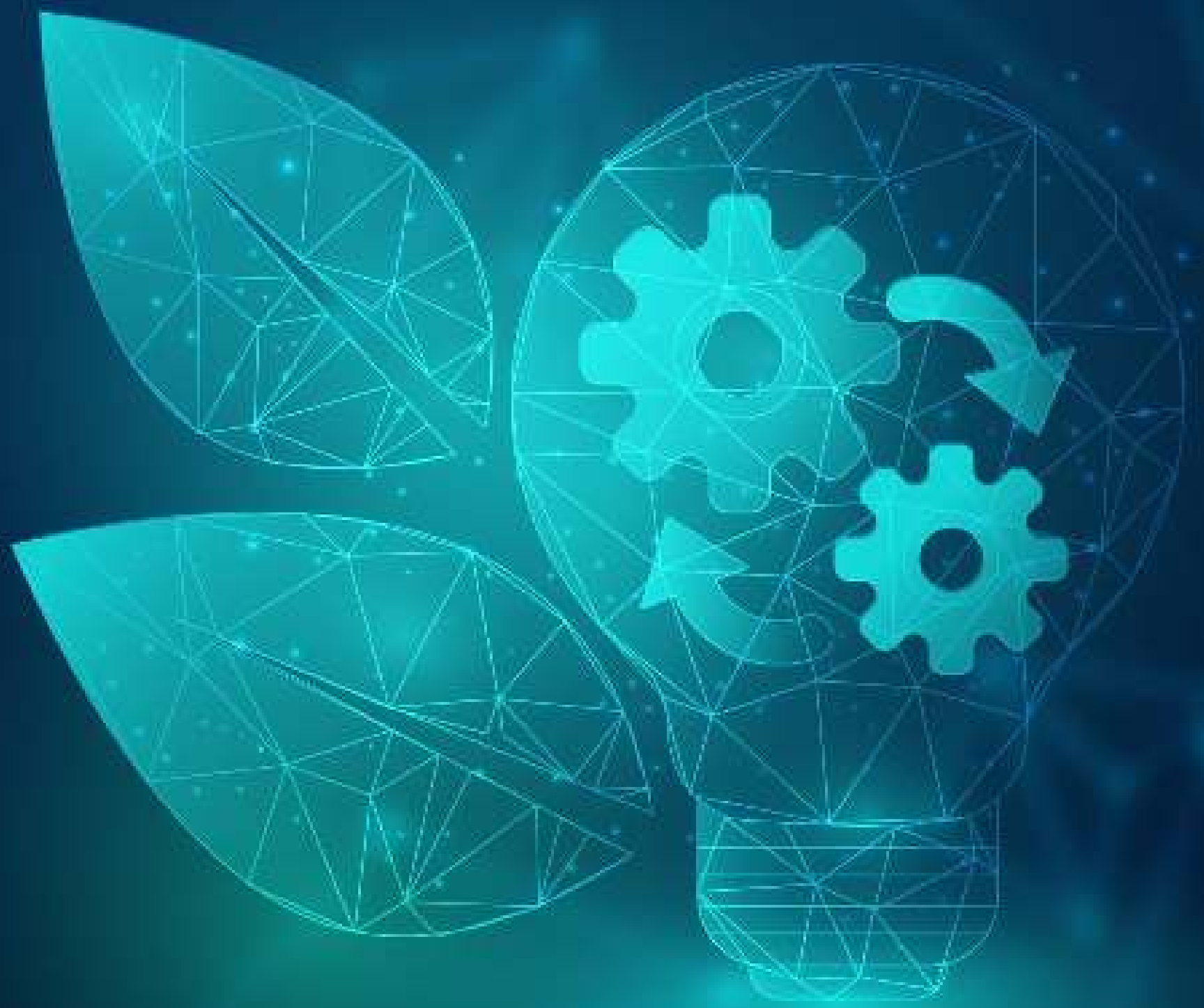


Unmatched Sustainability



Digital Expertise

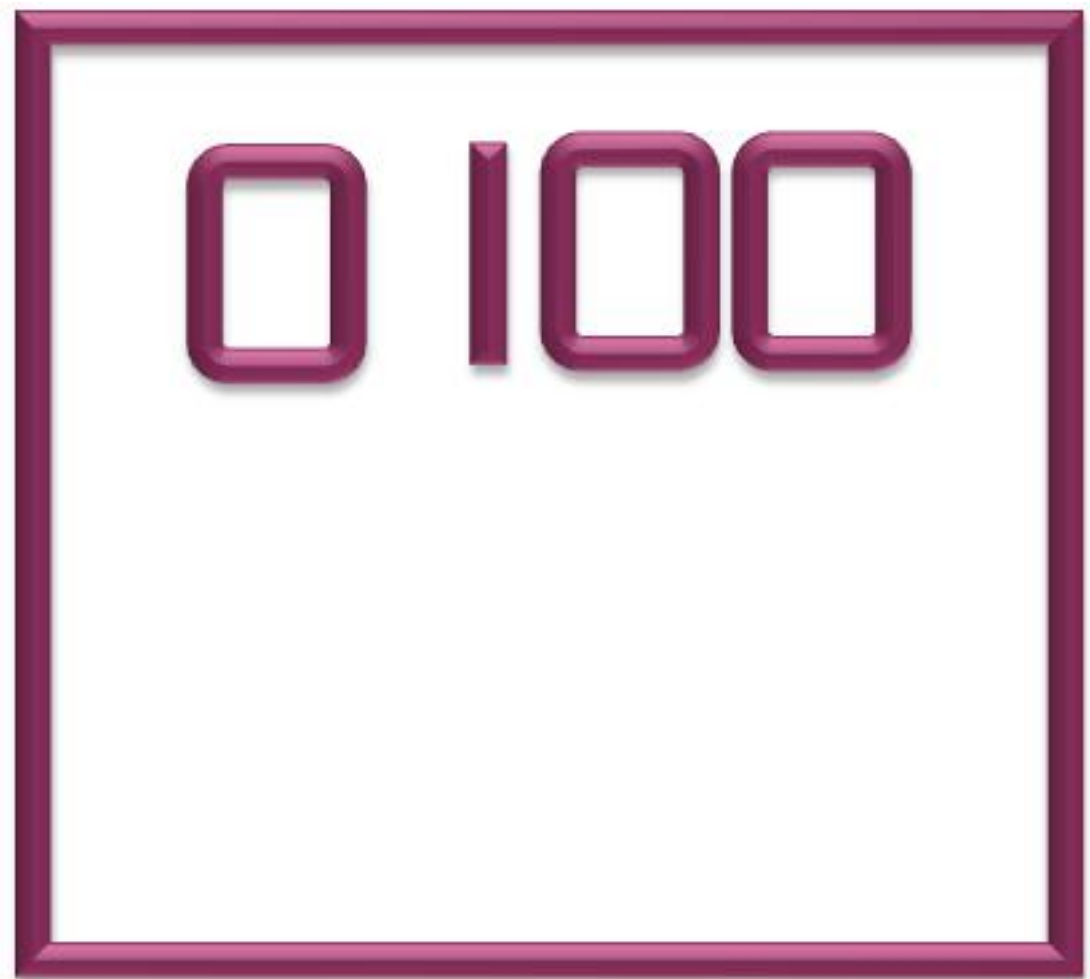


Rishabh Instruments Pvt. Ltd.

Price List w.e.f 1st January 2021

Index

Digital Expertise	Page No
Digital Panel Meters	02
Multi-Function Meters	05
Electrical Transducers	10
Isolators	14
Controllers	15
Protection and Monitoring Relays	16
Battery Chargers and Power Supplies	20
Terms and conditions	22



Model	KMAT	Size	Description	Auxiliary Supply	LP (INR)
Programmable AC Ammeter					
Rish Eine I	EP99	48 x 96 x 68 mm	Input : 1A /5A (Programmable) Display : 14 mm LED Display 1 Phase Network Accuracy Class : 1.0 4 Digit	40...300V AC/DC or 20...40V AC / 20...60V DC	770
		96 x 96 x 40 mm	Input 1A /5A (Programmable) Display : 14 mm LED Display 3Ph 3W/4W Network Accuracy Class : 1.0 4 Digit		1,270
		48 x 96 x 68 mm	Input : 100mA (Primary - 63 / 125 / 250A programmable) Display : 14 mm LED Display 3Ph 3W/4W Network Accuracy Class : 0.5 4 Digit		1,400
Programmable AC Voltmeter					
Rish Eine V	EP99	48 x 96 x 68 mm	Input : 57.5 -300 V L-N (Programmable) & 600V LN (Fixed) Display : 14 mm LED Display 1 Phase Network Accuracy Class : 1.0 4 Digit	40...300V AC/DC or 20...40V AC / 20...60V DC	770
		96 x 96 x 40 mm	Input : 100- 500 V L-L (Programmable) Display : 14 mm LED Display 3Ph 3W/4W Network Accuracy Class : 1.0 4 Digit		1,270
Non- Programmable AC Ammeter					
Rish ACI	DA14	72 x 144 x 94 mm	Input : I / 5A (To be specified while ordering only) Display : 26 mm LED Display Single Phase Network Accuracy Class : 1 4 1/2 Digit	110 / 230V AC	3,600
				24 / 110 / 220V DC	4,550
Non- Programmable AC Voltmeter					
Rish ACV	DA14	72 x 144 x 94 mm	Input : 110 / 240 / 500V (To be specified while ordering only) Display : 26 mm LED Display Single Phase Network Accuracy Class : 1 4 1/2 Digit	110 / 230V AC	3,600
				24 / 110 / 220V DC	4,550
Optional Accessories			Accuracy Class 0.5 for Rish Eine & Rish ACI / ACV 72x144		210
			400Hz for Rish Eine & Rish ACI/ACV 72 x 144 only		200
			Side mounting clamp (Applicable for 96 x 96mm size)		20
Programmable DC Ammeter					
Rish Eine +	EI99	96 x 96 x 35 mm 48 x 96 x 138 mm	Input : -10...0...+10mA / -20...0...+20mA / 4...20mA / -1...0...+1A / -5...0...+5A Accuracy Class : 0.5 4 Digit (Input range to be specified while ordering only)	40...300VAC/DC or 20...40VAC & 20...60VDC	1,180

Model	KMAT	Size	Description	Auxiliary Supply	LP (INR)
Non - Programmable DC Ammeter					
Rish ADC	DD14	48 x 96 x 138 mm	Input : 0 - 20 & 4 - 20mA Display : 14 mm LED Display Accuracy Class : 0.1 4 1/2 Digit	110 / 230V AC	1,980
				24 / 110 V DC	2,590
Rish ADC	DD14	96 x 96 x 55 mm	Input : 0 - 20 & 4 - 20mA Display : 14 mm LED Display Accuracy Class : 0.1 4 1/2 Digit	110 / 230V AC	2,100
				24 / 110 V DC	2,680
Rish ADC	DD14	72 x 144 x 94 mm	Input : 0 - 20 & 4 - 20mA Display : 26 mm LED Display Accuracy Class : 0.1 4 1/2 Digit	110 / 230V AC	3,950
				24 / 110 V DC	4,640
Programmable DC Voltmeter					
Rish Eine +	EI99	96 x 96 x 35 mm 48 x 96 x 68 mm	Input : -75...0...+75mV / -150...0...+150mV / -5...0...+5V / -10...0...+10V / 0...500V / 0...1000V Accuracy Class : 0.5 4 Digit (Input range to be specified while ordering only)	40...300VAC/DC or 20...40VAC & 20...60VDC	1,180
Non - Programmable DC Voltmeters					
Rish VDC C	DD14	48 x 96 x 138 mm	Input : 0 - 60 / 75 / 150 / 200mV Display : 14 mm LED Display Accuracy Class : 0.1 4 1/2 Digit	110 / 230V AC	2,040
				24 / 110 V DC	2,660
Rish VDC F	DD14	48 x 96 x 138 mm	Input : 0 - 2 / 20 / 200 / 500 / 1000V Display : 14 mm LED Display Accuracy Class : 0.1 4 1/2 Digit	110 / 230V AC	2,130
				24 / 110 V DC	2,790
Rish VDC C	DD14	96 x 96 x 55 mm	Input : 0 - 60 / 75 / 150 / 200mV Display : 14 mm LED Display Accuracy Class : 0.1 4 1/2 Digit	110 / 230V AC	2,130
				24 / 110 V DC	2,760
Rish VDC F	DD14	96 x 96 x 55 mm	Input : 0 - 2 / 20 / 200 / 500 / 1000V Display : 14 mm LED Display Accuracy Class : 0.1 4 1/2 Digit	110 / 230V AC	2,130
				24 / 110 V DC	2,760
Rish VDC C	DD14	72 x 144 x 94 mm	Input : 0 - 60 / 75 / 150 / 200mV Display : 26 mm LED Display Accuracy Class : 0.1 4 1/2 Digit	110 / 230V AC	3,910
				24 / 110 V DC	4,590
Rish VDC F	DD14	72 x 144 x 94 mm	Input : 0 - 2 / 20 / 200 / 500 / 1000V Display : 26 mm LED Display Accuracy Class : 0.1 4 1/2 Digit	110 / 230V AC	3,910
				24 / 110 V DC	4,590



Model	KMAT	Size	Description	Auxiliary Supply	LP (INR)
Power DPM					
Power DPM	PP44	96 x 96 x 80 mm	Input : 63.5 / 133 / 239.6 / 254V L-N 110 / 230 / 415 / 440V L-L & 1 or 5A Display : 11 mm or 20 mm LED Display Single & 3Ph 3W/4W Network Accuracy Class : 1) KW / KVA - $\pm 0.5\%$ of range 2) KVAr - $\pm 1\%$ of range Power Range : Max 694.4 MVA for 3 Phase and 333 MVA for 1Phase according to CT/PT Ratio 4 Digit	110 / 230VAC	3,740
				12 - 48VDC 100 - 250 VAC/DC	4,500
Power DPM	PP44	72 x 144 x 78 mm	Input : 63.5 / 133 / 239.6 / 254V L-N 110 / 230 / 415 / 440V L-L & 1 or 5A Display : 26 mm LED Display Single & 3Ph 3W/4W Network Accuracy Class : 1) KW / KVA - $\pm 0.5\%$ of range 2) KVAr - $\pm 1\%$ of range Max 694.4 MVA for 3 Phase and 333 MVA for 1Phase according to CT/PT Ratio 4 Digit	45...300VAC/DC or 20...40VAC & 20...60VDC	5,040
Power Factor DPM					
PF DPM	PF44	96 x 96 x 80 mm	Input : 63.5 / 133 / 239.6 / 254V L-N 110 / 230 / 415 / 440V L-L & 1 or 5A Display : 11 mm or 20 mm LED Display Single & 3Ph 3W/4W Network Accuracy Class : $\pm 2^\circ$ 4 Digit	110 / 230VAC	3,910
				12 - 48VDC 100 - 250 VAC/DC	4,500
PF DPM	PF44	72 x 144 x 78 mm	Input : 63.5 / 133 / 239.6 / 254V L-N & 5A 110 / 230 / 415 / 440V L-L & 5A Display : 26 mm LED Display Single & 3Ph 3W/4W Network Accuracy Class : $\pm 2^\circ$ 4 Digit	45...300VAC/DC or 20...40VAC & 20...60VDC	5,180
Frequency DPM					
Rish DPM Hz	DH10	48 x 96 x 68 mm	Input : 50...500V Range: 10...500Hz Accuracy : $\pm 0.5\text{Hz} \pm 1$ Digit 4 Digit	40...300V AC/DC 20...40V AC / 20...60V DC	1,290
Rish DPM Hz	DH10	96 x 96 x 55 mm			
Rish DPM Hz	DH10	72 x 144 x 78 mm			
Optional Accessories			SPAR-SD00-0235 SIDE CLAMP ASSLY RISH DELTA - Side mounting clamp (Applicable for 96 x 96mm size)		20




KMAT	Model	Description	Auxiliary Supply	LP (INR)
LED Meters				
Basic Range				
VF10	Rish Optima VAF	Input : 100...500 V L-L 1 / 5A 3 Line LED Display 3 Digit Single Ph & 3Ph 3W/4W Network Accuracy Class : 1 Parameters : VAF + RH + OH + NI + MM + RPM	40 - 300V AC/DC or 20-40 V AC/20-60 V DC	1,500
DL10	Rish Delta VAF	Input : 100...500 V L-L 1 / 5A 3 Line LED Display Single Ph & 3Ph 3W/4W Network Accuracy Class : 1 Parameters : VAF + RH + OH + NI + MM + RPM		2,050
DL20	Rish Delta Power	Input : 100...500 V L-L 1 / 5A 3 Line LED Display Single Ph & 3Ph 3W/4W Network Accuracy Class : 1 Parameters : VAF + kW + kVA + PF + PA + RH + OH + NI + MM + RPM	40 - 300V AC/DC or 12- 48 V DC	3,090
DL30	Rish Delta Energy	Input : 100...500 V L-L 1 / 5A 3 Line LED Display Single Ph & 3Ph 3W/4W Network Accuracy Class : 1 Parameters : VAF + kW + kVA + kWh + kVAh + PF + PA + RH + OH + NI + MM + RPM + DM + MD		5,330
AC Energy Meter				
EM90	EM 3490	Input : 100 / 230 / 415 / 440 V L-L for 3Ph 3W/4W or 110 / 240 V L-N for Single Phase 1A / 5A Counter type Energy Meter with Fixed CT Ratio Accuracy Class : 1 Parameters : kWh	Self Powered AC	3,340
EM91	EM 3490SS	Input : 100 / 230 / 415 / 440 V L-L 1 / 5A Energy Meter with LED Display Single Ph & 3Ph 3W/4W Network Accuracy Class : 1 Parameters : kWh	110V/230V/380V AC or 12 - 48V DC / 100-250V AC/DC	4,030
EM92	EM 3490DS	Input : 100 / 230 / 415 V L-L 1 / 5A Dual Source Energy Meter with LED Display Single Ph & 3Ph 3W/4W Network Accuracy Class : 1 Parameters : VAF + kW + kVA + kWh + kVAh + PF + RH + OH + NI		5,060
DC Energy Meter				
EM 93	Rish EMDC -6001	Basic Model 6001 4 Channel (without USB RTC & In-built Memory for Data logging) Input Voltage : 10-60 / 61-200 / 201-1000V DC Accuracy Class : 1 Parameters : VA + kW + kWh + RH + OH + NI + DM	60...300V AC/DC or 12 - 70 VDC	7,190
EM 93	Rish EMDC -6002	Higher Model 6002 4 Channel (with USB + RTC + In-built Memory for Data logging) Input Voltage : 10-60 / 61-200 / 201-1000V DC Accuracy Class : 1 Parameters : VA + kW + kWh + RH + OH + NI + DM + MD		10,070
Advanced Range				
MA3A	Rish Master 3430	Input : On site Programmable (Voltage - 57.7 - 346 VL-N) (Current - 1/5A) Single Phase Network Accuracy Class : 1 Parameters : VAF + kW + kVA + kWh + kVAh + PF + PA + MM + NC + THD	60- 300V AC/DC or 12-60 V AC/DC	6,110
		Input : On site Programmable (Voltage - 100 - 600 V L-L) (Current - 1/5A) 3Ph 3W/4W Network Accuracy Class : 1 Parameters : VAF + kW + kVA + kWh + kVAh + PF + PA + MM + NC + THD	For Ethernet port the aux. supply will be 65...300V AC/DC	6,470

KMAT	Model	Description	Auxiliary Supply	LP (INR)
MA4A	Rish Master 3440	Input : On site Programmable (Voltage - 57.7 - 346 VL-N) (Current - 1/5A) Single Phase Network Accuracy Class : 1 Parameters : VAF + kW + kVA + kVAh + kVAh + PF + PA + RH + OH + NI + MM + DM + MD + NC + THD	60- 300V AC/DC or 12-60 V AC/DC	7,920
		Input : On site Programmable (Voltage - 100 - 600 V L-L) (Current - 1/5A) 3Ph 3W/4W Network Accuracy Class : 1 Parameters : VAF + kW + kVA + kVAh + kVAh + PF + PA + RH + OH + NI + MM + DM + MD + NC + THD	Aux supply will be 100-550 VAC/DC for accuracy class 0.2s & for Ethernet port the it will be 65...300V AC/DC	8,620
LCD Meters				
WHOP	Rish EM 1320	Input : 100...500 V L-L 1 / 5A Single Phase 3Ph 3W/4W Network with LCD Display Accuracy Class : 1 Parameters : kWh + kVAh	60...300VAC/DC or 20...40VAC or 20...60VDC	2,600
WHOP	Rish EM 1330	Input : 100...500 V L-L 1 / 5A Single Phase 3Ph 3W/4W Network with LCD Display Accuracy Class : 1 Parameters : VAF + kW + kVA + kWh + kVAh+ PF + PA + RH + OH + NI + MM + NC		3,000
WHOP	Rish EM 1340	Input : 100...500 V L-L 1 / 5A Single Phase 3Ph 3W/4W Network with LCD Display Accuracy Class : 1 Parameters : VAF + kW + kVA + kWh + kVAh + kVAh + PF + PA + RH + OH + NI + MM + DM + MD + NC + THD		4,610
WHOP	Rish EM 2340DS	Input : 100...500 V L-L 1 / 5A Dual Source Energy Meter with LCD Display Single Phase 3Ph 3W/4W Network Accuracy Class : 1 Parameters : VAF + kW + kVA + kWh + kVAh + kVAh + PF + PA + RH + OH + NI + MM + DM + MD + NC + THD		3,520
MA4L	Rish LM 1350	Input : On site Programmable (Voltage - 100 - 600 V L-L) (Current - 1/5A) Big LCD Display 3Ph 3W/4W Network Accuracy Class : 0.5S Parameters : VAF + kW + kVA + kWh + kVAh + kVAh + PF + PA + RH + OH + NI + MM + NC + THD + RPM	100-550V AC/DC or 12-60V AC/DC	7,650
		Input : On site Programmable (Voltage - 100 - 600 V L-L) (Current - 100mA over RJ12) Big LCD Display 3Ph 3W/4W Network Accuracy Class : 1 Parameters : VAF + kW + kVA + kWh + kVAh + kVAh + PF + PA + RH + OH + NI + MM + NC + THD + RPM		6,630
MA4L	Rish LM 1360	Input : On site Programmable (Voltage - 100 - 600 V L-L) (Current - 1/5A) Big LCD Display 3Ph 3W/4W Network Accuracy Class : 0.5S Parameters : VAF + kW + kVA + kWh + kVAh + kVAh + PF + PA + RH + OH + NI + MM + DM + MD + NC + THD + RPM + IH		8,670
		Input : On site Programmable (Voltage - 100 - 600 V L-L) (Current - 100mA over RJ12) Big LCD Display 3Ph 3W/4W Network Accuracy Class : 1 Parameters : VAF + kW + kVA + kWh + kVAh + kVAh + PF + PA + RH + OH + NI + MM + DM + MD + NC + THD + RPM + IH		7,650
MLM1	MulltiLoad Monitor Rish ML 1400 (Class 1)	Input : On site Programmable (Voltage - 100 - 600 V L-L) (Current - 100mA over RJ12) Big LCD Display 3Ph 3W/4W Network	100-550V AC/DC	16,500
	MulltiLoad Monitor Rish ML 1410 (Class 0.5s)	Parameters : VAF + kW + kVA + kWh + kVAh + kVAh + PF + PA + RH + OH + NI + MM + DM + MD + NC + THD + RPM + IH + RCM + TAR + 3HL		17,880
	Optional Modules	RS485 (Modbus RTU) - 2 Relay - USB		1,400
		RS485 (Modbus RTU) - 4 Relay (USB not possible)		1,500
		Ethernet (Modbus TCP/IP) (USB & Relay not possible)		2,430
		*Data-logging		700
		QuickFix Module - RJ00 - 3 single phase CTs with 100mA to 100mA (via RJ12)		500
		QuickFix Module - RJ01 - 3 CTs with 1A to 100mA (via RJ12)		990
QuickFix Module - RJ05 - 3 CTs with 5A to 100mA (via RJ12)		1,050		
QuickFix Module - RC30 - 3x CBCT to RJ12		600		



KMAT	Model	Description	Auxiliary Supply	LP (INR)
Touch Screen Meters				
MA3I	Rish Master 3430 i	Input : On site Programmable (Voltage - 57.7 - 346 VL-N) (Current - 1/5A) Single Phase Network Accuracy Class : 1 Parameters : VAF + kW + kVAr + kVA + kWh + kVArh + kVAh + PF + PA + MM + NC + THD	60- 300V AC/DC or 12-60 V AC/DC	7,860
		Input : On site Programmable (Voltage - 100 - 600 V L-L) (Current - 1/5A) 3Ph 3W/4W Network Accuracy Class : 1 Parameters : VAF + kW + kVAr + kVA + kWh + kVArh + kVAh + PF + PA + MM + NC + THD		8,390
MA4I	Rish Master 3440 i	Input : On site Programmable (Voltage - 57.7 - 346 VL-N) (Current - 1/5A) Single Phase Network Accuracy Class : 1 Parameters : VAF + kW + kVAr + kVA + kWh + kVArh + kVAh + PF + PA + RH + OH + NI + MM + DM + MD + NC + THD	Aux supply will be 100-550 VAC/DC for accuracy class 0.2s & for Ethernet port the it will be 65...300V AC/DC	10,010
		Input : On site Programmable (Voltage - 100 - 600 V L-L) (Current - 1/5A) 3Ph 3W/4W Network Accuracy Class : 1 Parameters : VAF + kW + kVAr + kVA + kWh + kVArh + kVAh + PF + PA + RH + OH + NI + MM + DM + MD + NC + THD		10,540
MA4S	Rish Master 3440 iDL	Input : On site Programmable (Voltage - 100 - 600 V L-L) (Current - 1/5A) 3Ph 3W/4W Network With Data logging Accuracy Class : 0.2s Parameters : VAF + kW + kVAr + kVA + kWh + kVArh + kVAh + PF + PA + RH + OH + NI + MM + DM + MD + NC + THD + IH + RTC Output - RS485 - 2 Pulse Output	100-550V AC/DC or 12-60V AC/DC	16,240
		Input : On site Programmable (Voltage - 100 - 600 V L-L) (Current - 1/5A) 3Ph 3W/4W Network With Data logging Accuracy Class : 0.2s Parameters : VAF + kW + kVAr + kVA + kWh + kVArh + kVAh + PF + PA + RH + OH + NI + MM + DM + MD + NC + THD + IH + RTC Output - RS485 - 1 Pulse Output - 2 Analog Output		18,000
		Input : On site Programmable (Voltage - 100 - 600 V L-L) (Current - 1/5A) 3Ph 3W/4W Network With Data logging Accuracy Class : 0.2s Parameters : VAF + kW + kVAr + kVA + kWh + kVArh + kVAh + PF + PA + RH + OH + NI + MM + DM + MD + NC + THD + IH + RTC Output - Ethernet (MODBUS TCP/IP)		20,770
Power Quality Monitor				
PA00	Rish PQM	Input : On site Programmable (Voltage - 100 up to 500 V L-L) (Current- 1/5A) 3Ph 3W/4W Network Accuracy Class : 0.5s Parameters : VAF + kW + kVAr + kVA + kWh + kVArh + kVAh + PF + PA + RH + OH + NI + MM + DM + MD + NC + THD + IH + RTC + SG + SW + OC	60-300V AC/DC	14,820
Advanced Dual Source Energy Meter				
WH10	Rish 3490DS i	Input : On site Programmable (Voltage - 100 up to 500 V L-L) (Current- 1/5A) 3Ph 3W/4W Network or 1 Phase Accuracy Class : 0.5s Parameters : VAF + kW + kVAr + kVA + kWh + kVArh + kVAh + PF + PA + RH + OH + NI + MM + DM + MD + NC + THD + IH + RTC + GE	60-300V AC/DC	15,630
Smart Demand Controller				
DM82	Rish DMC i	Input : On site Programmable (Voltage - 100 up to 500 V L-L) (Current - 1/5A) 3Ph 3W/4W Network or 1 Phase Accuracy Class : 0.5s with 4 Relay output Parameters : VAF + kW + kVAr + kVA + kWh + kVArh + kVAh + PF + PA + RH + OH + NI + MM + DM + MD + NC + THD + IH + RTC	60-300V AC/DC	23,970

KMAT	Model	Description	Auxiliary Supply	LP (INR)
Power Quality Analyzer				
PA10	Rish PQA	Input : On site Programmable (Voltage - 100 up to 500 V L-L) (Current - 1/5A) 3Ph 3W/4W Network Accuracy Class : 0.2s 8GB External memory card, 2 Relay, RS 485 Parameters : Refer to the datasheet	85-265V AC/DC	86,500
Optional Accessories for Multi-function Meters*				
1	Accuracy class 0.5	RM 3430, RM 3440, RM 3430i, RM 3440i, EM 3490, EM 3490SS, EM 3490DS		1,380
2	Accuracy class 0.2	RM 3430, RM 3440, RM 3430i, RM 3440i		2,290
3	Accuracy class 0.2s	RM 3440, RM 3440i, LM 1350/1360 (Aux supply will be 100-550 VAC/DC)		2,500
4	RS485 (Modbus)	EM 1330, EM 1340, EM 3490SS, EM 3490DS, EM 1320, EM 2340DS, Delta Energy, PQM, DMCI, EM 3490DSi RISH EMDC		1,100
5	RS485 + 2 Relay / Pulse	RM 3430, RM 3440, RM 3430i, RM 3440i, LM 1350/1360, PQM, EM 3490DSi, EMDC		1,100
6	RS485 + 1 Relay / Pulse + 2 Analog	RM 3430, RM 3440, RM 3430i, RM 3440i		2,860
7	1 Relay o/p (Pulse /Limit)	EM 1330, EM 1340, EM 3490, EM 3490SS, EM 3490DS, EM1320, EM 2340DS, Delta Energy, Optima VAF, Delta Power		1,010
8	2 Pulse /Relay	EM 1330, EM 1340, EM 1320, EM 2340DS		1,380
9	Ethernet Interface (MODBUS TCP/IP Protocol)	RM 3430, RM3430i, RM 3440, RM 3440i, PQM, LM 1350/60		3,530
10	Terminal Sealing	EM 3490, 3490SS		100
11	DIP Switch	Instead of Fixed CT Ratio for EM 3490		460
12	Thumb Wheel	Instead of Fixed CT Ratio for EM 3490		1,100
13	Converter 1	RS 485 to RS 232 Converter (Self Powered)		2,290
14	Converter 2	RS 485 to USB Converter (Self Powered)		5,500
15	4 Relay	Rish EM DC		2,290
16	Data logging + Ethernet + RTC	LM 1350/1360		4,200
17	Data logging + USB + RTC + RS 485 + 2 Relay	LM 1350/1360		3,200
18	IP 65 Kit	IP 65 protection kit with sealable window (96 size)		130
19	Side mounting clamp	Optima VAF / Delta Series / LM 13xx Series / EM 13xx / EM 2340		20
20	SPAR-SD00-0707	GSM MODULE LM 13xx 0.5s		17,345 (Including The software)
21	SPAR-SD00-0709	GSM MODULE EM 13xx		
22	SPAR-SD00-0710	GSM MODULE EM 2340		
23	SPAR-SD00-0708	GSM MODULE LM13xx 0.2s		
24	SPAR-SD00-0717	SIM CARD (2 YEARS DATA)		
25	SPAR-SD00-0718	SIM CARD (5 YEARS DATA)		
26	Additional nodes	Additional Report / Notification / Alarm facility – required. For additional node get in touch with RIPL/ESL sales team.		2,500

*Before selecting any single or multiple optional accessories / outputs please refer to the respective datasheets to check feasibility

Multi-Function Meters

KMAT	Model	Description	Auxiliary Supply	LP (INR)
DC Energy Meter				
EM94	RISH EM DC 6000	Basic Model 6000 1 Channel Input Voltage : 10-60 / 61-200 / 201-1000V DC Shunt Input : 50-150mV Accuracy Class : 0.5 Parameters : VA + kW + kWh + RH + OH + NI + DM	60 - 300 V AC / DC or 12 - 60 VDC	3,800
Note : The Rish EMDC 6000 will be available from April'21				
Optional Accessories for EMDC				
1	RS 485 Modbus RTU + 2Relay output			1,500
2	RS 485 Modbus RTU + 2Relay output + USB + Data-logging			3,200

New



Rish EMDC 6000 - 1 Channel



Multi Function Meter with GSM Module

New



MultiLoad Monitor

New



QuickFix Module

List of abbreviation

- | | | |
|-----------------------------------|---------------------------------|------------------------------------|
| VAF - Voltage Current & Frequency | PA - Phase Angle | THD - % Total Harmonics distortion |
| kW - Active Power | RH - Run Hour | IH - Individual Harmonics |
| kVAR - Reactive Power | OH - On Hour | RTC - Real time clock |
| kVA - Apparent Power | NI - No. of interruptions | SG - Sag |
| kWh - Active Energy | MM - Min / Max Parameters | SW - Swell |
| kVAh - Reactive energy | DM - Demand | OC - Over Current |
| kVAh - Apparent Energy | MD - Max Demand | GE - Generator Event |
| PF - Power Factor | NC - Neutral Current | RCM - Residual Current Monitoring |
| TAR - Tariff | 3HL - 3 Phase Health Monitoring | |

Rishabh Instruments Pvt. Ltd.

\$ For productwise approbations, please contact local sales office

KMAT	Model	Description	Auxiliary Supply	LP (INR)
Electrical Transducer				
Programmable Rish CON Series				
CM41	Rish CON I	Type : Current (TRMS) Input : 1...5A Output : 0...20mA / 4...20mA OR 0...10V Accuracy Class : 0.2	60...300VAC/DC or 24...60VAC/DC	3,360
CM41	Rish CON V	Type : Voltage (TRMS) Input : 57...500V Output : 0...20mA / 4...20mA OR 0...10V Accuracy Class : 0.2		3,360
CF41	Rish CON Hz	Type : Frequency (TRMS) Input : 45...55 / 48...52 / 55...65 / 45...65 Hz (57...500V) Output : 0...20mA / 4...20mA OR 0...10V Accuracy Class : 0.2		3,740
CP41	Rish CON P	Type : Power / Power Factor (TRMS) Input : 100...500V LL 1...5A Output : 0...20mA / 4...20mA OR 0...10V / -20mA...0...+20mA / -10V...0...+10V Accuracy Class : 0.2, Class 0.5 for PF and Phase angle		7,340
PR43	Rish CON M	Type : Multi-transducer (TRMS) Input : 100 or 400V L-L 1 or 5A (To be selected while ordering only) Output : 0 / 2 / 4 Analog -20...0...20mA & 0 / 2 / 4 Relay (M-04 M-22 M-40) Communication Port : MODBUS RS 485 & USB Accuracy Class : 0.5	85...253 VAC / 90...320 VDC or 20...40 VAC / 20...60 VDC	12,820
Programmable Rish Ducer MXX Series				
PM11	Rish Ducer M20	Type : Multi-transducer Input : 100 to 693V L-L 1 to 6A (Configurable) Output : 2 Analog Outputs 0...20mA OR 0...10V Communication Port : RS 232 Accuracy Class : 0.2 for Voltage & Current Class : 0.15 for Frequency Class : 0.25 for Power & Power Factor	24...60 or 85...230VAC/DC	14,140
	Rish Ducer M30	Type : Multi-transducer Input : 100 to 693V L-L 1 to 6A (Configurable) Output : 3 Analog Outputs 0...20mA OR 0...10V Communication Port : RS232 Accuracy Class : 0.2 for Voltage & Current Class : 0.15 for Frequency Class : 0.25 for Power & Power Factor		17,730
	Rish Ducer M24	Type : Multi-transducer Input : 100 to 693V L-L 1 to 6A (Configurable) Output : 2 Analog Outputs 0...20mA OR 0...10V 4 Digital Outputs Communication Port : RS 232 Accuracy Class : 0.2 for Voltage & Current Class : 0.15 for Frequency Class : 0.25 for Power & Power Factor		17,410
	Rish Ducer M42	Type : Multi-transducer Input : 100 to 693V L-L 1 to 6A (Configurable) Output : 4 Analog Outputs 0...20mA OR 0...10V 2 Digital Outputs Communication Port : RS 232 Accuracy Class : 0.2 for Voltage & Current Class : 0.15 for Frequency Class : 0.25 for Power & Power Factor		19,000
	Rish Ducer M40	Type : Multi-transducer Input : 100 to 693V L-L 1 to 6A (Configurable) Output : 4 Analog Outputs 0...20mA OR 0...10V Communication Port : RS 232 & MODBUS RS 485 Accuracy Class : 0.2 for Voltage & Current Class : 0.15 for Frequency Class : 0.25 for Power & Power Factor		21,280
PM11	Rish Ducer M01	Type : Multi-transducer Input : 100 to 693V L-L 1 to 6A (Configurable) Communication Port : RS 232 & MODBUS RS 485 Accuracy Class : 0.2 for Voltage & Current Class : 0.15 for Frequency Class : 0.25 for Power & Power Factor	24...60 or 85...230VAC/DC	15,200
	Rish Ducer M00	Type : Multi-transducer Input : 100 to 693V L-L 1 to 6A (Configurable) Communication Port : RS 232 & LONBUS (LonWorks) Accuracy Class : 0.2 for Voltage & Current Class : 0.15 for Frequency Class : 0.25 for Power & Power Factor		18,960

KMAT	Model	Description	Auxiliary Supply	LP (INR)
Non - Programmable Rish CON Series				
CM22	Rish CON CA	Type : Current AVG (Single input Single output) Input : 0...1 / 0...5A Output : 0..10mA / 0...20mA / 2..10mA / 4...20mA / 0...5V / 0...10V Accuracy Class : 0.2	40...300VAC/DC or 24...60VAC/DC	2,350
CM21		Type : Current TRMS (Single input Single output) Input : 0...1 / 0...5A Output : 0..10mA / 0...20mA / 2..10mA / 4...20mA / 0...5V / 0...10V Accuracy Class : 0.2		3,140
CM22	Rish CON CV	Type : Voltage AVG (Single input Single output) Input : 0...63.5V to 0...500V Output : 0..10mA / 0...20mA / 2..10mA / 4...20mA / 0...5V / 0...10V Accuracy Class : 0.2		2,350
CM21		Type : Voltage TRMS (Single input Single output) Input : 0...63.5V to 0...500V Output : 0..10mA / 0...20mA / 2..10mA / 4...20mA / 0...5V / 0...10V Accuracy Class : 0.2		3,140
CM23	Rish CON CA	Type : Current - AVG (Single input Dual output) Input Range : 0...1 / 0...5A Output : 0..10mA / 0...20mA / 2..10mA / 4...20mA / 0...5V / 0...10V Accuracy Class : 0.2	60...300 VAC/DC or 20...40VAC / 20...60VDC	3,410
	Rish CON CV	Type : Voltage - AVG (Single input Dual output) Input Range : 0-63.5 / 0-100 / 0-110 / 0-150 / 0-220 / 0-230 / 0-240 / 0-250 / 0-300 / 0-330 / 0-415 / 0-450 / 0-500V AC Output : 0..10mA / 0...20mA / 2..10mA / 4...20mA / 0...5V / 0...10V Accuracy Class : 0.2		3,410
Optional Accessories for Electrical Transducers				
400Hz	Rish CON P			530
RS 485	Rish CON V Rish CON I Rish CON Hz Rish CON P			1,100
Display Module	Rish CON V Rish CON I Rish CON Hz Rish CON P			740
Dual Output	Rish CON V Rish CON I Rish CON Hz Rish CON P			665
Non Standard Input / Output	Rish CON CA / CV			920
PRKAB 601	Programming RS232 / USB & Configuration Adapter + Cable for Rish CON V Rish CON I Rish CON Hz Rish CON P			1,200



KMAT	Model	Description	Auxiliary Supply	LP (INR)
CT with Inbuilt Transducer				
CCT1	RISH CTDucer 70 x 30mm	Type : Current TRMS (Single input Single output) Input : 0 - 50A Output : 0...20mA / 4...20mA Accuracy Class : 0.5%	24V DC ± 15% 230VAC - Available from April'21	3,290
		Type : Current AVG (Single input Single output) Input : 0 - 50A Output : 0...20mA / 4...20mA Accuracy Class : 0.5%		1,990
		Type : Current TRMS (Single input Single output) Input : 0 - 100A Output : 0...20mA / 4...20mA Accuracy Class : 0.5%		3,340
		Type : Current AVG (Single input Single output) Input : 0 - 100A Output : 0...20mA / 4...20mA Accuracy Class : 0.5%		2,040
		Type : Current TRMS (Single input Single output) Input : 0 - 150A Output : 0...20mA / 4...20mA Accuracy Class : 0.5%		3,390
		Type : Current AVG (Single input Single output) Input : 0 - 150A Output : 0...20mA / 4...20mA Accuracy Class : 0.5%		2,090
		Type : Current TRMS (Single input Single output) Input : 0 - 200A Output : 0...20mA / 4...20mA Accuracy Class : 0.5%		3,440
		Type : Current AVG (Single input Single output) Input : 0 - 200A Output : 0...20mA / 4...20mA Accuracy Class : 0.5%		2,140
		Type : Current TRMS (Single input Single output) Input : 0 - 250A Output : 0...20mA / 4...20mA Accuracy Class : 0.5%		3,490
		Type : Current AVG (Single input Single output) Input : 0 - 250A Output : 0...20mA / 4...20mA Accuracy Class : 0.5%		2,190
		Type : Current TRMS (Single input Single output) Input : 0 - 300A Output : 0...20mA / 4...20mA Accuracy Class : 0.5%		3,540
		Type : Current AVG (Single input Single output) Input : 0 - 300A Output : 0...20mA / 4...20mA Accuracy Class : 0.5%		2,240



Current Transducer



Current Transformer (CT)



CT with inbuilt transducer

KMAT	Model	Description	Auxiliary Supply	LP (INR)
CCT1	RISH CTDucer 90 x 40 mm	Type : Current TRMS (Single input Single output) Input : 0 - 150A Output : 0...20mA / 4...20mA Accuracy Class : 0.5%	24V DC ± 15% 230VAC - Available from April'21	3,470
		Type : Current AVG (Single input Single output) Input : 0 - 150A Output : 0...20mA / 4...20mA Accuracy Class : 0.5%		2,180
		Type : Current TRMS (Single input Single output) Input : 0 - 200A Output : 0...20mA / 4...20mA Accuracy Class : 0.5%		3,520
		Type : Current AVG (Single input Single output) Input : 0 - 200A Output : 0...20mA / 4...20mA Accuracy Class : 0.5%		2,230
		Type : Current TRMS (Single input Single output) Input : 0 - 250A Output : 0...20mA / 4...20mA Accuracy Class : 0.5%		3,570
		Type : Current AVG (Single input Single output) Input : 0 - 250A Output : 0...20mA / 4...20mA Accuracy Class : 0.5%		2,280
		Type : Current TRMS (Single input Single output) Input : 0 - 300A Output : 0...20mA / 4...20mA Accuracy Class : 0.5%		3,620
		Type : Current AVG (Single input Single output) Input : 0 - 300A Output : 0...20mA / 4...20mA Accuracy Class : 0.5%		2,330
		Type : Current TRMS (Single input Single output) Input : 0 - 400A Output : 0...20mA / 4...20mA Accuracy Class : 0.5%		3,670
		Type : Current AVG (Single input Single output) Input : 0 - 400A Output : 0...20mA / 4...20mA Accuracy Class : 0.5%		2,380
		Type : Current TRMS (Single input Single output) Input : 0 - 500A Output : 0...20mA / 4...20mA Accuracy Class : 0.5%		3,720
		Type : Current AVG (Single input Single output) Input : 0 - 500A Output : 0...20mA / 4...20mA Accuracy Class : 0.5%		2,430
		Type : Current TRMS (Single input Single output) Input : 0 - 600A Output : 0...20mA / 4...20mA Accuracy Class : 0.5%		3,770
		Type : Current AVG (Single input Single output) Input : 0 - 600A Output : 0...20mA / 4...20mA Accuracy Class : 0.5%		2,480
		Type : Current TRMS (Single input Single output) Input : 0 - 750A Output : 0...20mA / 4...20mA Accuracy Class : 0.5%		3,850
		Type : Current AVG (Single input Single output) Input : 0 - 750A Output : 0...20mA / 4...20mA Accuracy Class : 0.5%		2,550
Optional Accessory				
Accessory	Din Rail Mounting Kit			70

KMAT	Model	Description	Auxiliary Supply	LP (INR)
Process Transducer				
PI01	Rish PI 101	Type :Programmable Single output DC Isolator Input Range : 0...12 / 0...10 / 0...5 / 1...5 VDC 0...20 / 0...10 / 4...20 / 0...24 mA DC Output : 0..10mA / 0...20mA / 2..10mA / 4...20mA / 0...5 / 1...5 / 0...10 / 2...10V Accuracy Class : 0.2	60...300 VAC/DC or 20...40VAC / 20...60VDC	1,990
PI02	Rish PI 102	Type :Programmable Dual output DC Isolator Input Range : 0...12 / 0...10 / 0...5 / 1...5 VDC 0...20 / 0...10 / 4...20 / 0...24 mA DC Output : 0..10mA / 0...20mA / 2..10mA / 4...20mA / 0...5 / 1...5 / 0...10 / 2...10V Accuracy Class : 0.2	60...300 VAC/DC or 20...40VAC / 20...60VDC	2,990
SI01	Rish CON SI-101	Type : Powerful DC Signal Isolator Input : DC Current : 0...20mA / 4...20mA / 1...5mA DC Voltage : 0...10V / 2...10V / 1...5V Output : DC Current : 0...20mA / 4...20mA DC Voltage : 0...10V / 2...10V Accuracy Class : 0.2	24...60V AC/DC or 60 ...300V AC/DC	1,990
SI02	Rish CON SI-102	Type : Powerful DC Signal Isolator Input : DC Current : 0...20mA / 4...20mA / 1...5mA DC Voltage : 0...10V / 2...10V / 1...5V Output : DC Current : 0...20mA / 4...20mA DC Voltage : 0...10V / 2...10V Accuracy Class : 0.2		2,990
	TV808	Type : DC Isolator 1 Input-1 Output (S17 or E8 Housing) Input : 0.1mA...20mA & 4...20mA & 0.06V...40V Output : DC Current 0...20mA 4...20mA DC Voltage : 0...5V 0...10V Accuracy Class : 0.2 for S17Housing, Class 0.5 for E8 Housing	24...60V AC/DC or 85 ...230V AC/DC	2,490
TV08	TV808	Type : DC Isolator 1 Input-2 Output (S17 or E8 Housing) Input : 0.1mA...20mA & 4...20mA & 0.06V...40V Output : DC Current 0...20mA 4...20mA DC Voltage : 0...5V 0...10V Accuracy Class : 0.2 for S17Housing, Class 0.5 for E8 Housing		3,490
	TV808	Type : DC Isolator 2 Input-2 Output (S17 Housing) Input : 0.1mA...20mA & 4...20mA & 0.06V...40V Output : DC Current 0...20mA 4...20mA DC Voltage : 0...5V 0...10V Accuracy Class : 0.2 for S17Housing, Class 0.5 for E8 Housing		3,990
Tap Position Transducer				
	Rish CON TPT	Type : Tap Position Input : 0-17kOhm 0-18kOhm 0-20kOhm 0-25kOhm Output : DC Current : 0...20mA / 4...20mA DC Voltage : 0...10V / 2...10V Accuracy Class : 0.2	24...60V AC/DC or 60 ...300V AC/DC	4,545
CT25	Rish CON TPT	Type : Tap Position with display Input : 0-17kOhm 0-18kOhm 0-20kOhm 0-25kOhm Output : DC Current : 0...20mA / 4...20mA DC Voltage : 0...10V / 2...10V Accuracy Class : 0.2		5,440
	Rish CON TPT (96x96)	Type : Tap Position with display (96 X 96) Input : 0-17kOhm 0-18kOhm 0-20kOhm 0-25kOhm Output : DC Current : 0...20mA 4...20mA DC Voltage : 0...10V 2...10V Accuracy Class : 0.2		5,000
Universal Transmitter				
V604	Rish Ducer V604	Type : Programmable Transmitter Input : DC Voltage/Current / Resistance / Temp. etc. Output : DC Current : 0...20mA / 4...20mA DC Voltage : 0...5V / 1...5V / 0...10V / 2...10V Accuracy Class : 0.2	24...60V AC/DC or 85 ...230V AC/DC	7660
Temperature Transmitter				
PT02	PT 602	Type : 1 Channel Temperature transmitter Input : Temperature Output : DC Current : 0...20mA 4...20mA DC Voltage : 0...10V Accuracy Class : 0.5	24...60V AC/DC or 85 ...230V AC/DC	5,600
		Type : 2 Channel Temperature transmitter Input : Temperature Output : DC Current : 0...20mA 4...20mA DC Voltage : 0...10V Accuracy Class : 0.5		7,015
Optional Accessories for Process Transducers				
RS 485		Rish CON TPT 96 X 96		1,100
Non Standard Input / Output		Rish Ducer TV808 and Rish CON SI 101 / SI 102		740
PRKAB 600		Programming RS232 & Configuration Adapter + Cable for Rish Ducer V604		1,200
PRKAB 601		Programming RS232 & Configuration Adapter + Cable for Rish CON TPT		1,200

Group	Model	Size	Description	Auxiliary Supply	LP (INR)
PID Controllers - Basic					
TC41	RE56	48 x 48 x 87.35 mm	Input: RTD Sensors: PT100 Thermocouple Sensors: J T K S R Output: 1x SSR driving or 1x Relay Output; Accuracy Class as per Datasheet;	60 ... 280 V AC/DC	1,350
TC40	RE57	48 x 48 x 87.35 mm	Input: RTD Sensors: PT100 PT1000, Thermocouple Sensors: J T K S R B N E, Standard Signals: 0/4 ... 20mA or 0 ... 5 / 10V; Output: 1x SSR driving Output or / Additional as with Extra Charges*	60 ... 280 V AC/DC OR 20 ... 60V DC / 20 V – 40V AC	2,320
	RE96	96 x 96 x 72.15 mm			2,550
	RE77	48 x 96 x 72.15 mm			2,420
*Extra Charges for TC40 – Output combination to be specified while ordering and maximum 2 outputs are possible.			1x Relay Output	-	140
			2x SSR Outputs		170
			2x Relay Output		300



Genset Controllers			
Group	Model	Order Code	LP (INR)
GC10	AMF 1000	GC10-A000000000000 - AMF1000 AUTOMATIC MAINS FAILURE	20,860
	RI809	GC10-AT000000000000 - GENSET RI809ATS	19,850
	RS 300	GC10-G000000000000 - RS 300 GENSET CONTROLLER	19,360



Basic Protection Relay

Product Code	Description	System	Contact	Relay	List Price (INR)
Phase Failure Relay - Rish Relay PHR					
PR10-P411110000000	PhR 3P3W 110VLL 50Hz NE 1 Relay	3Ø3W	Normally Energized	1 Relay	890
PR10-P411210000000	PhR 3P3W 110VLL 50Hz ND 1 Relay	3Ø3W	Normally D-Energized	1 Relay	890
PR10-P412110000000	PhR 3P3W 110VLL 60Hz NE 1 Relay	3Ø3W	Normally Energized	1 Relay	890
PR10-P412210000000	PhR 3P3W 110VLL 60Hz ND 1 Relay	3Ø3W	Normally D-Energized	1 Relay	890
PR10-P421110000000	PhR 3P3W 240VLL 50Hz NE 1 Relay	3Ø3W	Normally Energized	1 Relay	890
PR10-P421210000000	PhR 3P3W 240VLL 50Hz ND 1 Relay	3Ø3W	Normally D-Energized	1 Relay	890
PR10-P422110000000	PhR 3P3W 240VLL 60Hz NE 1 Relay	3Ø3W	Normally Energized	1 Relay	890
PR10-P422210000000	PhR 3P3W 240VLL 60Hz ND 1 Relay	3Ø3W	Normally D-Energized	1 Relay	890
PR10-P431110000000	PhR 3P3W 415VLL 50Hz NE 1 Relay	3Ø3W	Normally Energized	1 Relay	890
PR10-P431210000000	PhR 3P3W 415VLL 50Hz ND 1 Relay	3Ø3W	Normally D-Energized	1 Relay	890
PR10-P432110000000	PhR 3P3W 415VLL 60Hz NE 1 Relay	3Ø3W	Normally Energized	1 Relay	890
PR10-P432210000000	PhR 3P3W 415VLL 60Hz ND 1 Relay	3Ø3W	Normally D-Energized	1 Relay	890
PR10-P441110000000	PhR 3P3W 440VLL 50Hz NE 1 Relay	3Ø3W	Normally Energized	1 Relay	890
PR10-P441210000000	PhR 3P3W 440VLL 50Hz ND 1 Relay	3Ø3W	Normally D-Energized	1 Relay	890
PR10-P442110000000	PhR 3P3W 440VLL 60Hz NE 1 Relay	3Ø3W	Normally Energized	1 Relay	890
PR10-P442210000000	PhR 3P3W 440VLL 60Hz ND 1 Relay	3Ø3W	Normally D-Energized	1 Relay	890
PR10-P511110000000	PhR 3P4W 110VLL 50Hz NE 1 Relay	3Ø4W	Normally Energized	1 Relay	890
PR10-P511210000000	PhR 3P4W 110VLL 50Hz ND 1 Relay	3Ø4W	Normally D-Energized	1 Relay	890
PR10-P512110000000	PhR 3P4W 110VLL 60Hz NE 1 Relay	3Ø4W	Normally Energized	1 Relay	890
PR10-P512210000000	PhR 3P4W 110VLL 60Hz ND 1 Relay	3Ø4W	Normally D-Energized	1 Relay	890
PR10-P521110000000	PhR 3P4W 240VLL 50Hz NE 1 Relay	3Ø4W	Normally Energized	1 Relay	890
PR10-P521210000000	PhR 3P4W 240VLL 50Hz ND 1 Relay	3Ø4W	Normally D-Energized	1 Relay	890
PR10-P522110000000	PhR 3P4W 240VLL 60Hz NE 1 Relay	3Ø4W	Normally Energized	1 Relay	890
PR10-P522210000000	PhR 3P4W 240VLL 60Hz ND 1 Relay	3Ø4W	Normally D-Energized	1 Relay	890
PR10-P531110000000	PhR 3P4W 415VLL 50Hz NE 1 Relay	3Ø4W	Normally Energized	1 Relay	890
PR10-P531210000000	PhR 3P4W 415VLL 50Hz ND 1 Relay	3Ø4W	Normally D-Energized	1 Relay	890
PR10-P532110000000	PhR 3P4W 415VLL 60Hz NE 1 Relay	3Ø4W	Normally Energized	1 Relay	890
PR10-P532210000000	PhR 3P4W 415VLL 60Hz ND 1 Relay	3Ø4W	Normally D-Energized	1 Relay	890
PR10-P541110000000	PhR 3P4W 440VLL 50Hz NE 1 Relay	3Ø4W	Normally Energized	1 Relay	890
PR10-P541210000000	PhR 3P4W 440VLL 50Hz ND 1 Relay	3Ø4W	Normally D-Energized	1 Relay	890
PR10-P542110000000	PhR 3P4W 440VLL 60Hz NE 1 Relay	3Ø4W	Normally Energized	1 Relay	890
PR10-P542210000000	PhR 3P4W 440VLL 60Hz ND 1 Relay	3Ø4W	Normally D-Energized	1 Relay	890
Current Relay - Rish Relay AR					
PR10-A100110000000	AR 1P NE 1 Relay	1Ø	Normally Energized		1,590
PR10-A100120000000	AR 1P NE 2 Relay	1Ø	Normally Energized	2 Relay	1,740
PR10-A100210000000	AR 1P ND 1 Relay	1Ø	Normally D-Energized	1 Relay	1,590
PR10-A100220000000	AR 1P ND 2 Relay	1Ø	Normally D-Energized	2 Relay	1,740
PR10-A300110000000	AR 3P NE 1 Relay	3Ø	Normally Energized	1 Relay	1,740
PR10-A300120000000	AR 3P NE 2 Relay	3Ø	Normally Energized	2 Relay	1,890
PR10-A300210000000	AR 3P ND 1 Relay	3Ø	Normally D-Energized	1 Relay	1,740
PR10-A300220000000	AR 3P ND 2 Relay	3Ø	Normally D-Energized	2 Relay	1,890
Voltage Relay - Rish Relay VR					
PR10-V150110000000	VR 1P 58-138VLL NE 1 Relay	1Ø	Normally Energized	1 Relay	1,145
PR10-V150120000000	VR 1P 58-138VLL NE 2 Relay	1Ø	Normally Energized	2 Relay	1,295
PR10-V180110000000	VR 1P 220-254VLL NE 1 RELAY	1Ø	Normally Energized	1 Relay	1,145
PR10-V180120000000	VR 1P 220-254VLL NE 2 RELAY	1Ø	Normally Energized	2 Relay	1,295
PR10-V310110000000	VR 3P 110-240VLL NE 1 RELAY	3Ø	Normally Energized	1 Relay	1,295
PR10-V310120000000	VR 3P 110-240VLL NE 2 RELAY	3Ø	Normally Energized	2 Relay	1,445
PR10-V360110000000	VR 3P 415-480VLL NE 1 Relay	3Ø	Normally Energized	1 Relay	1,295
PR10-V360120000000	VR 3P 415-480VLL NE 2 Relay	3Ø	Normally Energized	2 Relay	1,445
PR10-V370110000000	VR 3P 381-415VLL NE 1 RELAY	3Ø	Normally Energized	1 Relay	1,295
PR10-V370120000000	VR 3P 381-415VLL NE 2 RELAY	3Ø	Normally Energized	2 Relay	1,445

New



Advance Digital Monitoring Relay

KMAT	Model	Description	Auxiliary Supply	LP (INR)
TR10	Rish Relay - I	Prog. 1PH Current 1-5A 1CO+1CO	60-300V AC/DC or 20-60V DC / 20-40V AC	2,750
	Rish Relay - I	Prog. 1PH Current 1-5A 2CO		2,750
	Rish Relay - I	Prog. 1PH Current 1-5A 1CO		2,700
	Rish Relay - I	Prog. 3PH Current 1-5A 1CO+1CO		2,790
	Rish Relay - I	Prog. 3PH Current 1-5A 2CO		2,790
	Rish Relay - I	Prog. 3PH Current 1-5A 1CO		2,740
	Rish Relay V/Hz	Prog. 1PH & 3PH V 100-600V L-L 1CO+1CO		2,510
	Rish Relay V/Hz	Prog. 1PH & 3PH V 100-600V L-L 2CO		2,510
	Rish Relay V/Hz	Prog. 1PH & 3PH V 100-600V L-L 1CO		2,460
	Rish Relay V	Prog. 1PH & 3PH VOLT 100-600V L-L 1CO+1CO		2,050
	Rish Relay V	Prog. 1PH & 3PH VOLT 100-600V L-L 2CO		2,050
	Rish Relay V	Prog. 1PH & 3PH VOLT 100-600V L-L 1CO		2,000
	ELR1	Rish ELR (Din)		ELR SINGLE CBCT 1CO+1CO
Rish ELR (Din)		ELR SINGLE CBCT 2CO		2,450
Rish ELR (Din)		ELR SINGLE CBCT 1CO		2,400
Rish ELR+(Din)		ELR+ Dual CBCT 1CO+1CO		3,340
Rish ELR VI(NE) (Din)		ELR VI(NE) CBCT+E to N V+I 1CO+1CO		3,610
Rish ELR VI (Din)		ELR VI CBCT+V+I 1CO+1CO		3,650
Rish ELR (96x96mm)		ELR SINGLE CBCT 1CO		2,400
Rish ELR (96x96mm)		ELR SINGLE CBCT 1CO+1CO		2,450
Rish ELR (96x96mm)		ELR SINGLE CBCT 2CO		2,450
Rish ELR+ (96x96mm)		ELR+ DUAL CBCT 1CO+1CO		3,340
Rish ELR VI (96x96mm)		ELR VI CBCT+V+I 1CO+1CO		3,610
Rish ELR VI (NE) (96x96mm)	ELR VI(NE) CBCT+E to N V+I 1CO+1CO	3,650		
CB01	Rish CBCT	TW-E CBCT 73/30 (50) 30mA-30A 600:1		870
CB02	Rish CBCT	TW-E CBCT 95/50 (40) 30mA-30A 600:1		1,215
CB03	Rish CBCT	TW-E CBCT 135/85 (30) 30mA-30A 600:1		1,380
CB04	Rish CBCT	TW-E CBCT 165/130 (30) 30mA-30A 600:1	1,490	
CB05	Rish CBCT	TW-E CBCT 260/200 (20) 30mA-30A 600:1	2,160	
Optional Accessory				
Extra charges for PRKAB 600 programming cable				1,200



Static Relay

KMAT	Model	Description	Auxiliary Supply	LP (INR)
AC Current Relay Input - 2 / 3 / 4 / 6 / 8 / 10A or 1A / 5A CT Operated				
LA21	252 - PAU	Single Phase Under Current	AC : 120 / 230 / 240 / 400 / 415V	990
	252 - PAO	Single Phase Over Current		990
LA31	253 - PAD	Single Phase Combined Under/Over Current		1,950
	253 - PAV	Three Phase Under Current		2,360
	253 - PAP	Three Phase Over Current		2,360
Optional Accessories				
Extra charges for DC Aux : 12 / 24 / 48 / 110V				100
Extra charges for any non-standard settings other than Datasheet				100
AC Voltage Relay With Adjustable Differential Input - 100 / 110 / 220 / 230 / 240 / 380 / 400 / 415 / 440V				
LK21	252 - PVU	Single Phase Under Voltage	Self Powered	1,300
	252 - PVO	Single Phase Over Voltage		1,300
LK31	253 - PVB	Single Phase Combined Under/Over Voltage.		1,950
LK21	252 - PVV	3 Phase 4 Wire Under Voltage		1,300
	252 - PVP	3 Phase 4 Wire Over Voltage		1,300
LK31	253 - PVE	3 Phase 4 Wire Combined Under/Over Voltage		1,950
LK21	252 - PVK	3 Phase 3 Wire Under Voltage		1,300
	252 - PVA	3 Phase 3 Wire Over Voltage		1,300
LK31	253 - PVM	3 Phase 3 Wire Combined Under/Over Voltage		1,950
Optional Accessories				
Extra charges for Aux supply / Time Delay				100
AC Voltage Relay With Adjustable Time Delay Input - 100 / 110 / 220 / 230 / 240 / 380 / 400 / 415 / 440V				
LJ21	252 - PVZ	Single Phase Under Voltage	Self Powered	1,300
	252 - PVH	Single Phase Over Voltage		1,300
	252 - PVX	3 Phase 4 Wire Under Voltage		1,300
	252 - PVS	3 Phase 4 Wire Over Voltage		1,300
	252 - PVJ	3 Phase 3 Wire Under Voltage		1,300
	252 - PVC	3 Phase 3 Wire Over Voltage		1,300
Optional Accessory				
Extra charges for Aux supply				100
Frequency Relay With Adjustable Time Delay Range - 40/60Hz 50/70Hz, 360/440Hz Input - 100 / 110 / 220 / 230 / 240 / 380 / 400 / 415 / 440V				
LF21	252 - PHU	Under Frequency	Self Powered	1,140
	252 - PHO	Over Frequency		1,140
LF31	253 - PHD	Combined Under/Over Frequency		1,950
Optional Accessory				
Extra charges for Aux supply				100
Combined Under / Over Voltage & Frequency Range - 40/60Hz 50/75Hz 360/440Hz Input - 120 / 240V				
LC61	256 - PHV	Single Phase Combined Under/Over Voltage and Frequency.	Self Powered	3,940
Phase Sequence & Phase Failure Input - 100 / 110 / 220 / 230 / 240 / 380 / 400 / 415 / 440V				
LP21	252 - PVR	3 Phase 3 Wire or 4 Wire	Self Powered	900
Thermistor Trip Relay Range : Trip 2500-3500 Ohm Reset :1500 -2300 Ohm.				
LT21	252 - PMT	Automatic Reset	AC : 110 / 120 / 220 / 230 / 240V	1,090
	252 - PMM	Manual Reset		1,090
Synchro Check Relay (Paralleling) Input - 100 / 110 / 220 / 230 / 240 / 380 / 400 / 415 / 440V				
LS61	256 - PLL	1 Generator 1 Bus or 2 Generator Systems.	Self Powered	2,110
	256 - PLD	1 Generator with 'DEAD BUS' facility		2,640

KMAT	Model	Description	Auxiliary Supply	LP (INR)
Phase Balance Relay Input - 100 / 110 / 220 / 230 / 240 / 380 / 400 / 415 / 440V				
LB21	252 - PSF	Phase loss and Unbalance	Self Powered	1,090
	252 - PSG	Phase loss Unbalance and Under Voltage.		1,430
Reverse Power (Current) Relay Input - 100 / 110 / 220 / 230 / 240 / 380 / 400 / 415 / 440V Input - 1/2/3/4/5/6/8/10A				
LR61	256 - PAS	Single Phase or 3 Phase 4 Wire.	Self Powered	2,280
	256 - PAT	3 Phase 3 Wire.		2,320
	256 - PAQ	Single Phase or 3 Phase 4 Wire with test push button.		3,860
	256 - PAR	3 Phase 3 Wire with test push button.		3,860
DC Voltage Relay DC Voltage -18 to 20 or 20 to 32Vdc				
LD21	252 - PDU	DC Under Voltage with external time delay	Self Powered	1,430
	252 - PDO	DC Over Voltage with external time delay		1,550
	253 - PDE	DC Under Voltage with external external differential		1,300
DC Milivolt Relay Input-50/60/75/100/150mV (Span- Min 10mV)				
LM21	252 - PBS	DC Milivolt Low Trip	AC : 120 / 240V	1,790
	252 - PBT	DC Milivolt High Trip		1,790
	Extra charges for DC Aux : 12 / 24 / 48 / 110V			100
Transducer Trip Relay Input - DC current - 1 / 5 / 10 / 20 / 4 - 20mA & DC voltage - 1 to 50V				
LX21	252 - PBA	Low Trip	AC : 120 / 240V	1,590
	252 - PBB	High Trip		1,590
LX31	253 - PBV	Combined High/Low		3,170
Extra charges for DC Aux : 12 / 24 / 48 / 110V				100
Motor Protection Relay Input - 100 / 110 / 220 / 230 / 240 / 380 / 400 / 415 / 440V				
LL31	253 - MPR	Motor Protection Relay (Phase Loss Reversal Unbalanced)	AC : 110 / 220 / 230 / 240 / 380 / 415V	1,710
Earth Fault Relay Input - 1A / 5A				
LE31	253 - EFR	Earth Fault Relay	AC : 230V	2,060

Battery Charger

Order Code	Model No	Input Voltage	Output Voltage	Power Range	LP (INR)
BC03-1D00000000000	1P Elite 3612A	115 V AC/ 230V AC	12 V DC	36 W	2,800
BC03-1F00000000000	1P Elite 7212A	115 V AC/ 230V AC	12 V DC	72 W	3,050
BC03-1G00000000000	1P Elite 7224A	115 V AC/ 230V AC	24 V DC	72 W	3,050
BC03-1A00000000000	1P Elite 12012A	115 V AC/ 230V AC	12 V DC	120 W	3,150
BC03-1B00000000000	1P Elite 12024A	115 V AC/ 230V AC	24 V DC	120 W	3,150
BC03-1E00000000000	1P Elite 12030A	115 V AC/ 230V AC	30 V DC	120 W	3,150



Power Supply

Order Code	Model No	Input Voltage	Output Voltage	Output Current	Power Range	LP (INR)
RISH FLEX - E SERIES						
Single Phase - Plastic Housing						
RF14-1N00000000000	1P Flex - e 1515A	115 V AC/ 230V AC	15 V DC	1.0 A	15 W	1,400
RF14-1M00000000000	1P Flex - e 1512A	115 V AC/ 230V AC	12 V DC	1.25 A	15 W	1,400
RF14-1P00000000000	1P Flex - e 1524A	115 V AC/ 230V AC	24 V DC	0.63 A	15W	1,400
RF14-1S00000000000	1P Flex - e 3012A	115 V AC/ 230V AC	12 V DC	3.0 A	30 W	1,550
RF14-1K00000000000	1P Flex - e 3024A	115 V AC/ 230V AC	24 V DC	1.5 A	30 W	1,550
RF14-1R00000000000	1P Flex - e 4512A	115 V AC/ 230V AC	12 V DC	3.75 A	45 W	1,700
RF14-1L00000000000	1P Flex - e 4524A	115 V AC/ 230V AC	24 V DC	1.75 A	45 W	1,700
RF14-1Q00000000000	1P Flex - e 6012A	115 V AC/ 230V AC	12 V DC	5.0A	60 W	1,775
RF14-1A00000000000	1P Flex - e 6024A	115 V AC/ 230V AC	24 V DC	2.5 A	60 W	1,775
Single Phase - Metal Housing						
RF14-1B00000000000	Rish Flex - e 9024A	115 V AC/ 230V AC	24 V DC	5 A	95 to 120 W	2,320
RF14-1C00000000000	Rish Flex - e 17024A	115 V AC/ 230V AC	24 V DC	7.5 A	95 to 180 W	2,450
Two Phase - Metal Housing						
RF14-2I00000000000	Rish Flex - e 9024B	230V AC / 400V AC	24 V DC	5 A	120 to 180 W	3,250
RF14-2J00000000000	Rish Flex - e 17024B	230V AC / 400V AC	24 V DC	7.5 A	120 to 180 W	3,400
RISH FLEX SERIES						
Single Phase - Metal Housing						
RF13-1T00000000000	Rish Flex 6005A	115 V AC/ 230V AC	5 V DC	5 A	35 W	2,150
RF13-1S00000000000	Rish Flex 6012A	115 V AC/ 230V AC	12 V DC	6 A	72 W	2,150
RF13-1A00000000000	Rish Flex 6024A	115 V AC/ 230V AC	24 V DC	3 A	72 W	2,150
RF13-1Y00000000000	Rish Flex 9012A	115 V AC/ 230V AC	12 V DC	10 A	New 120 W	3,105
RF13-1B00000000000	Rish Flex 9024A	115 V AC/ 230V AC	24 V DC	5 A	120 W	3,350
RF13-1200000000000	Rish Flex 15012A	115 V AC/ 230V AC	12 V DC	12.5 A	New 150 W	3,280
RF13-1300000000000	Rish Flex 15024A	115 V AC/ 230V AC	24 V DC	6.25 A	New 150 W	3,280
RF13-1400000000000	Rish Flex 15048A	115 V AC/ 230V AC	48 V DC	3.13 A	New 150 W	3,280
RF13-1R00000000000	Rish Flex 17012A	115 V AC/ 230V AC	12 V DC	14 A	180 W	3,450
RF13-1C00000000000	Rish Flex 17024A	115 V AC/ 230V AC	24 V DC	7.5 A	180 W	3,450
RF13-1F00000000000	Rish Flex 17048A	115 V AC/ 230V AC	48 V DC	3.75 A	180 W	4,000
RF13-1P00000000000	Rish Flex 28012A	115 V AC/ 230V AC	12 V DC	16 A	240 W	6,500
RF13-1Z00000000000	Rish Flex 24024A	115 V AC/ 230V AC	24 V DC	10 A	New 240 W	5,850
RF13-1D00000000000	Rish Flex 28024A	115 V AC/ 230V AC	24 V DC	14 A	336 W	6,500
RF13-1G00000000000	Rish Flex 28048A	115 V AC/ 230V AC	48 V DC	7 A	336 W	6,500
RF13-1I00000000000	Rish Flex 48024A	115 V AC/ 230V AC	24 V DC	20 A	New 480 W	7,200
RF13-1E00000000000	Rish Flex 50024A	115 V AC/ 230V AC	24 V DC	25 A	600 W	8,000
RF13-1H00000000000	Rish Flex 50048A	115 V AC/ 230V AC	48 V DC	12 A	600 W	8,000

Order Code	Model No	Input Voltage	Output Voltage	Output Current	Power Range	LP (INR)
Two Phase - Metal Housing						
RF13-2I00000000000	Rish Flex 9024B	230V/ 400V/ 500 V AC	24 V DC	5 A	120 W	4,100
RF13-2J00000000000	Rish Flex 17024B	230V/ 400V/ 500 V AC	24 V DC	7.5 A	180 W	4,200
RF13-2K00000000000	Rish Flex 28024B	230V/ 400V/ 500 V AC	24 V DC	14 A	336 W	7,000
Three Phase - Metal Housing						
RF13-3L00000000000	Rish Flex 50024B	400 – 500 V AC	24 V DC	25 A	600 W	8,900
RF13-3M00000000000	Rish PST 2430B	400 – 480 V AC	24 V DC	30 A	720 W	19,040
RF13-3N00000000000	Rish PST 2440B	400 – 480 V AC	24 V DC	40 A	960 W	22,900
Redundancy Module						
RF13-00M00000000000	Rish MR220	10 – 60 V DC	10 – 60 V DC	0 – 25 A (max)	----	1,950



Terms and conditions

- This issue of Price List supersedes all previous Price Lists
- All Prices are in INR
- The prices are subject to change without prior notice
- List Prices mentioned are exclusive of all taxes & duties
- Prices charged will be as prevailing on the date of dispatch
- Minimum order value criterion should be observed while ordering
- The company reserves the right to supply goods at its discretion
- For any non-standard requirement, please contact nearest sales office regarding technical feasibility, price & delivery

Warranty

- All the products listed in the Price List carry a warranty of 18 months against manufacturing defects (unless otherwise specified) from the date of purchase or 12 months from the date of commissioning, whichever is earlier

Note

- To facilitate the ordering kindly make use of product configurator
- For Energy Management Solutions (EMS) enquiries, please contact nearest sales office
- Kindly refer respective datasheets for detailed technical specifications. Technical specs given in this price list are in abbreviated form only for easy understanding. Selection of products must be done from the datasheets.
- Since the product approbations mentioned in the price list are on generic header level, kindly contact to our nearest sales office for productwise approbations
- For any enquiry regarding Energy Measurement Software and Solar Inverters, kindly contact our sales office.



Product updgradation is a continuous process. Hence data in this price list are subject to change without prior notice. For the latest information, please get in touch with our sales office.



Measure



Control



Record



Analyse

RISHABH INSTRUMENTS PVT. LTD.

+91 253 2202028/99 | marketing@rishabh.co.in | www.rishabh.co.in