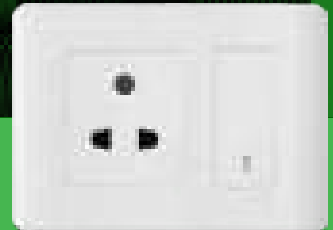
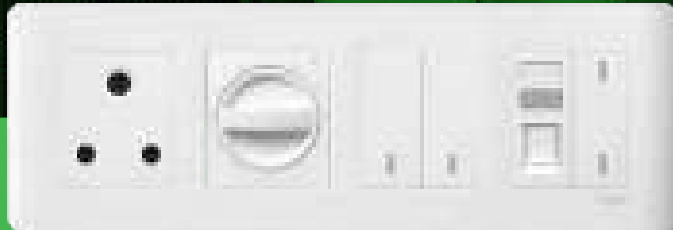


Life Is On

Schneider
Electric



ZENcelo
be in-standing

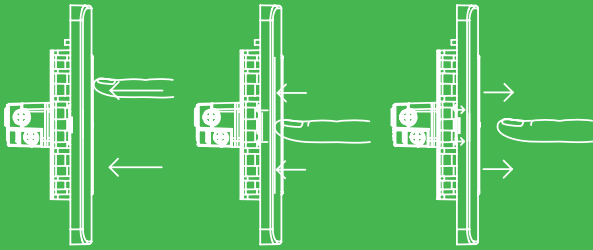


The Revolutionary Full-Flat Switch

schneider-electric.co.in



Colour options that are anything but flat



Enabled by a New Physics

The patented "impress" (iso-motionpress) mechanism ensures the switch dolly remains stationary when it is "on" or "off", and at the same time occupying a much smaller footprint.

Enabled by impress. mechanism, ZENcelo makes the future flatter than you ever imagined

Style meets Sophistication





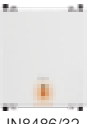

Embrace Quality

The aesthetically pleasing ZENcelo Full-Flat switch has been crafted for the majority who use electro-mechanical switches. With ZENcelo, luxury is no longer defined by price but by wisdom and style.

Best in Class Features

- Made of corrosion resistant, heat resistant and impact resistant polycarbonate
- Data socket with patented integrated shutter
- Electrical socket with reinforced-nylon protective shutter
- Switches are electric arc encapsulated
- Philips head screw to fit both flat and cross head screwdrivers
- Switches tested to 80,000 times. Sockets tested to 15,000 cycles. Durable to last more than a decade
- IEC, BS, SS, MS, GB, CCC and/or IS compliant
- All RoHS compliant

ZENcelo India

Description	Reference for WH	Reference for BZ
6A Switches		
 6A 1 Way Switch	IN8401	IN8401(BZ)
 6A 1 Way Switch (2M Size)	IN8421	IN8421(BZ)
6A 2 Way Switch	IN8402	IN8402(BZ)
6A 1 Way Switch With Neon	IN8481	IN8481(BZ)
16A Switches		
 16Ax~20A 1 Way Switch	IN8401/16	IN8401/16(BZ)
 16Ax~20A 1 Way Switch (2M Size)	IN8421/16	IN8421/16(BZ)
16Ax~20A 1 Way Switch With Neon	IN8481/16	IN8481/16(BZ)
16Ax~20A 1 Way Switch With Neon (2M Size)	IN8482/16	IN8482/16(BZ)
16Ax~20A 2 Way Switch	IN8402/16	IN8402/16(BZ)
16Ax~20A 2 Way Switch (2M Size)	IN8422/16	IN8422/16(BZ)
16AX 20A 1 Way 2G Switch in One Module	IN8444/16	IN8444/16(BZ)
Intermediate Switch		
 10AX Intermediate Switch	IN8430/IM	IN8430/IM(BZ)
Double Pole Switches		
 20A DP Switch With Neon (2M Size)	IN8486/20	IN8486/20(BZ)
 32A DP Switch With Neon (2M Size)	IN8486/32	IN8486/32(BZ)
Bell Switches		
 6A Door Bell	IN8405	IN8405(BZ)
 6A Door Bell (2M Size)	IN8425	IN8425(BZ)
6A Door Bell With Neon	IN8485	IN8485(BZ)
6A Door Bell With Neon (2M Size)	IN8486	IN8486(BZ)
Motor Starter Switch		
 25A Motor Starter Switch (2M Size)	IN8425MS	IN8425MS(BZ)
USB Chargers New		
 1 Gang USB Charger - 2.1A (1M)	IN8431USB_WE	IN8431USB_BZ
 2 Gang USB Charger - 2.1A (2M)	IN8432USB_WE	IN8432USB_BZ
Sockets		
 2~3 Pin Universal Socket With Shutter	IN8426U	IN8426U(BZ)
 16A/6A 3 Pin Socket With Shutter	IN8426/16	IN8426/16(BZ)
13A Flat Pin Socket With Shutter	IN84213	IN84213(BZ)
International Socket With Shutter	IN84213IS	IN84213IS(BZ)
Universal 2 Pin Socket With Shutter	IN84226U	IN84226U(BZ)
20A 3 Pin Socket With Shutter	IN84220	IN84220(BZ)
25A 3 Pin Socket With Shutter	IN84225	IN84225(BZ)
Telecommunication		
 RJ11 1G Tel Outlet With Shutter	IN8431RJS4	IN8431RJS4(BZ)
 Data Outlet (RJ45) Cat 6 (Shuttered)	IN8431RJ6	IN8431RJ6(BZ)
Data Outlet Wall Plate (For RJ45 Key Stone Jack)	IN8431RJC	IN8431RJC(BZ)
TV Socket	IN8431TV	IN8431TV(BZ)



IN8404D

IN84SFR

Description	Reference for WH	Reference for BZ
Dimmer/Fan Regulator		
400W Dimmer	IN8404D	IN8404D(BZ)
Fan Control (5 Speeds)	IN84SFR	IN84SFR(BZ)
Blank Off Cover		
1 Module Size Blank Off Cover	IN8430X	IN8430X(BZ)
Others		
Foot Lamp with White LED (2M Size)	IN8490FLW	
Foot Lamp with Yellow LED (2M Size)	IN8490FLY	
Cord Outlet (Connection Unit)	IN8445CO	IN8445CO(BZ)
Hotel Series		
DND Panel	INH8451	INH8451(BZ)
DND Switch	INH8452	INH8452(BZ)
DND Switch, 2 Module	INH8453	INH8453(BZ)
MMR Panel	INH8454	INH8454(BZ)
MMR Switch	INH8455	INH8455(BZ)



INH8451

INH8454

Description	Reference for WH	Reference for BZ
Cover Plates*		
1 Module Grid and Cover Plate	IN8401C	IN8401C(BZ)
2 Module Grid and Cover Plate	IN8402C	IN8402C(BZ)
3 Module Grid and Cover Plate	IN8403C	IN8403C(BZ)
4 Module Grid and Cover Plate	IN8404C	IN8404C(BZ)
6 Module Grid and Cover Plate	IN8406C	IN8406C(BZ)
8 Module Grid and Cover Plate - Square	IN8408SC	IN8408SC(BZ)
8 Module Grid and Cover Plate - Horizontal	IN8408HC	IN8408HC(BZ)
9 Module Grid and Cover Plate	IN8409C	IN8409C(BZ)
12 Module Grid and Cover Plate	IN84012C	IN84012C(BZ)
18 Module Grid and Cover Plate	IN84018C	IN84018C(BZ)



IN8404C



IN84012C(SA)

Description	Reference for SZ	Reference for SA
1 Module Grid and Cover Plate	IN8401C(SZ)	IN8401C(SA)
2 Module Grid and Cover Plate	IN8402C(SZ)	IN8402C(SA)
3 Module Grid and Cover Plate	IN8403C(SZ)	IN8403C(SA)
4 Module Grid and Cover Plate	IN8404C(SZ)	IN8404C(SA)
6 Module Grid and Cover Plate	IN8406C(SZ)	IN8406C(SA)
8 Module Grid and Cover Plate - Square	IN8408HC(SZ)	IN8408HC(SA)
8 Module Grid and Cover Plate - Horizontal	IN8408SC(SZ)	IN8408SC(SA)
9 Module Grid and Cover Plate	IN8409C(SZ)	IN8409C(SA)
12 Module Grid and Cover Plate	IN84012C(SZ)	IN84012C(SA)
18 Module Grid and Cover Plate	IN84018C(SZ)	IN84018C(SA)



IN8404C(SZ)



IN8404C(BZ)

*Cover plates also available in Satin Silver (SA) and Silver Bronze (SZ)

Metal Boxes	
Description	Reference
Metal Boxes for Indian Format Ranges (Livia, Opale & ZENcelo India)	
0.8 mm thickness	
Metal Box 1 & 2 modules	ME0102
Metal Box 3 modules	ME0103
Metal Box 4 modules	ME0104
1 mm thickness	
Metal Box 1 & 2 modules	MR1102
Metal Box 3 modules	MR1103
Metal Box 4 modules	MR1104
Metal Box 6 modules	MR1106
Metal Box 8 modules - Horizontal	MR1108
Metal Box 8 modules - Square	MR1109
Metal Box 12 module	MR1112
Metal Box 18 modules	MR1118

MR1102

MR1103

MR1104

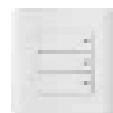
MR1106

ZENcelo BS

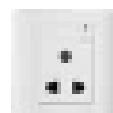
Description	Reference for White	Reference For Silver Bronze
Switches		
16AX/20A 1 Gang 1 Way switch with Ondicator	E8431/1-OS	E8431/1>SZ-OS
16AX/20A 2 Gang 1 Way switch with Ondicator	E8432/1-OS	E8432/1>SZ-OS
16AX/20A 3 Gang 1 Way switch with Ondicator	E8433/1-OS	E8433/1>SZ-OS
16AX/20A 4 Gang 1 Way switch with Ondicator	E8434/1-OS	E8434/1>SZ-OS
16AX/20A 1 Gang 2 Way switch	E8431/2-OS	E8431/2>SZ-OS
16AX/20A 2 Gang 2 Way switch	E8432/2-OS	E8432/2>SZ-OS
16AX/20A 3 Gang 2 Way switch	E8433/2-OS	E8433/2>SZ-OS
16AX 1 Gang Intermediate Switch	E8431/I-OS	E8431/I>SZ-OS
Double Pole Switches		
20A 1 Gang Double Pole switch with Neon	E8431D20-OS	E8431D20>SZ-OS
32A 1 Gang Double Pole switch with Neon	E8431D32-OS	E8431D32>SZ-OS
Bell Push		
10A Full-Flat Bell Switch	E8431BP1-OS	E8431BP1>SZ-OS
Sockets		
5A 1 Gang 3 Round Pin Switched Socket with Shutter and Ondicator	E8415/5-OS	E8415/5>SZ-OS
5A 1 Gang 3 Round Pin Switched Socket with Neon and Shutter	E8415/5N-OS	E8415/5N>SZ-OS
15A 1 Gang 3 Round Pin Switched Socket with Shutter and Ondicator	E8415/15-OS	E8415/15>SZ-OS
15A 1 Gang 3 Round Pin Switched Socket with Shutter and Neon	E8415/15N-OS	E8415/15N>SZ-OS
16A 1 Gang International Socket with Shutter	E84426/16IS-OS	E84426/16IS>SZ-OS
13A 1 Gang Switched Socket with Ondicator	E8415-OS	E8415>SZ-OS
13A 1 Gang Switched Socket with Neon	E8415N-OS	E8415N>SZ-OS
10/16A Switched Socket Outlet - Shuttered	E8415_16_10_WE	E8415_16_10_SZ
10A 2-3 pin Switched Socket Outlet - Shuttered	E8415_10_WE	E8415_10_SZ
Fan Regulators & Dimmers		
350VA 50Hz 1 Gang Full-Flat Universal Dimmer with LED	E8431EPD4-OS	E8431EPD4>SZ-OS
Accessories		
1 Gang TV Socket Master	E8431TVM-OS	E8431TVM>SZ-OS
1 Gang Telephone Socket on Shuttered Wallplate	E8431RJS4-OS	E8431RJS4>SZ-OS
2 Gang Telephone Socket on Shuttered Wallplate	E8432RJS4-OS	E8432RJS4>SZ-OS
1 Gang Data Outlet Category 5E with Integrated Shutter	E8431RJ/5-OS	E8431RJ/5>SZ-OS
1 Gang Data Outlet Category 6 with Integrated Shutter	E8431RJ/6-OS	E8431RJ/6>SZ-OS
1 Gang Data Outlet Category 5E on Shuttered Wallplate	E8431RJS/5-OS	E8431RJS/5>SZ-OS
1 Gang Data Outlet Category 6 on Shuttered Wallplate	E8431RJS/6-OS	E8431RJS/6>SZ-OS
2 Gang Data Outlet Category 5E with Integrated Shutter	E8432RJ/5-OS	E8432RJ/5>SZ-OS
2 Gang Data Outlet Category 6 with Integrated Shutter	E8432RJ/6-OS	E8432RJ/6>SZ-OS
2 Gang Data Outlet Category 5E on Shuttered Wallplate	E8432RJS/5-OS	E8432RJS/5>SZ-OS
2 Gang Data Outlet Category 6 on Shuttered Wallplate	E8432RJS/6-OS	E8432RJS/6>SZ-OS
2 Gang Telephone + Data Outlet Category 5E with Integrated Shutter	E8432TDRJ/5-OS	E8432TDRJ/5>SZ-OS
2 Gang Telephone + Data Outlet Category 5E on Shuttered Wallplate	E8432TDRJS/5-OS	E8432TDRJS/5>SZ-OS
2 Gang Telephone + Data Outlet Category 6 on Shuttered Wallplate	E8432TDRJS/6-OS	E8432TDRJS/6>SZ-OS
TV + Cat 6 shutter outlet	E8432TVRJ6_WE_G1	E8432TVRJ6_SZ_G1
1 Gang Wallplate without Modular Jack	E8431RJ-OS	E8431RJ>SZ-OS
1 Gang Shuttered Wallplate without Modular Jack	E8431RJS-OS	E8431RJS>SZ-OS
2 Gang Wallplate without Modular Jack	E8432RJ-OS	E8432RJ>SZ-OS
2 Gang Shuttered Wallplate without Modular Jack	E8432RJS-OS	E8432RJS>SZ-OS
25A Connection Unit	E8431TB-OS	E8431TB>SZ-OS
Blank off unit (1M)	E8430X-OS	E8430X>SZ-OS



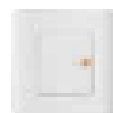
E8432/1>SZ-OS



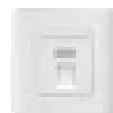
E8433/1-OS



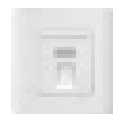
E8415-10_WE



E8431D20-OS



E8431RJS4_OS



E8431RJS-5_OS



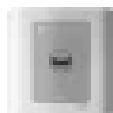
E8432RJS-5_SZ-OS



E8432TDRJS-5_SZ-OS



E8431USB_WE E8431USB_SZ



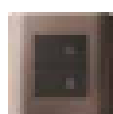
E8431USB_SA

Description	Reference For White	Reference For Silver Bronze	Reference For Satin Silver
USB Chargers			

1 Gang 2.1A USB Charger	E8431USB_WE	E8431USB_SZ	E8431USB_SA
-------------------------	-------------	-------------	-------------



E8431EKT-OS



E8432DMS>SZ-OS



E84T727H-OS



E84T727V>SZ-OS

Description	Reference for White	Reference For Silver Bronze
Hotel Series		
Illuminated "Do Not Disturb" & "Please Clean Up" Symbols	E8432DM-OS	E8432DM>SZ-OS
Illuminated "Do not Disturb" Symbol	E8431D-OS	E8431D>SZ-OS
1 Gang Full-Flat Switch with Illuminated "Do not Disturb" Symbol	E8431DS-OS	E8431DS>SZ-OS
2 Gang Full-Flat Switch with Illuminated "Do not Disturb" & "Please Clean Up" Symbols	E8432DMS-OS	E8432DMS>SZ-OS
1 Gang Full-Flat Bell Switch with Illuminated "Do Not Disturb" Symbol	E8431BPD-OS	E8431BPD>SZ-OS
1 Gang Full-Flat Bell Switch with Illuminated "Do Not Disturb" & "Please Clean Up" Symbols	E8431BPDM-OS	E8431BPDM>SZ-OS
Electronic Key Card Time Delay Switch	E8431EKT-OS	E8431EKT>SZ-OS
Universal Shaver Unit, Vertical	E84T727V-OS	E84T727V>SZ-OS
Universal Shaver Unit, Horizontal	E84T727H-OS	E84T727H>SZ-OS

Description	Reference
1 mm thickness	
2 Gang GI Metal Boxes to accommodate up to 2 Units	GM1102
3 Gang GI Metal Boxes to accommodate up to 3 Units	GM1103
4 Gang GI Metal Boxes to accommodate up to 4 Units	GM1104